

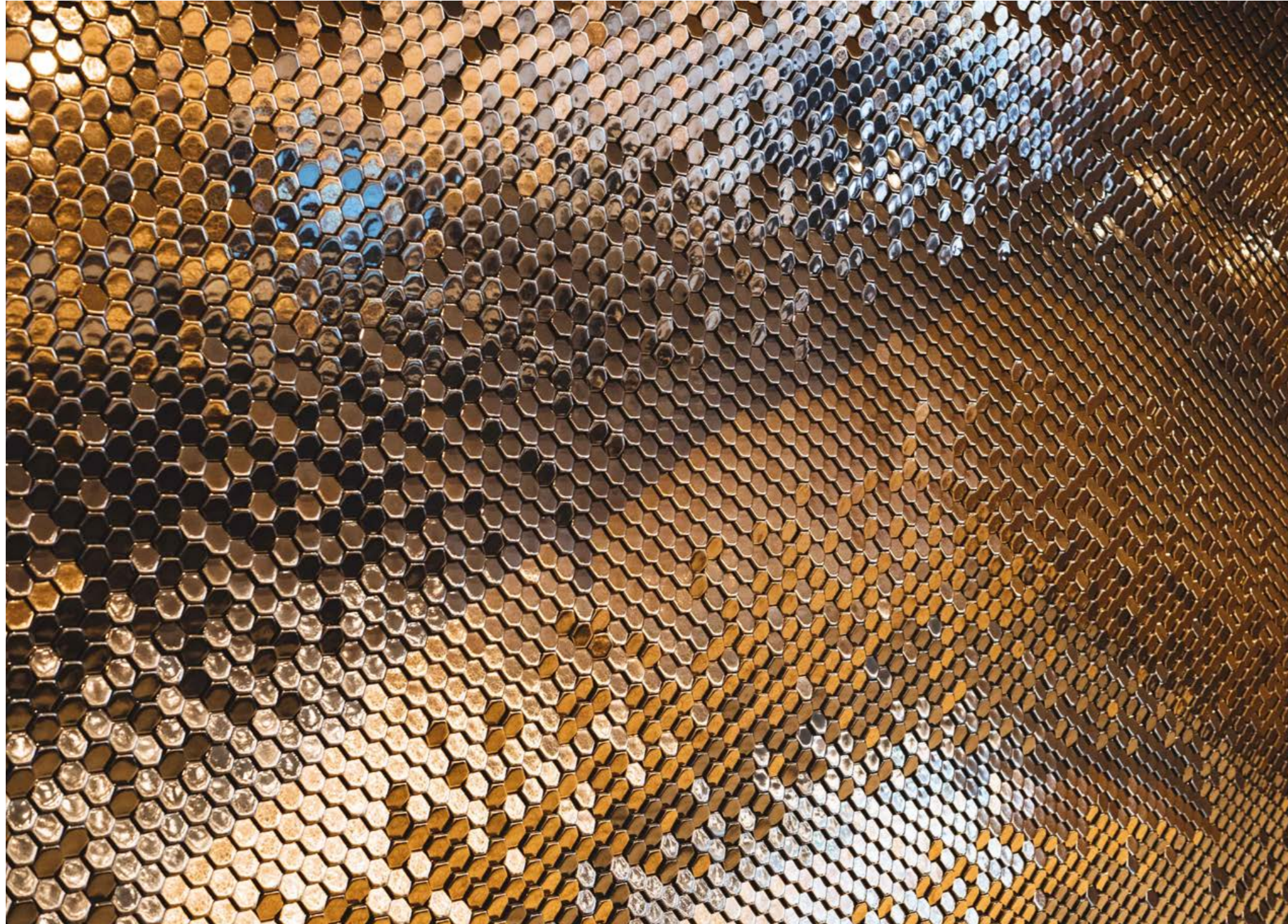
# Giles Miller Studio Surface Portfolio

Sensory Artistry

Certified



Corporation



Our artistic purpose is to benefit the human experience.

Neuroscience has proven art's ability to promote wellbeing. It validates our purpose.

Art communicates with and unites our senses. It has the power to make us feel pleasure, awe, comfort, serenity, and excitement.

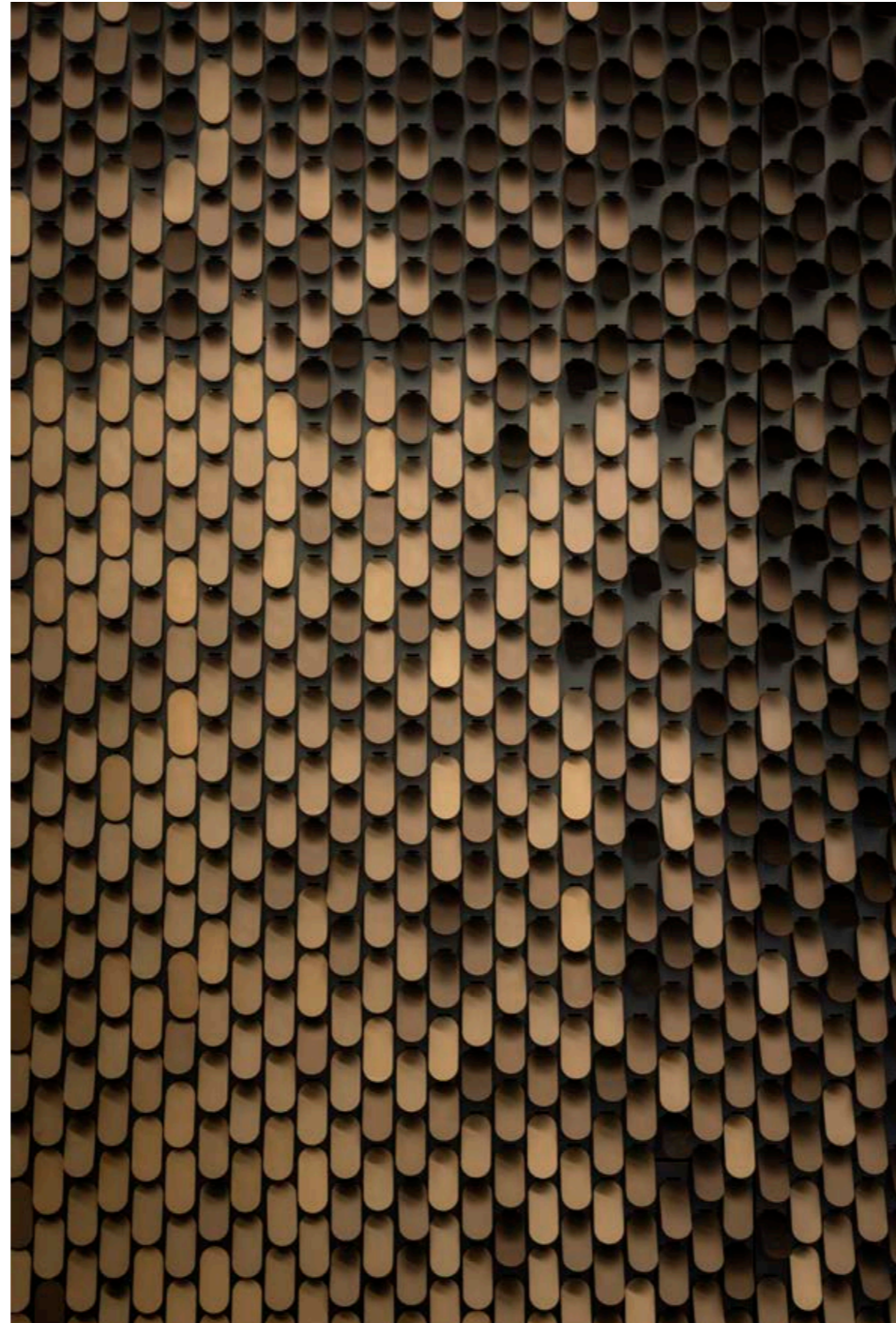
It's a power we study, channel, and perpetuate.

We call it sensory artistry.

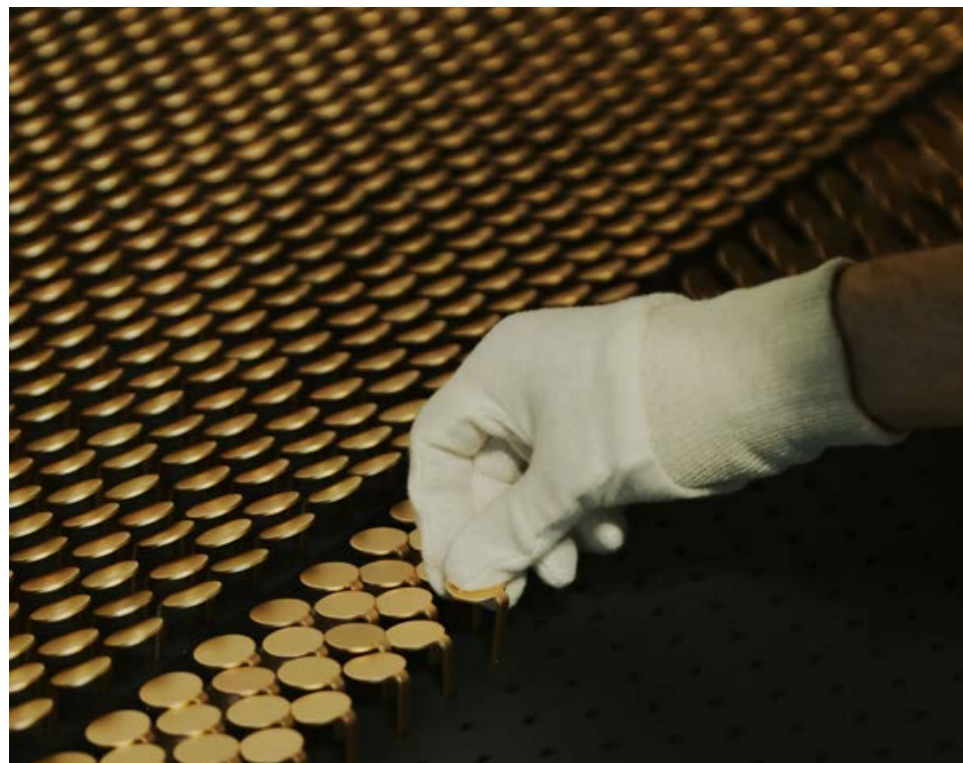


Giles Miller Studio creates dimensional and innovative surface murals. The textures, finishes and compositions in these bespoke pieces captivate and communicate with the senses in a subtle yet profound way.

Our process is that of a composer, combining materials with light to create elegant and original artworks. Each piece features unique textural content, meticulously tailored to suit the needs and context of the project.







“All the artwork installed looks fantastic. Often when you commission a piece of such scale, there is an element of risk and you are never sure how it will turn out, but the process and execution has been outstanding.”

*Nick Jordan (Director, Studio Jordan)*



# L'Envol

Paris, France - 2025

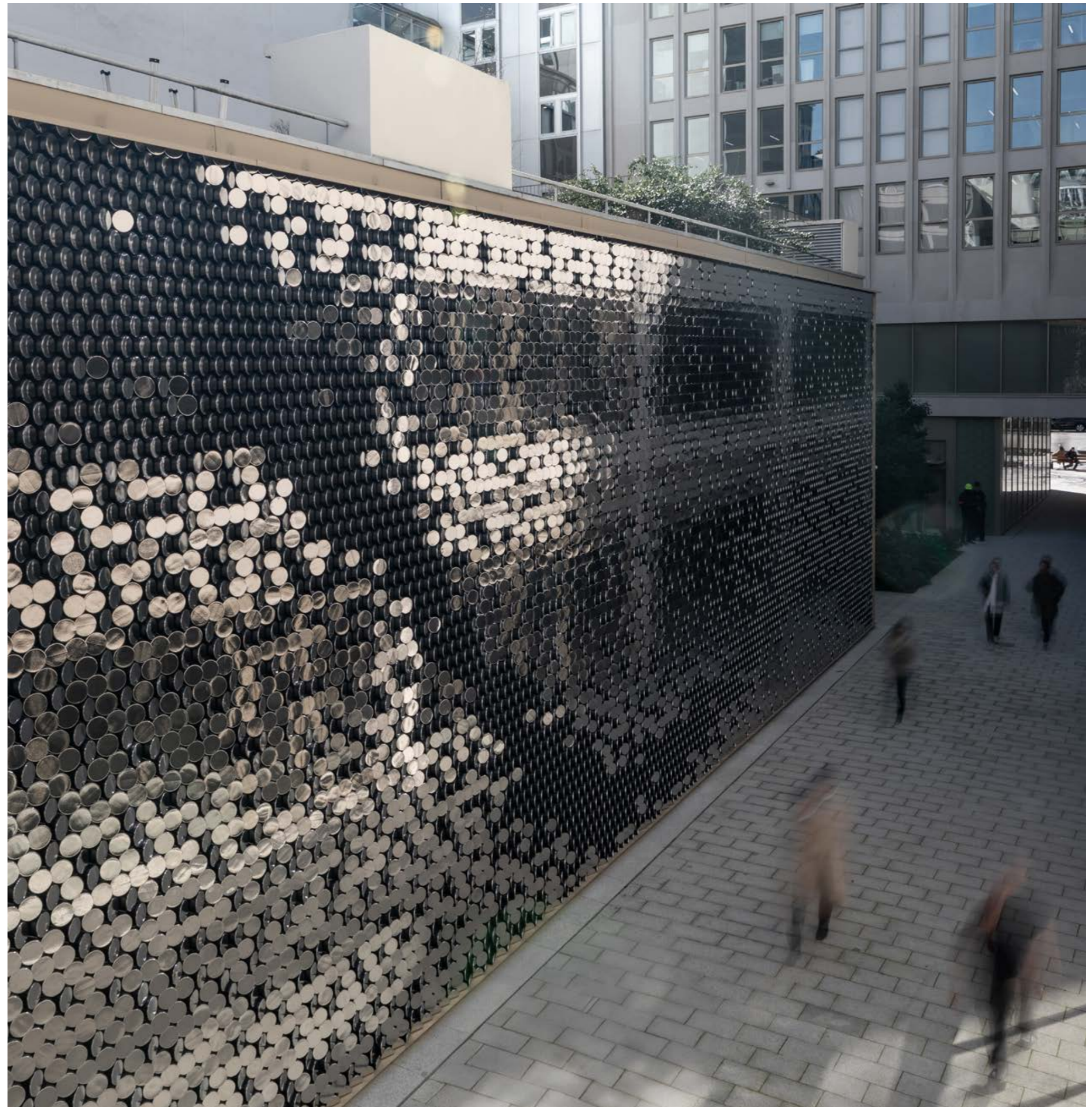
*A break of pace*

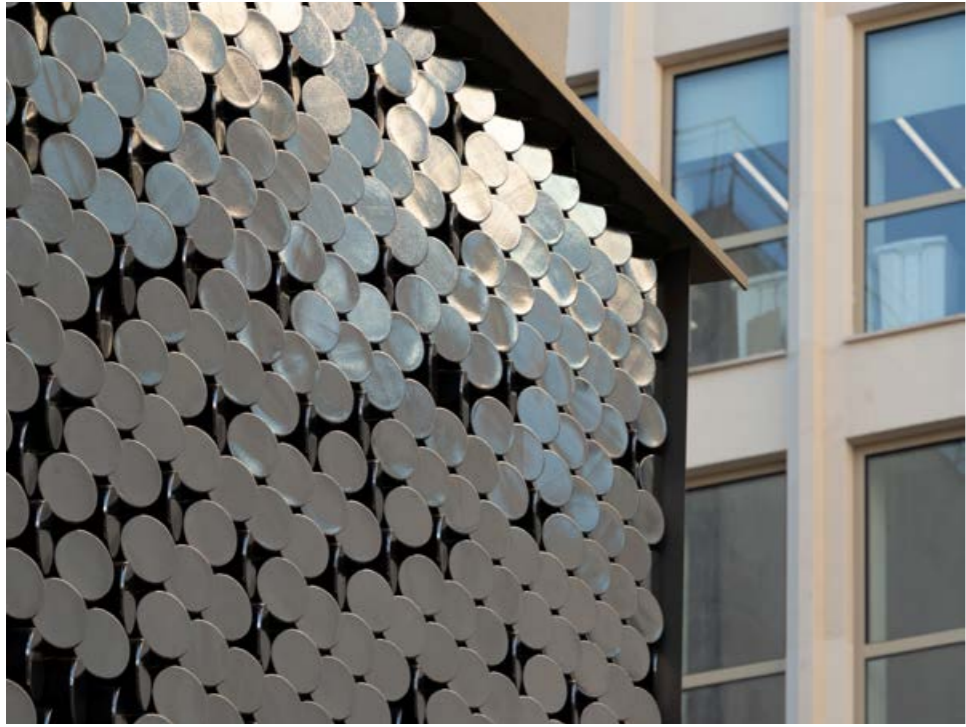
A large-scale mural on Paris' Champs Elysees provides sensory respite from the urban overload.

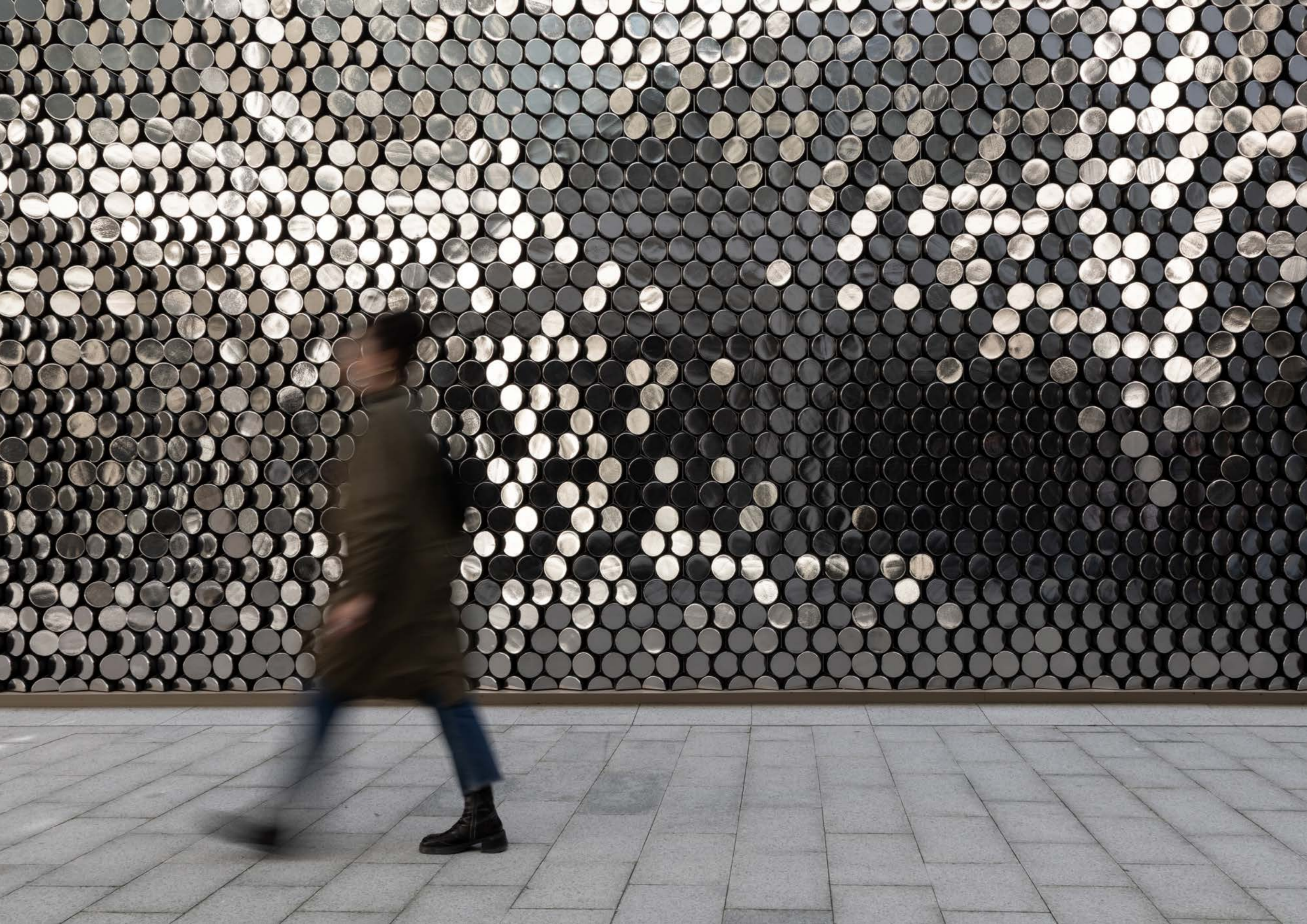
With its face of flowing softness, it instils a sense of release.

Its fractal patterning invites light to dance across its surface, which boosts mood.

And its reflective glazed ceramic materiality allows people to see themselves in a new way, sparking self-awareness that heightens mindfulness.









## Berkeley Square House

London, United Kingdom - 2024

*Harmony and balance in the city's discord*

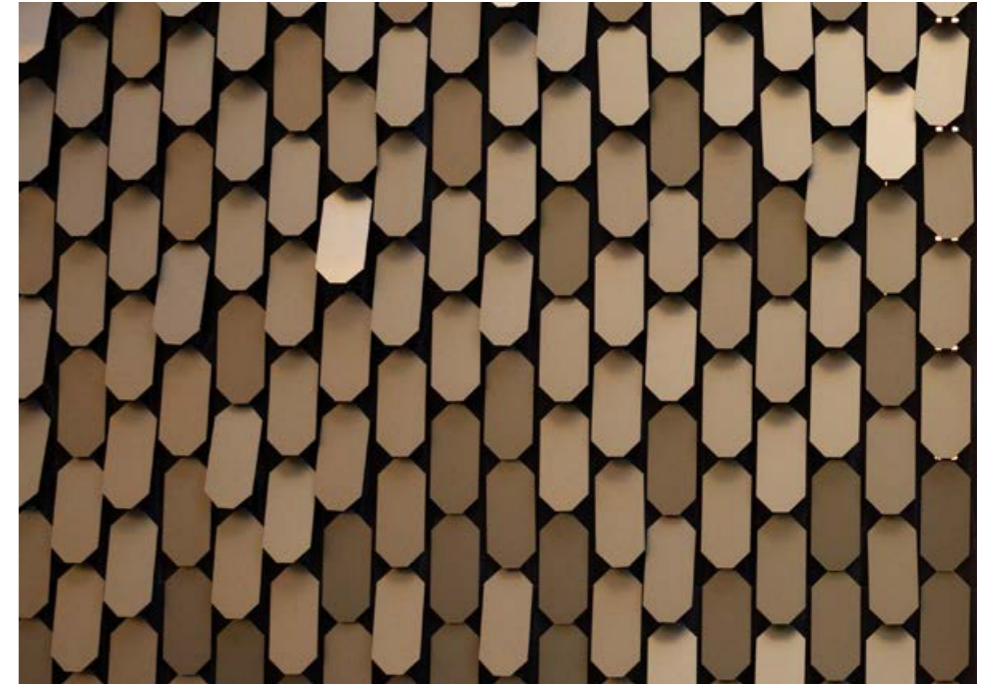
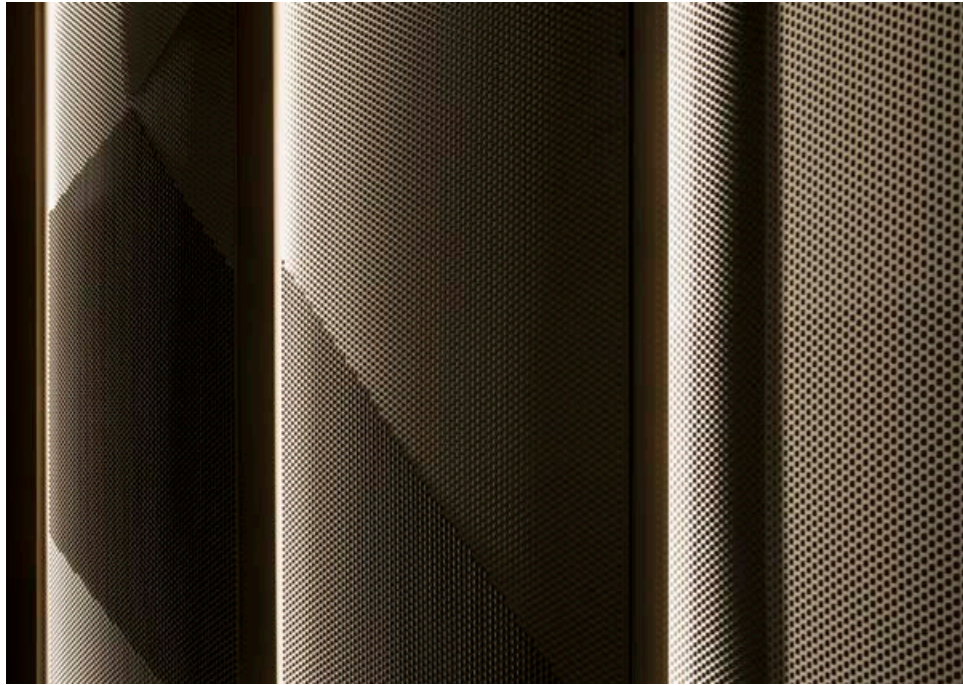
Two surface installations create sanctuary in London's frenetic centre.

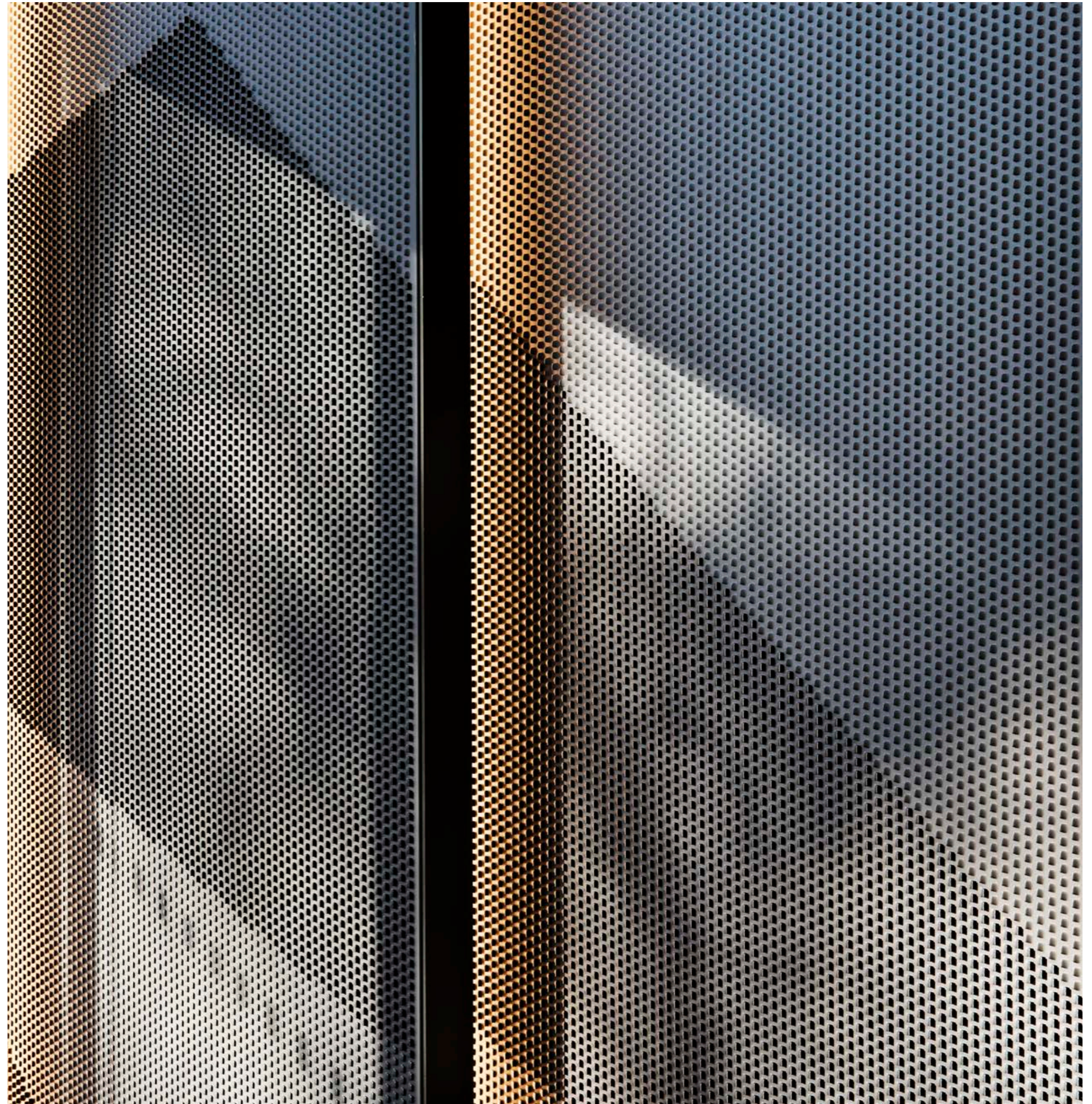
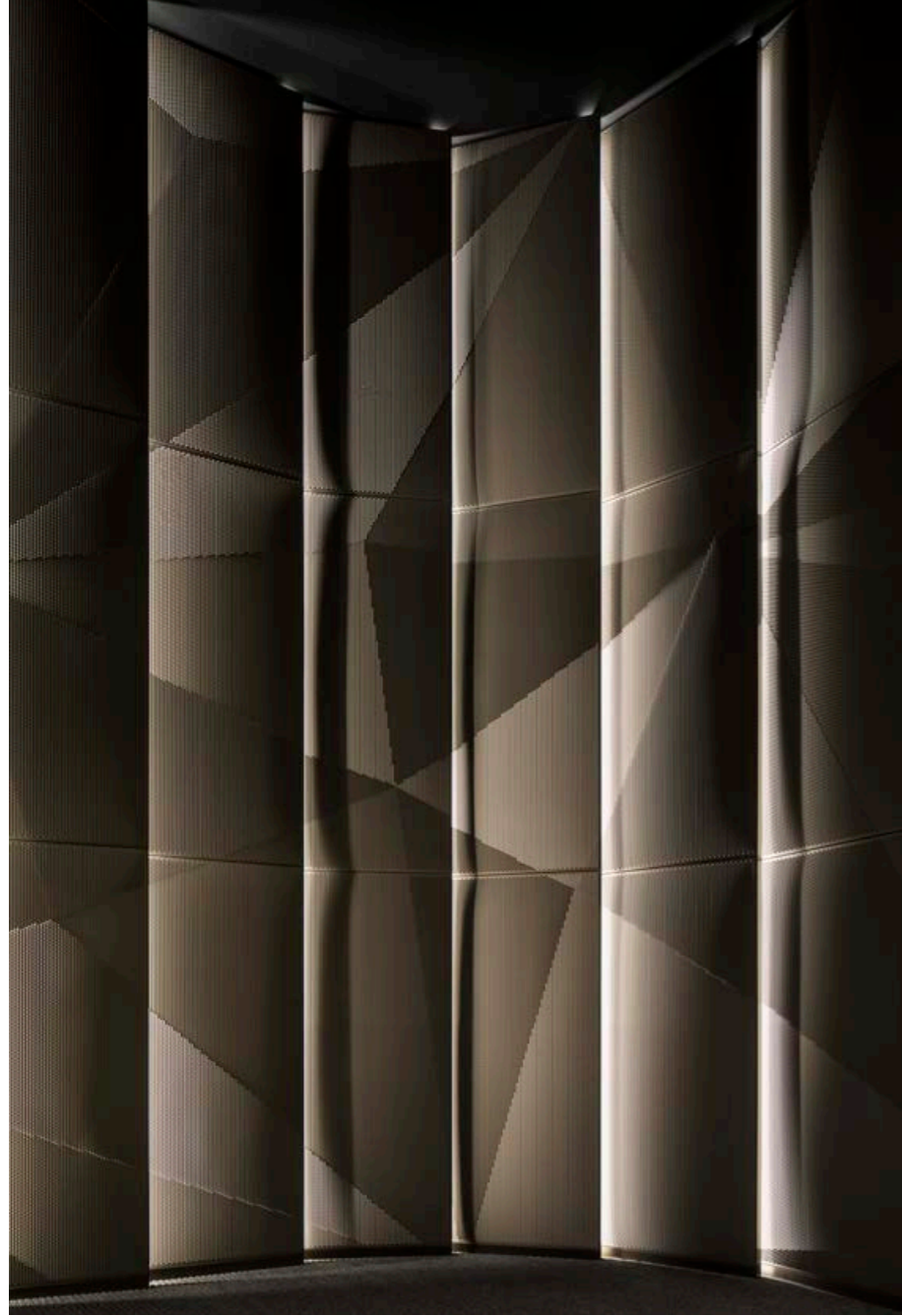
The height of both pieces elicits a feeling of liberation.

Vast curves feed the human mind's need for organic forms and gently guide people into the building.

Rhythmic patterns bring symmetry that inspires a sense of grounding comfort and calm.

And the constant movement of reflected sunlight stirs an enlivening, uplifting energy.





# Camley Street

London, United Kingdom - 2022

## *Cognitive restoration*

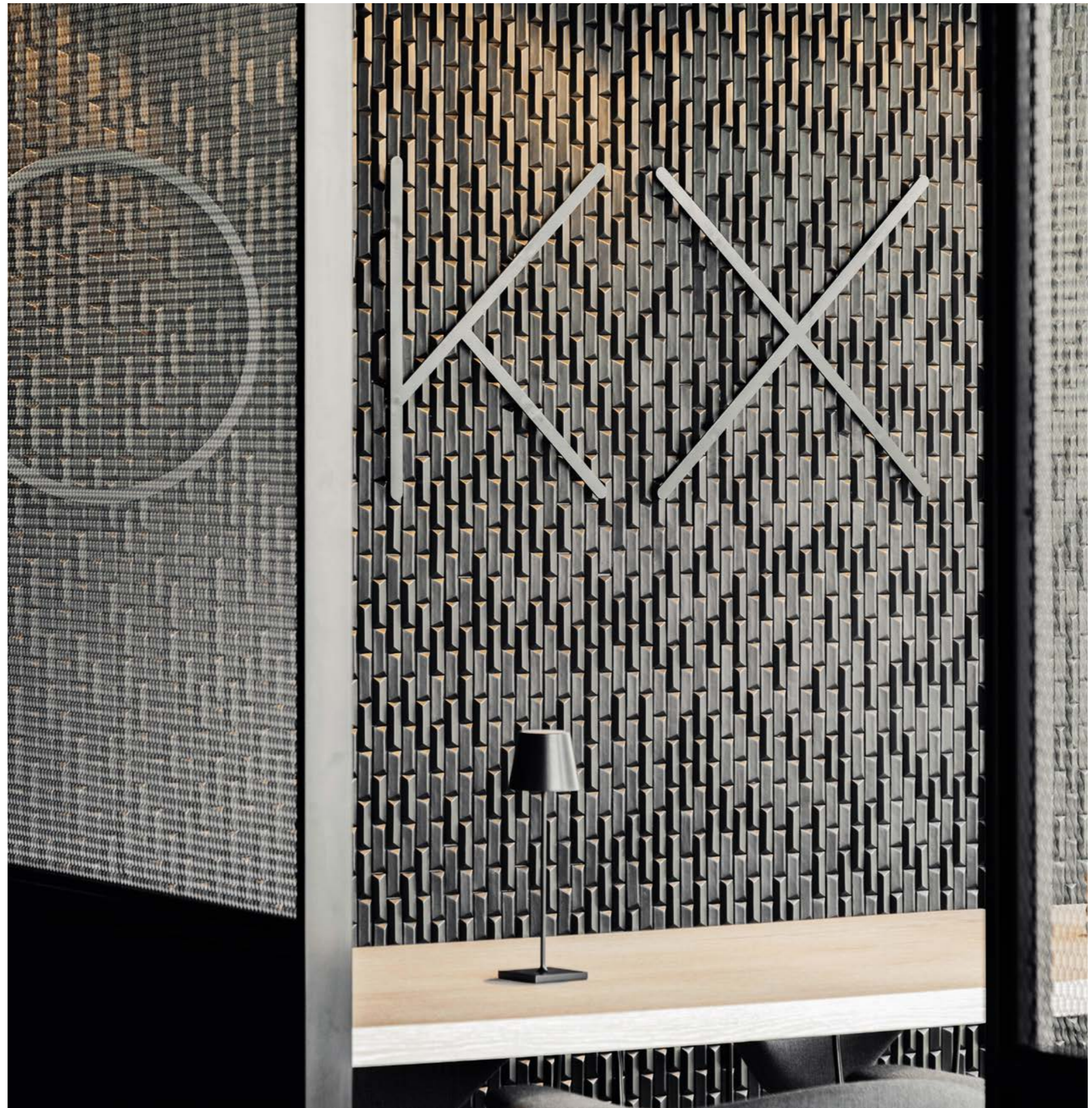
Black colouration embraces the history of the building this piece adorns in London's Victorian coal store.

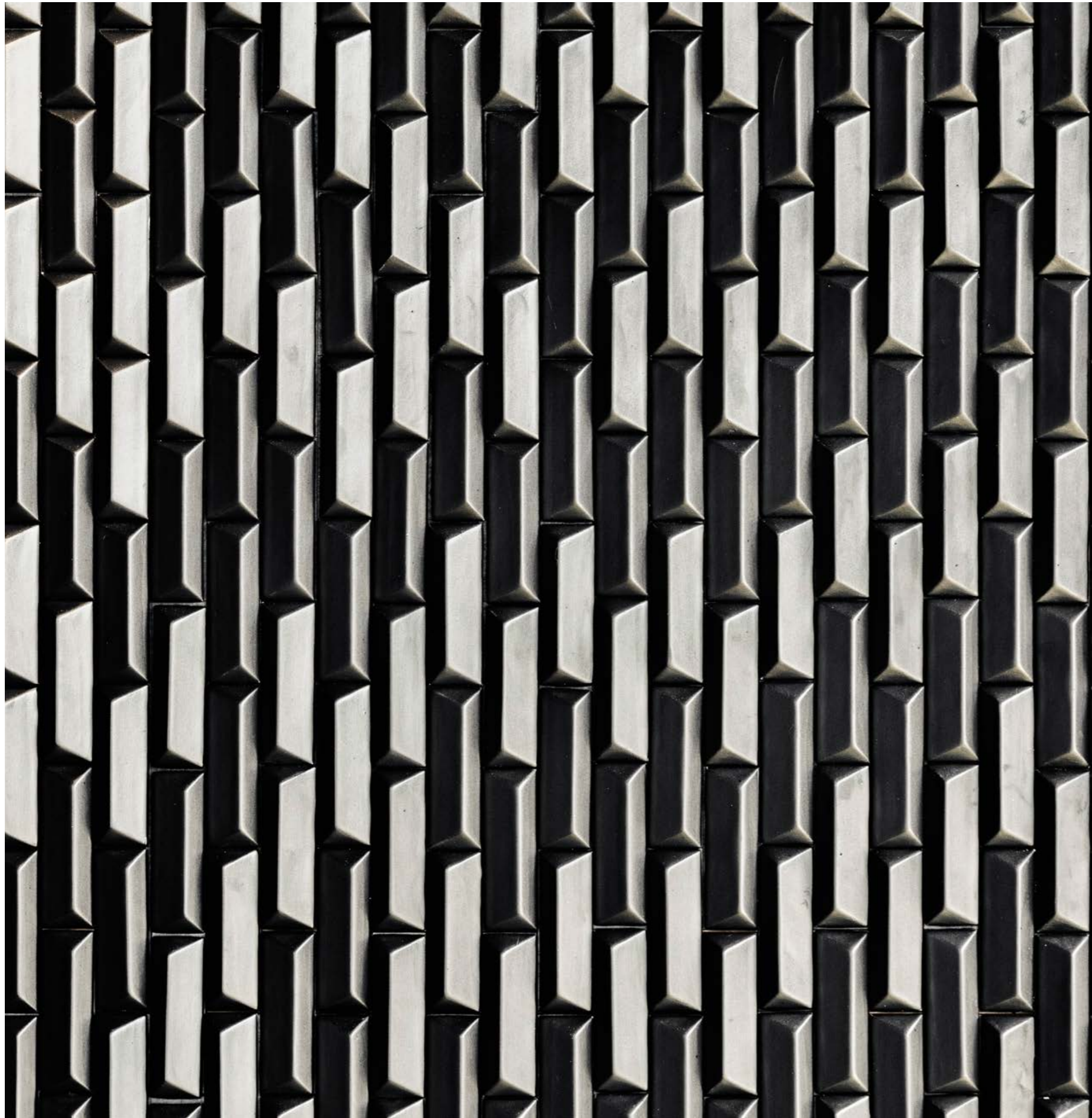
People are reflected in the deep black tiles, bringing colour flashes that form new perspectives of the artwork's effect.

A hidden door is an unexpected shift in expected solidity.

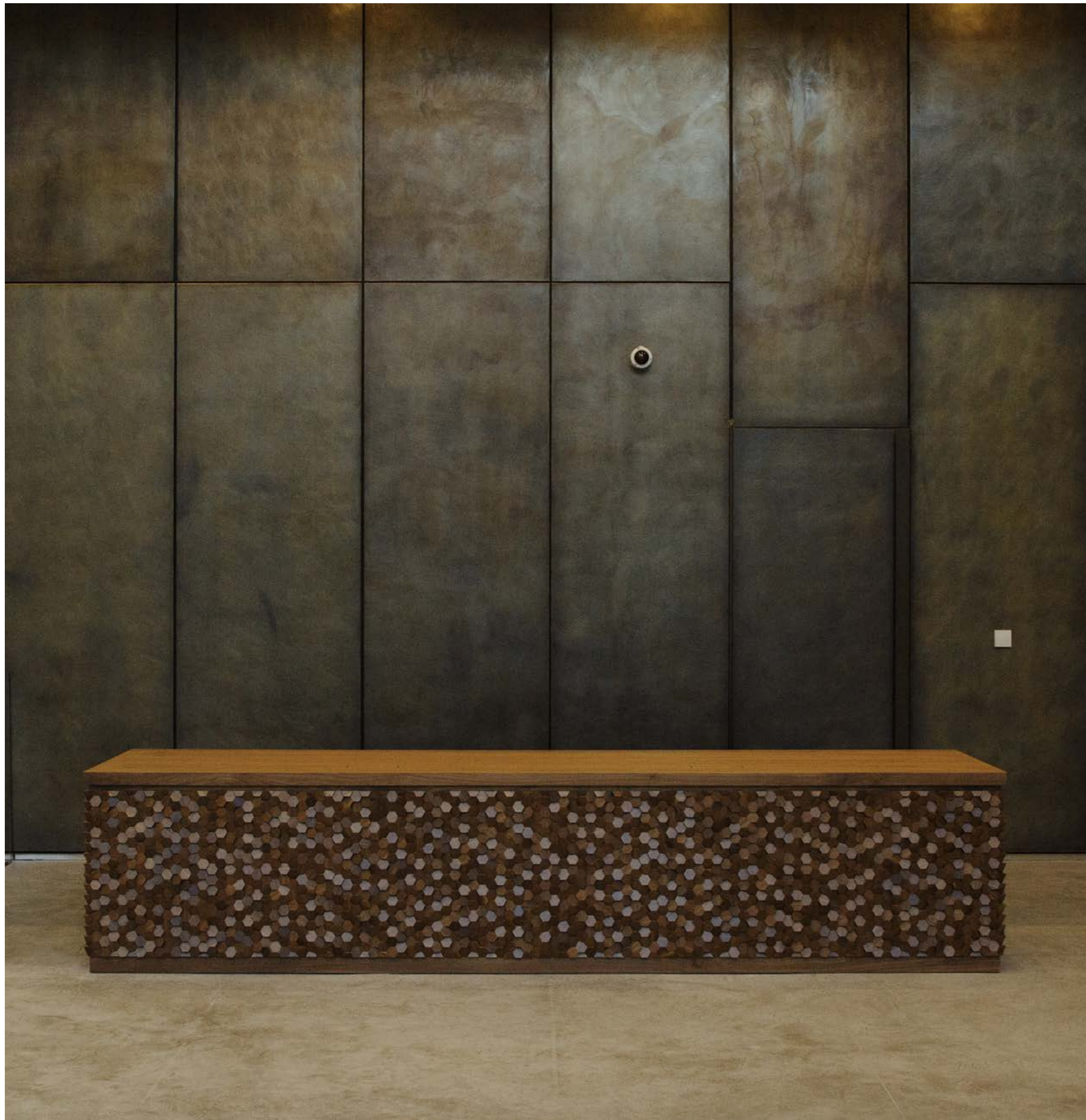
The sleek tactility of linear and angled faces invites touch.

And the digital effect of the randomised pattern is reminiscent of geology, eliciting a positive response as it grounds the mind.









## The Stage

London, United Kingdom - 2020

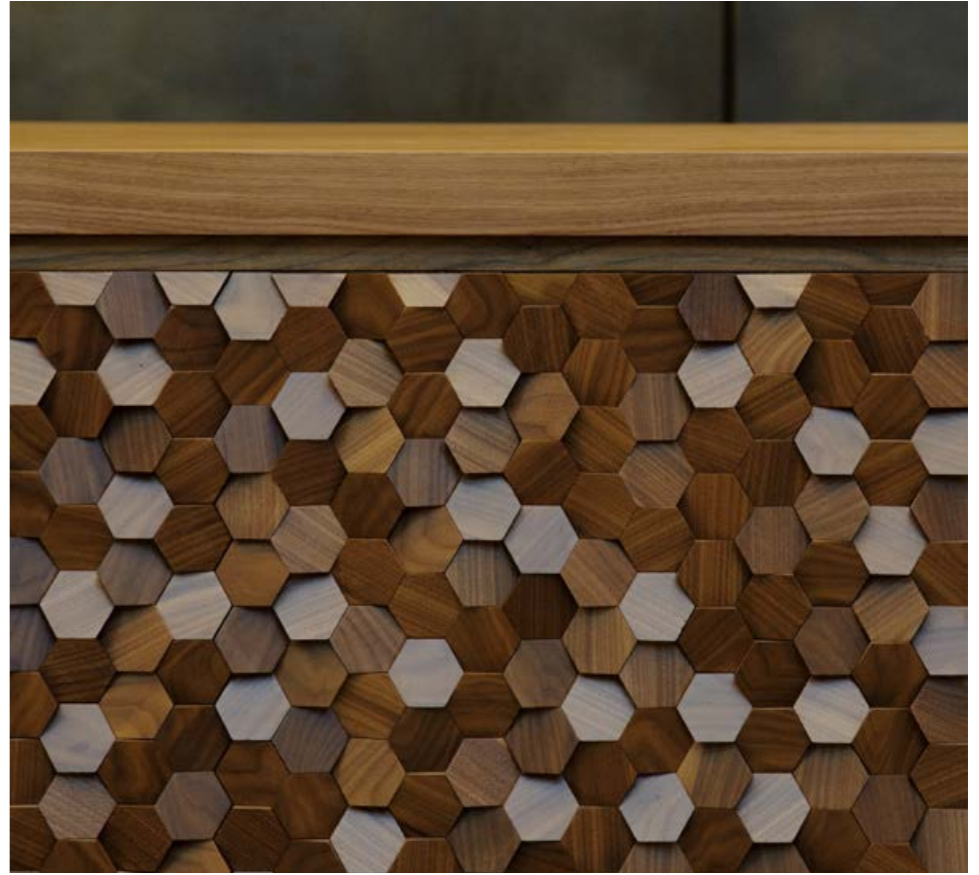
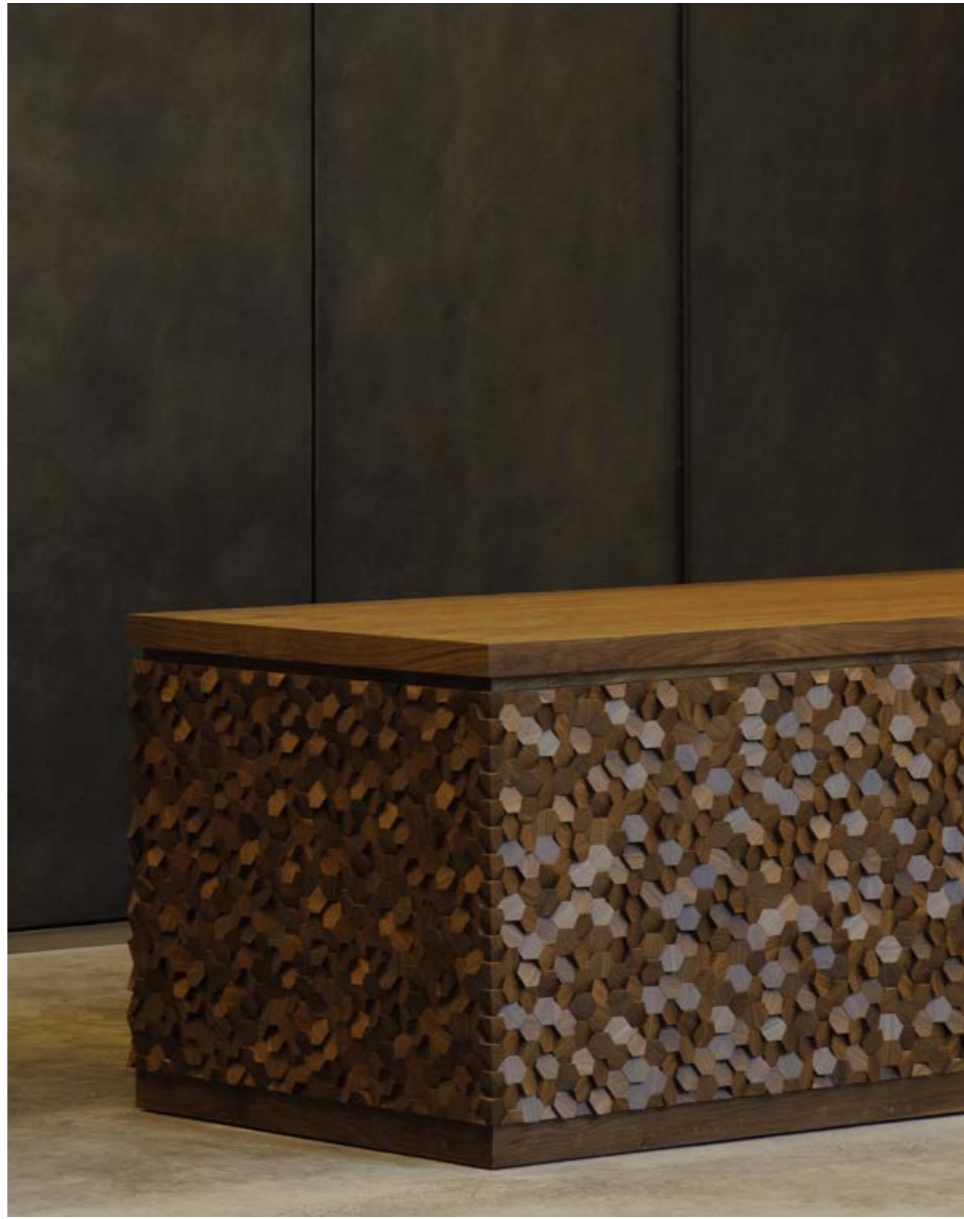
*A bold welcome*

Our desk for 'The Stage' greets visitors with a bold, sculptural presence in the lobby, creating a striking first impression.

Timber tiles reflect light like natural sequins, shimmering and shifting with movement, sparking intrigue when moving around the piece.

Seamlessly integrating with its industrial environment, the desk's linear and angular design provides a visually pleasing balance.

As the first element encountered in the space, the reception desk offers a warm and grounding welcome.



# Lotus

Guangxi, China - 2016

*A liberating landscape*

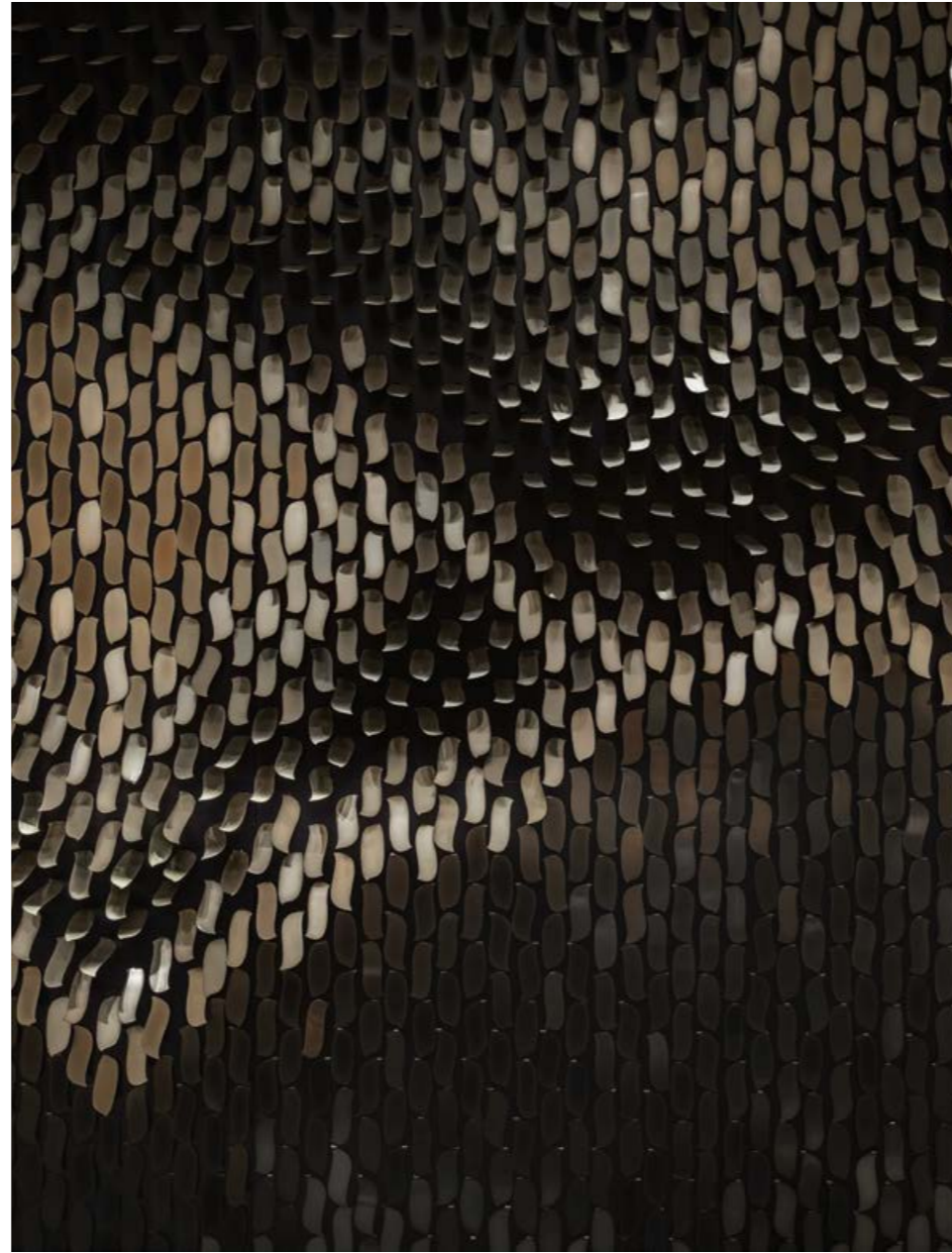
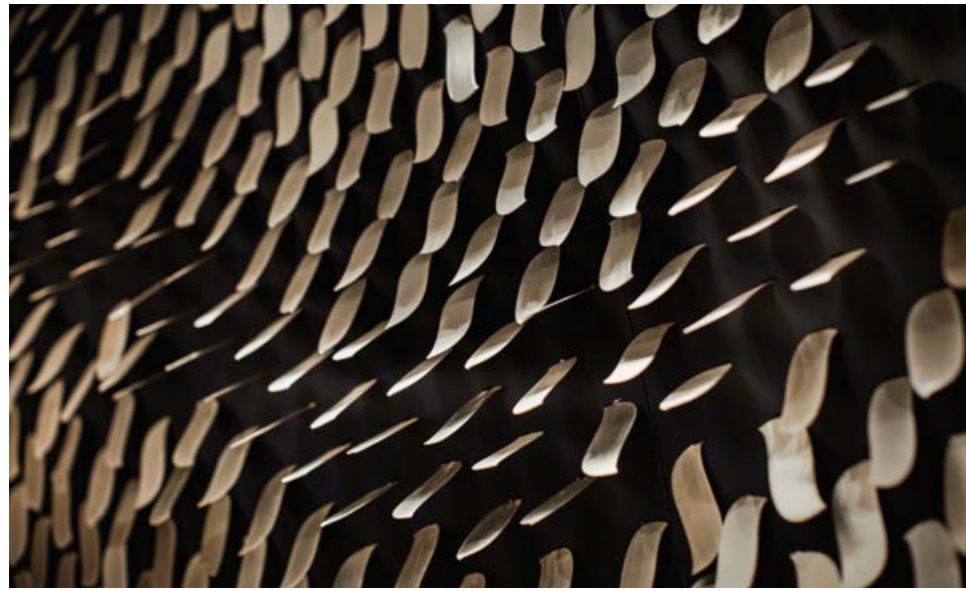
This large-scale textural artwork celebrates the lotus flower's delicate beauty and potent, positive symbolism.

Two giant murals mirror each other on opposing sides of a vast lobby space. Up close, they are lotus petals. With distance, they depict the famous mountains and lakes of the surrounding Guangxi province, connecting people to place.

Thousands of plated steel lotus petals in myriad tones appear to tumble freely from the sky.

And light hitting the artwork's surface creates a striking shimmering effect, which enhances the sense of life within the piece.









## Circular Sieve Screen

Manhattan, NY - 2024

*Shifting boundaries*

Suspended within the commercial space, this screen establishes a gentle boundary, offering privacy to the meeting room beyond.

Each circular form responds to touch, inviting those who pass to rotate and reshape the surface. Texture evolves and patterns emerge, creating a kinetic dialogue between people and place.

Daylight filters through the shifting composition, animating the space with quiet energy. The result is an artwork that's never static, it's a living surface shaped by touch, curiosity and interaction.



MARPLETHORPE HOUSE  
SUN and MOON  
BY THE MUSEUM  
PUBLISHED

## Westin Hotel

London, United Kingdom - 2021

### *Generous geometry*

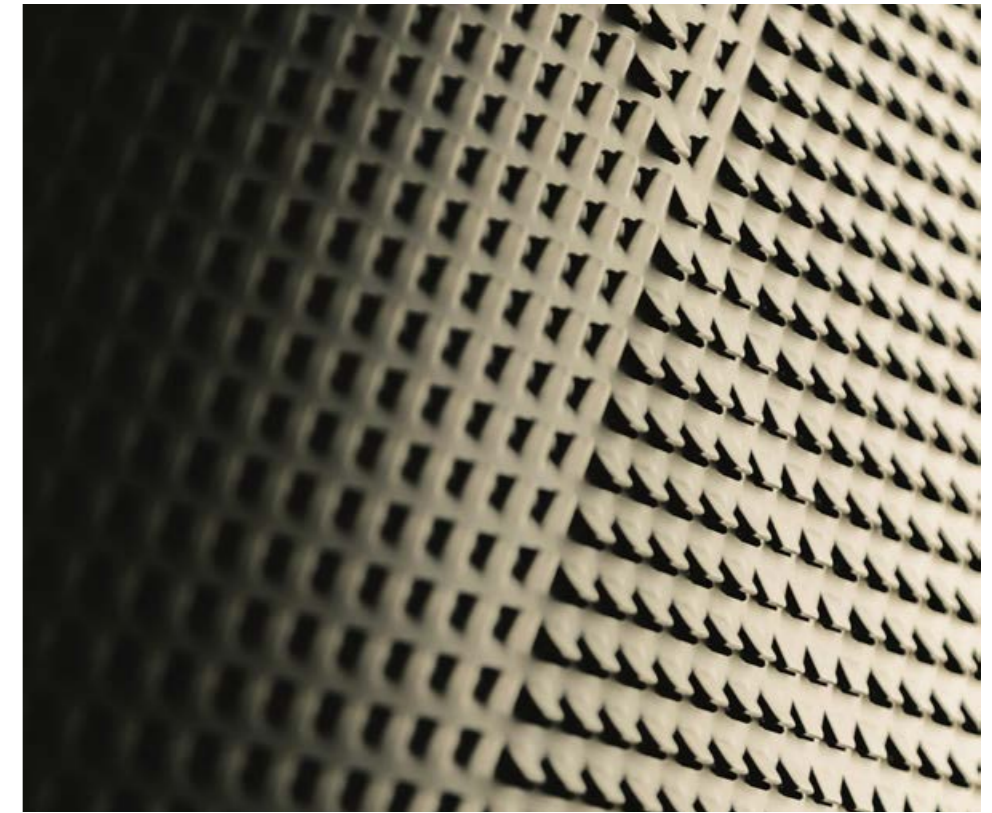
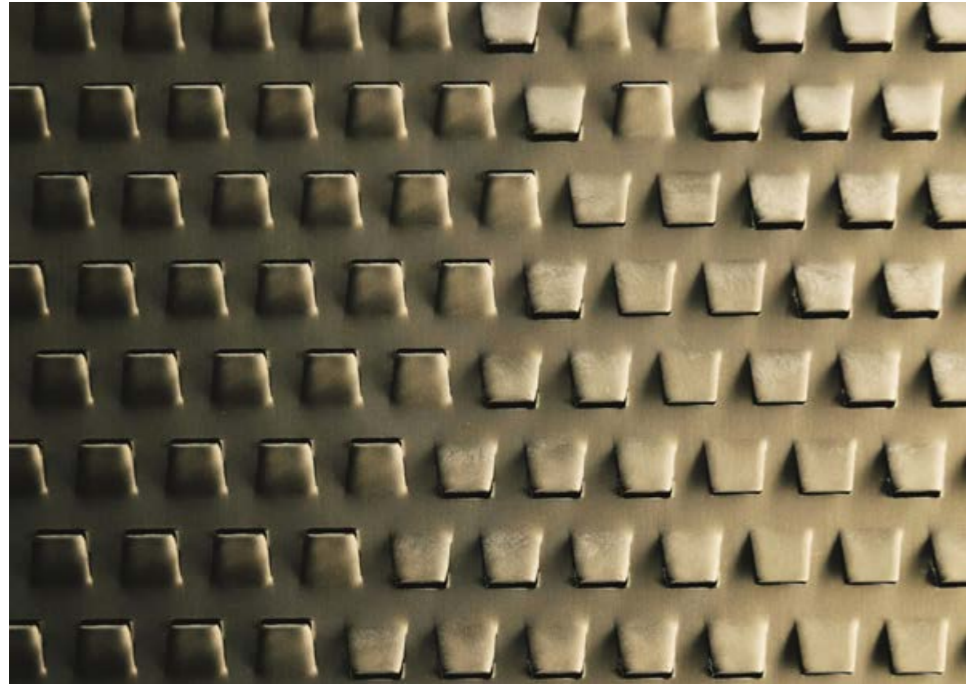
This artwork has a dual impact, reading as large panels at a distance and small pixels at close proximity.

Its purity draws people to touch the surface's fractal tactility.

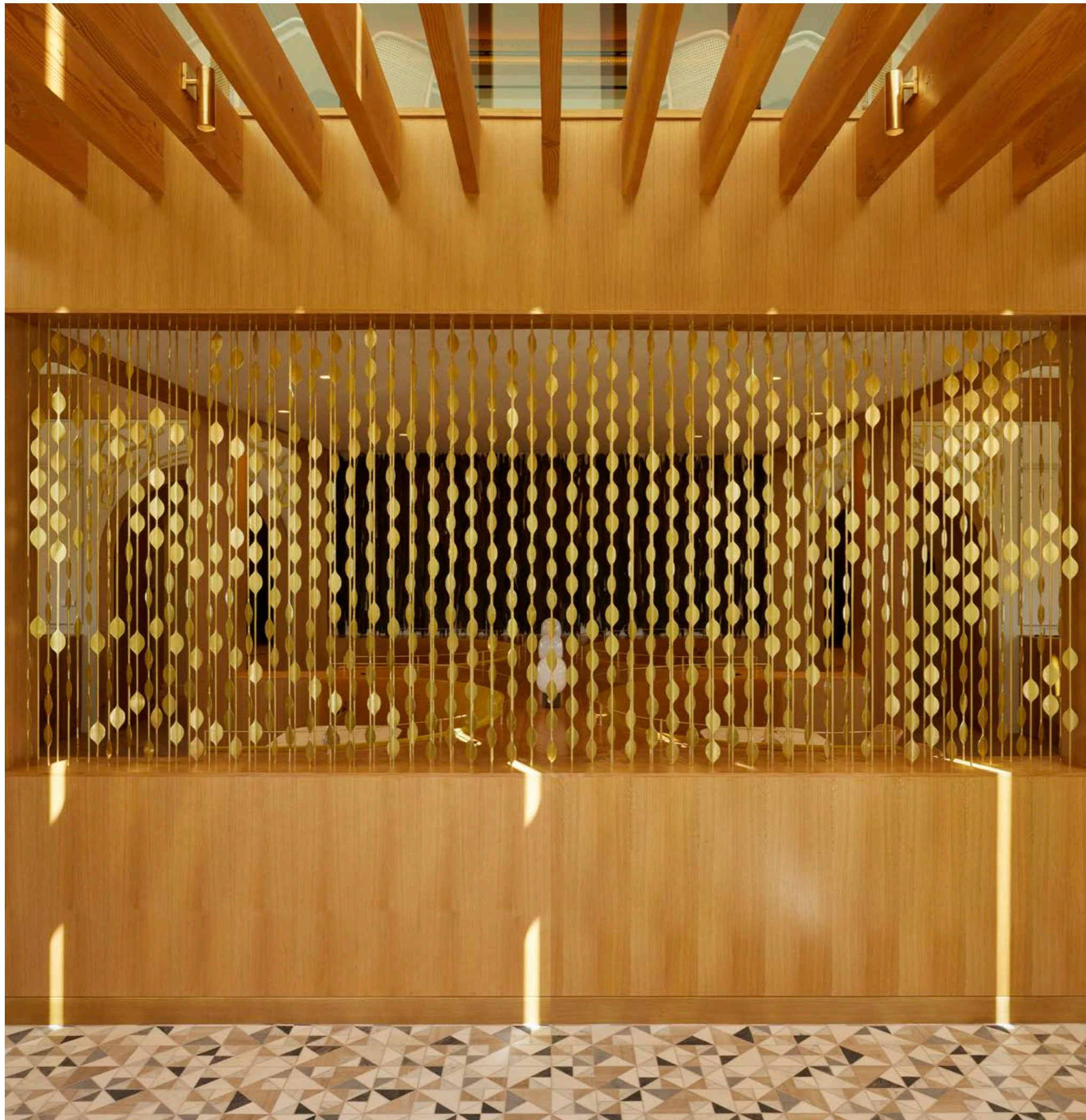
As a continuation of the floor's geometric patterning, it appears to grow up the wall, echoing the behaviour of light-seeking plants.

And its punctuated surface creates the effect of a soft structure that is gentle and light in character to quieten the mind.









## Bella Union Artistic Screen

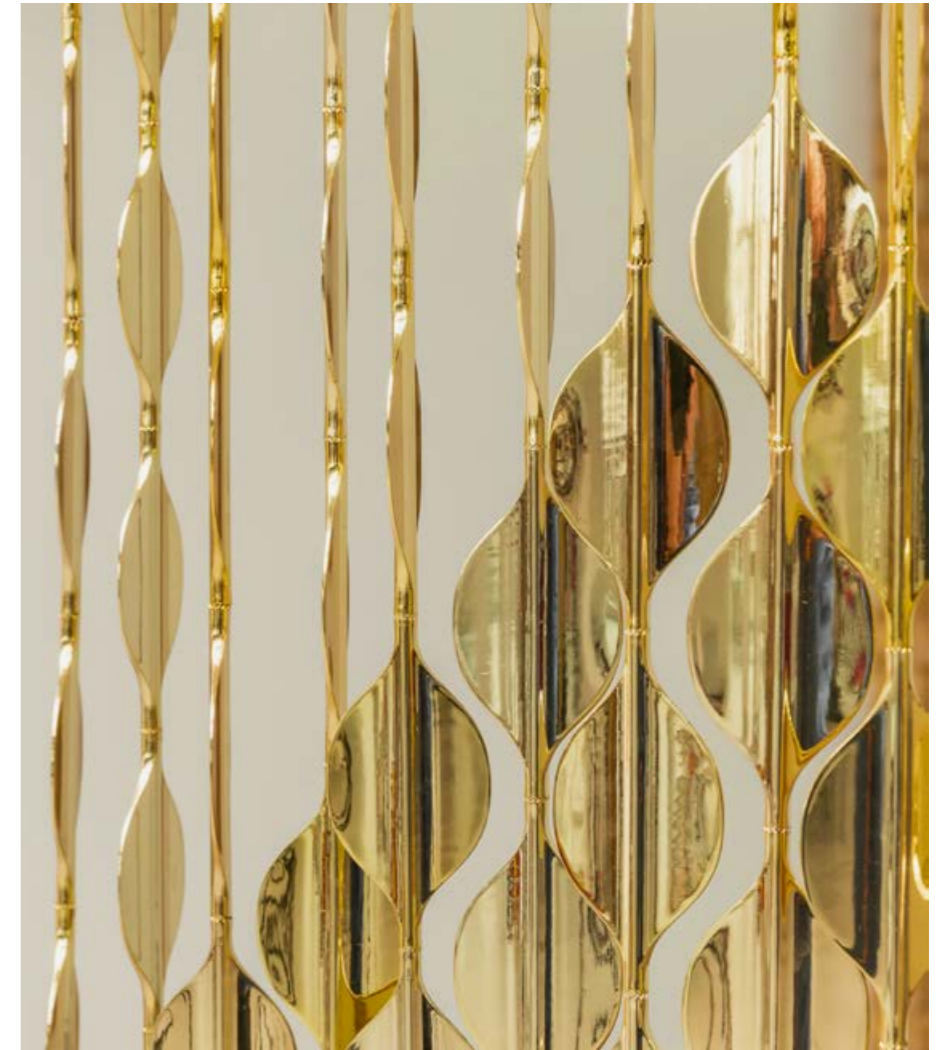
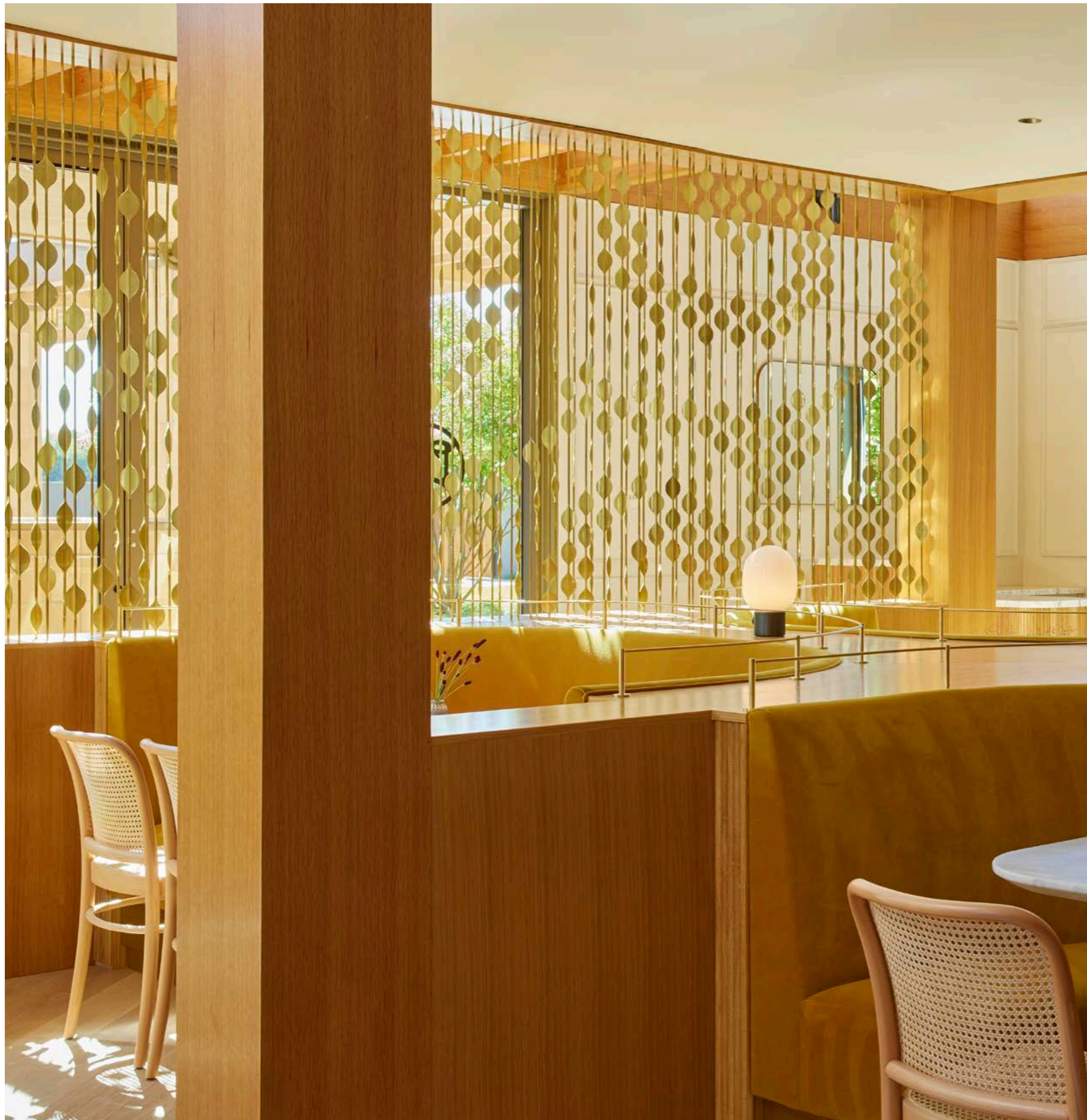
California, USA - 2024

*A seamless blend of structure and nature*

Inspired by surrounding vineyards, this artistic screen merges functionality with artistic expression, providing both privacy and visual intrigue.

At first glance, an elegant arrangement of suspended leaves. But as one moves, a subtle transformation unfolds, revealing an intertwined design of climbing vines, the screen becomes a living tapestry of form and movement.

Rooted in biophilic design, the screen evokes the gentle presence of nature, softening architectural lines and inviting a sense of calm.



## 9 Millbank

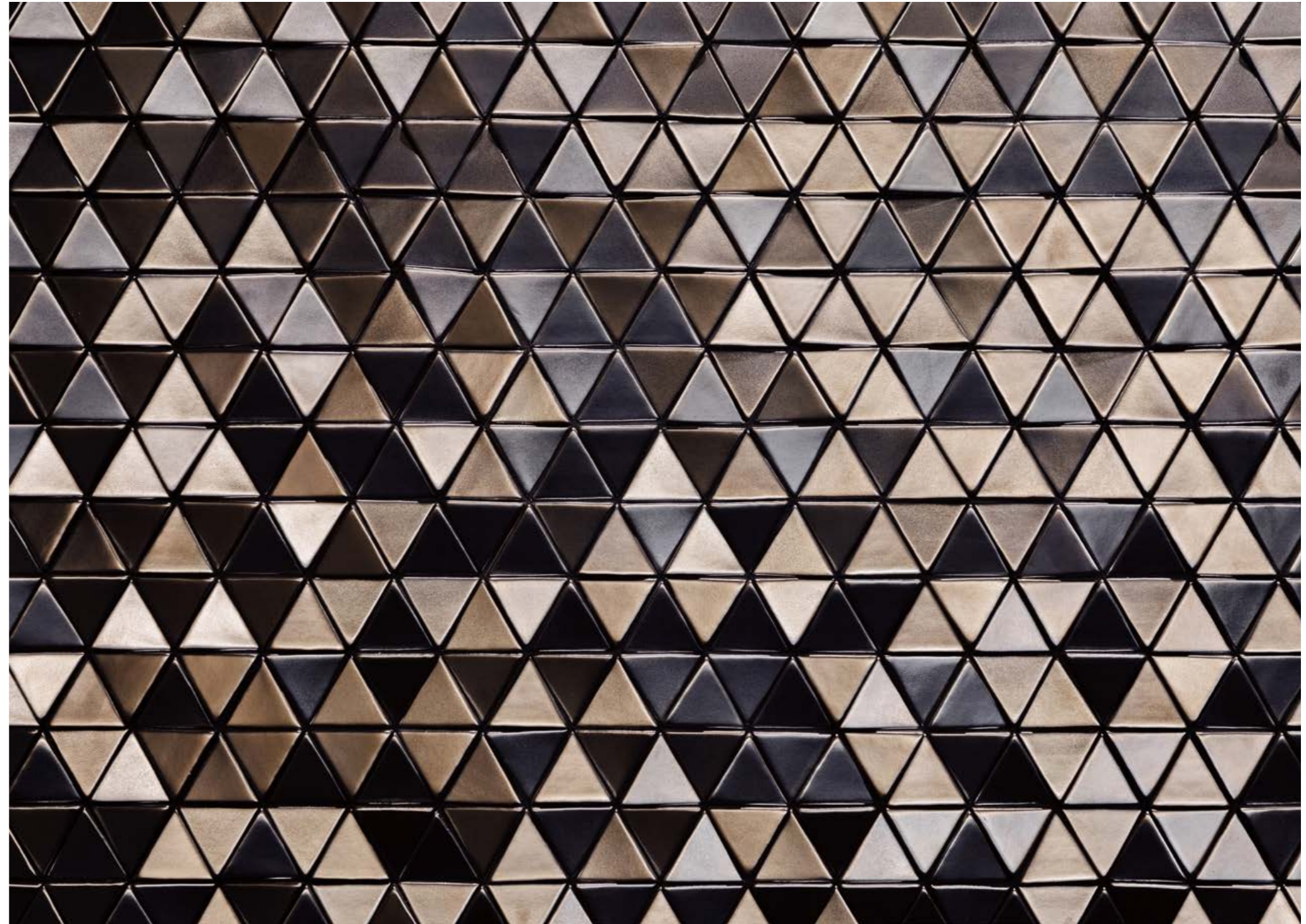
London, United Kingdom - 2021

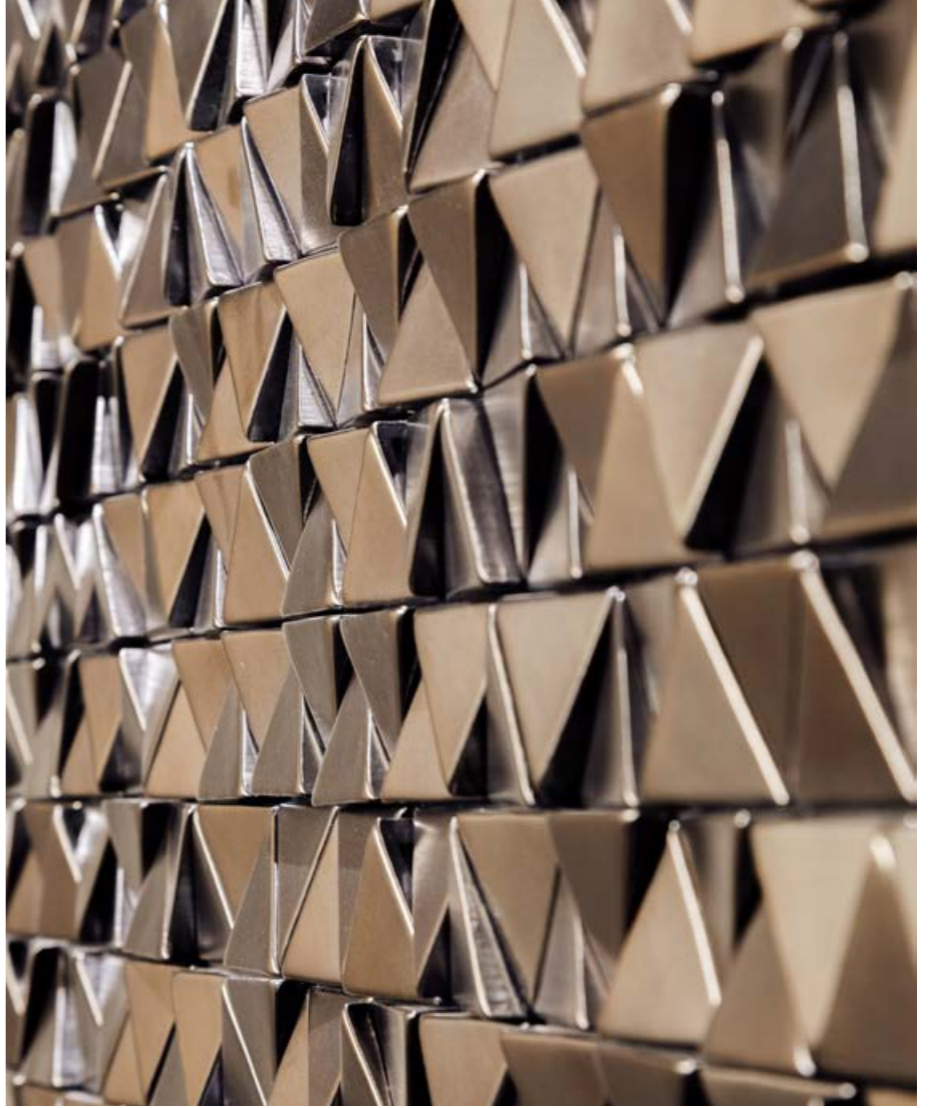
### *Radiant geometry*

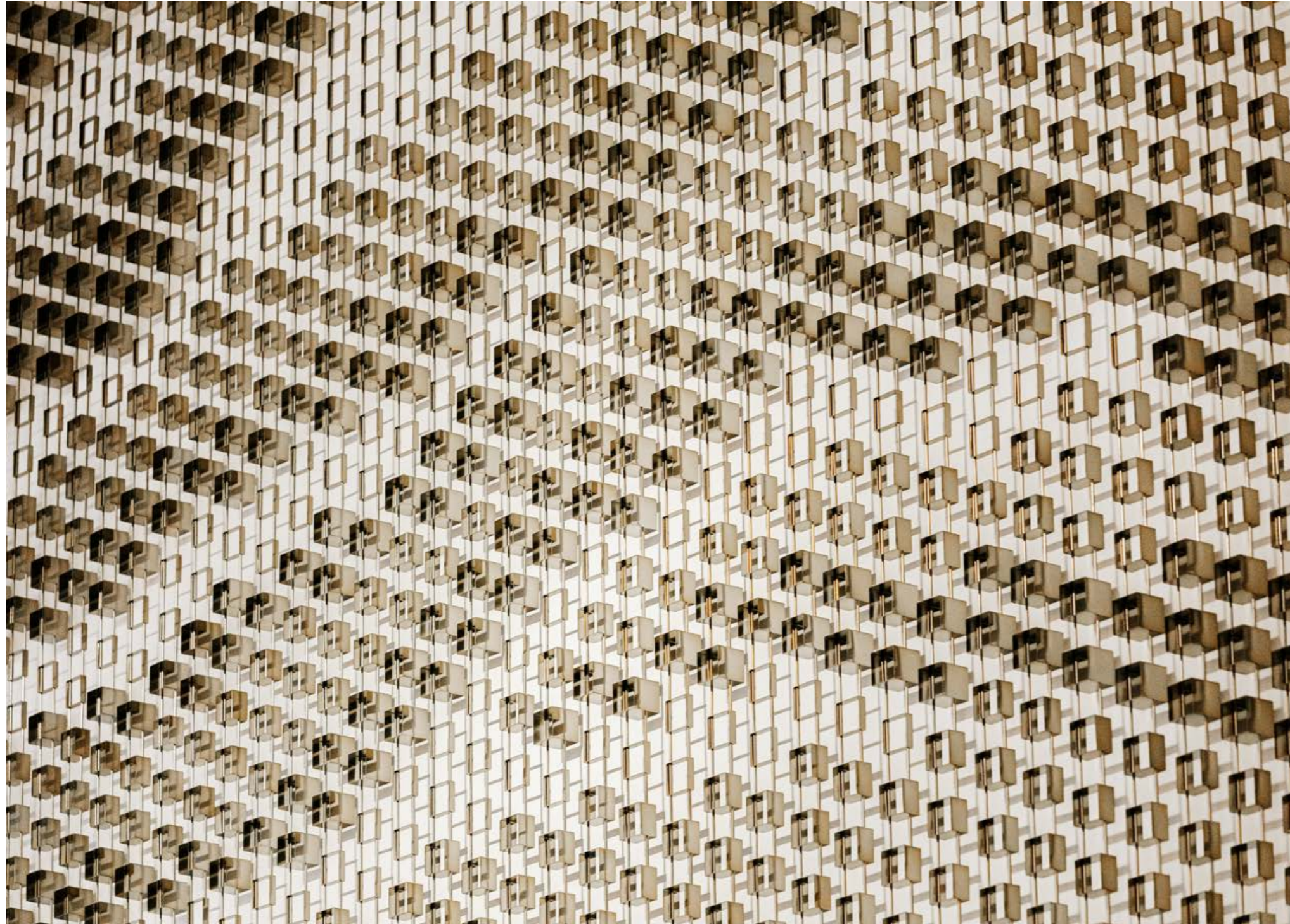
Hand-glazed ceramic 'Marsden' tiles adorn the reception of this prestigious residential development in Westminster, creating a rich display of textures for the eyes.

Shimmering forms reflect a plethora of light back into the lobby, becoming a captivating focal point upon entry.

Geometric shapes tessellate, adding a dynamic rhythm to the otherwise minimal and monochrome interior.







## Drift

Dubai, UAE - 2015

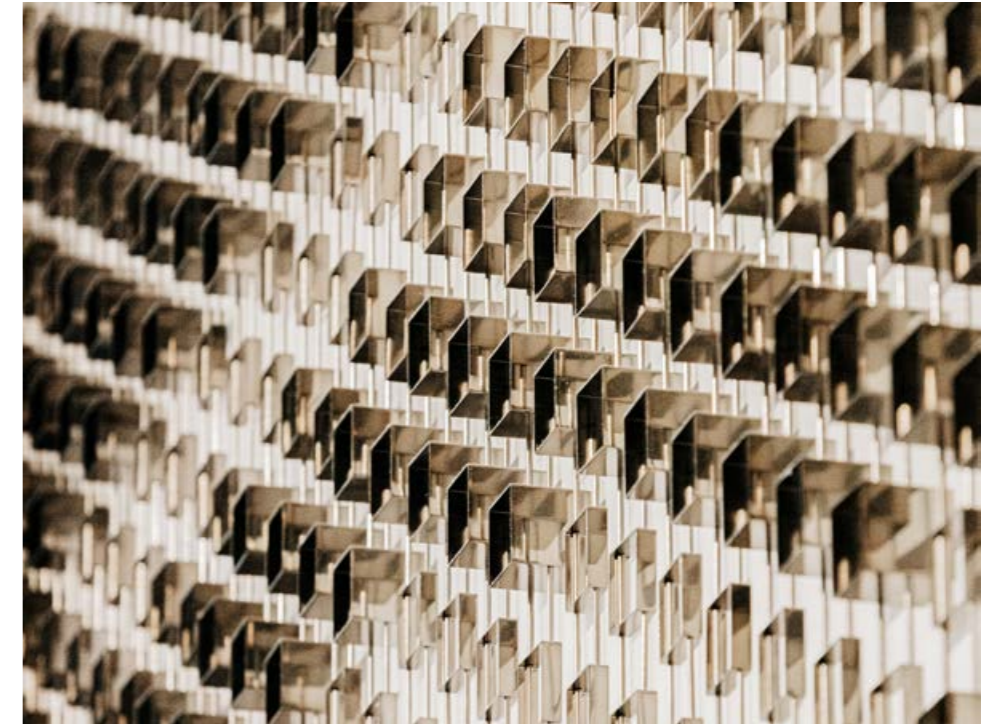
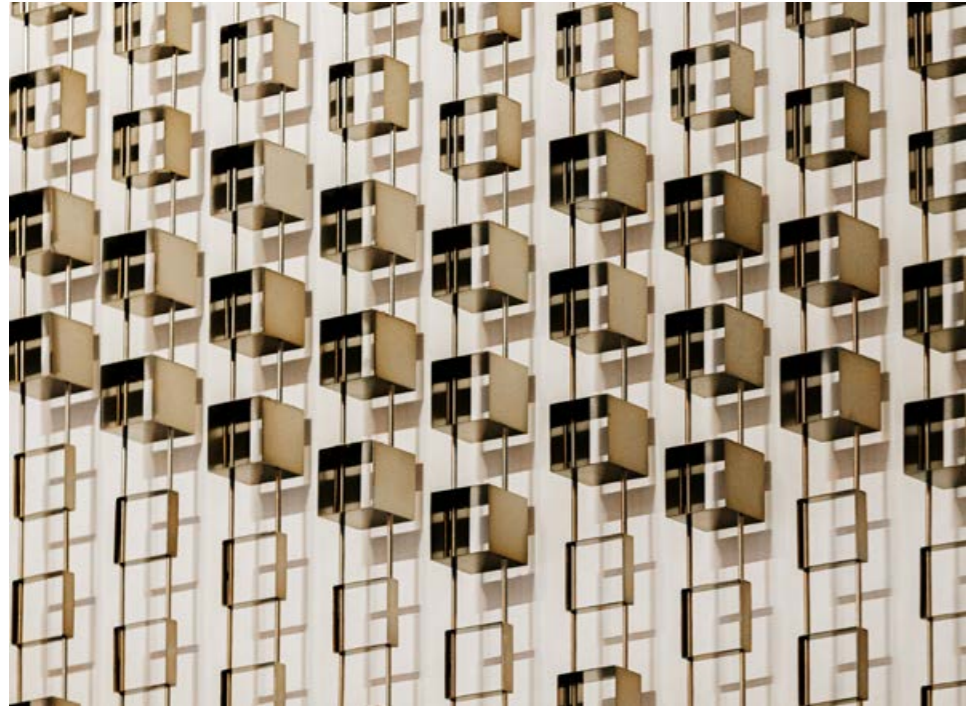
*Uplifting texture*

A 9m high work comprising thousands of suspended bronze-finish boxes of varying depths inspires awe with its height and fluid beauty.

Its polished surface respectfully reflects people's movements.

Shadows soften the metallic structure and mathematical grid.

And it appears to take energy from the sun as it moves across the space.



## Le Lido

Paris, France - 2014

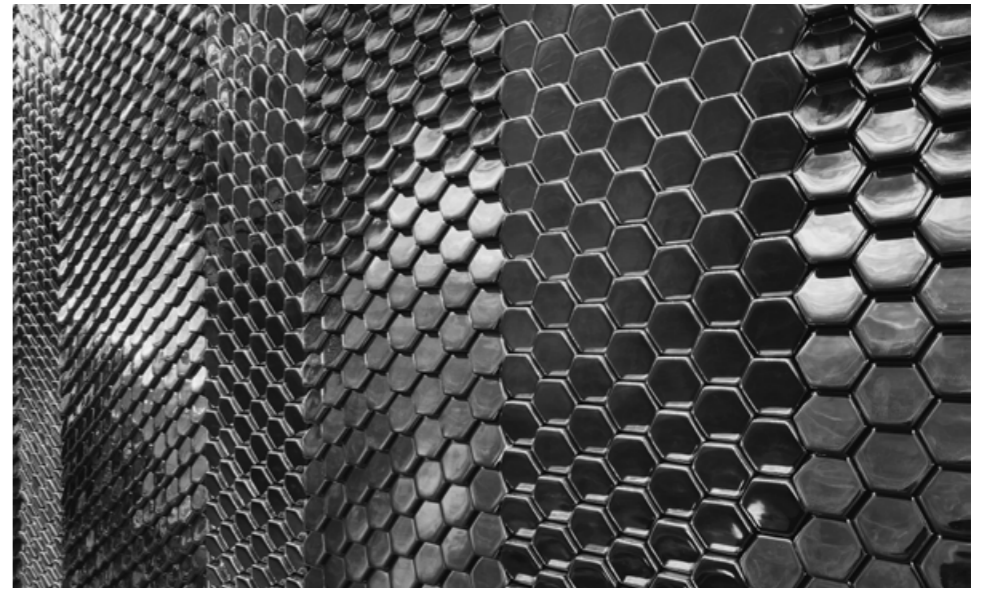
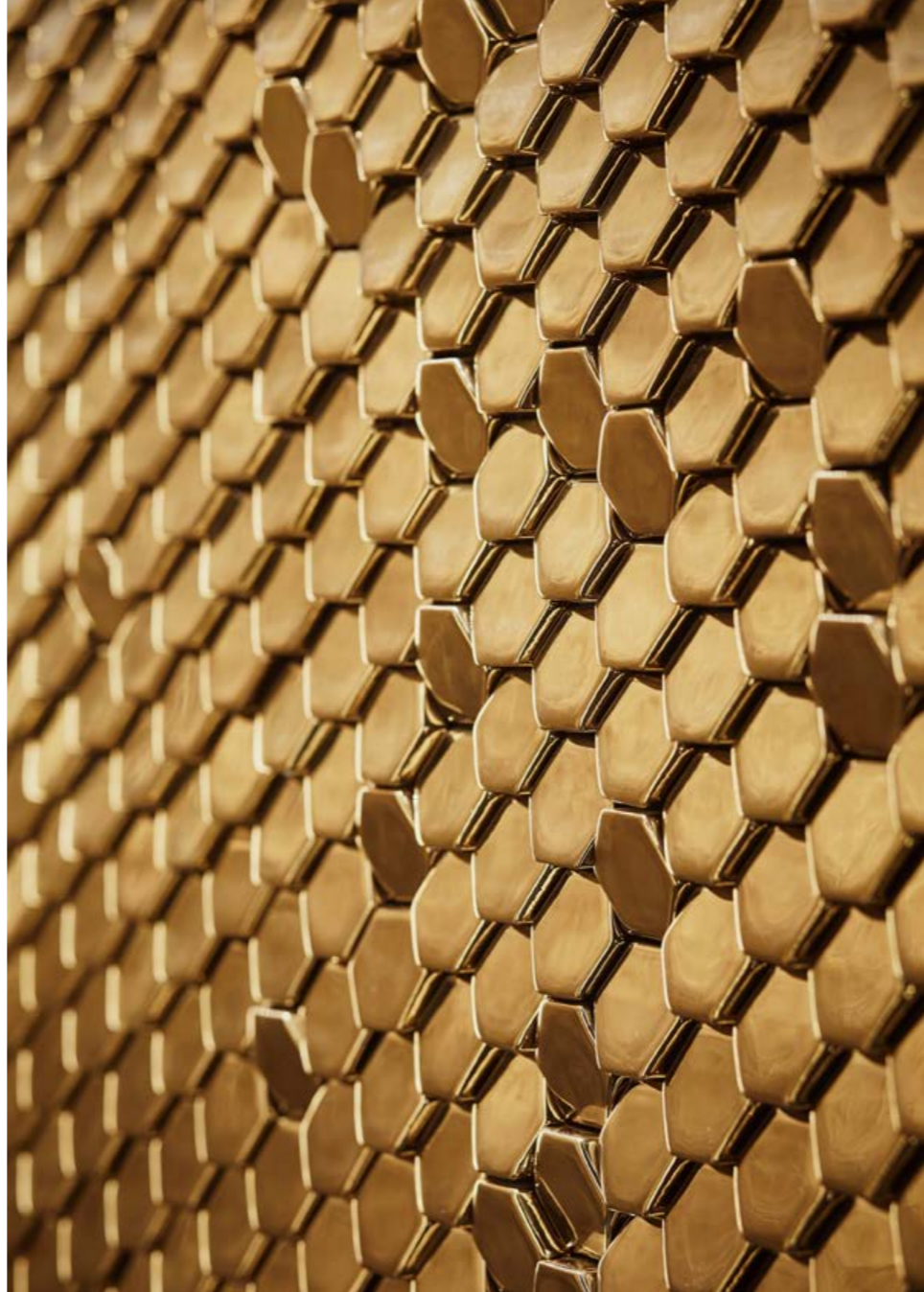
*A moment of opulence*

An installation which celebrates GMS's ceramic hexagonal tile in its purest form, seamlessly blending with the space to reveal its elegant geometry.

Each tile reflects light and shadow in a dance of texture and form, creating an atmosphere that feels both refined and authentic to the luxurious Parisian venue.

The bold materiality exudes warmth and understated elegance, drawing the viewer's gaze. As you move through the space, letters subtly reveal the venue's name.









## The Hub

Oslo, Norway - 2019

*A depth to explore*

Pleasure-inducing curvature is given centre stage in this reception space in an Oslo hotel.

As a softening presence, it contributes to the hotel's perceived comfort and welcome.

Its star-like, striking gradient of gold set against dark wood in randomised dissipation instils a sense of uplifting limitlessness.

And the biophilic motif of its intricate honeycomb formation promotes calmness of mind.





## Butlers Chocolate Cafe

Dublin Airport, Ireland - 2014

*An injection of warmth*

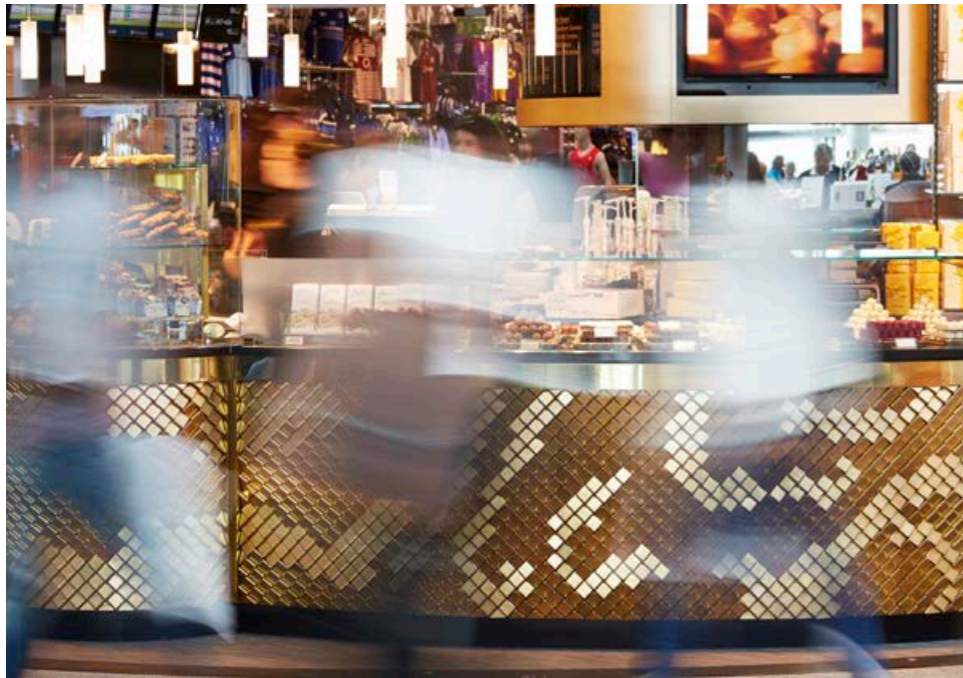
In the sterility of the airport environment, this richly textured artwork creates a welcome visual inspiration.

Its mellow-toned metallic finish reflects light into the space.

The chocolate-like tiles offer a playful and elevating extension of the product.

And the sense of movement in its flowing form and irregular patterning brings calm to the frenetic environment.





# Butlers Chocolates



Hot Chocolates		Cold Drinks	
Butlers Hot Chocolate	2.49	Hot Latte	2.99
Dark Hot Chocolate	2.49	Hot Chocolate	2.99
White Hot Chocolate	2.49	Hot Mocha	2.99
Light Hot Chocolate	2.49	Hot Tea	2.99
Hot Caramel Macchiato	2.99		
Ice Cream		Ice Cream	
Vanilla Hot Chocolate	2.99	Signature Sundae	2.99
Chocolate Hot Chocolate	2.99	Brownie Sundae	4.99
Triple Hot Chocolate	3.99	Hot Mocha	2.99
Dark Hot Chocolate	2.99	Hot Mocha	2.99
Hot Mocha	2.99	Hot Mocha	2.99
Hot Caramel Macchiato	2.99	Hot Caramel Macchiato	2.99

Free Wi-Fi

glass hut

sunglass



## Level Shoe District

Dubai, UAE - 2013

### *Floral harmony*

This composition features intricately arranged tiles in floral formations, utilising a variety of soft ceramic finishes to bring texture and depth to the space.

Inspired by principles of biophilic design, the mural evokes a connection to nature, with organic patterns and materials that enhance the well-being of those within the environment.

The blooms create a serene, tactile experience, seamlessly blending art and architecture in this luxurious setting.



## Stella McCartney

London, United Kingdom (Selfridges) - 2011

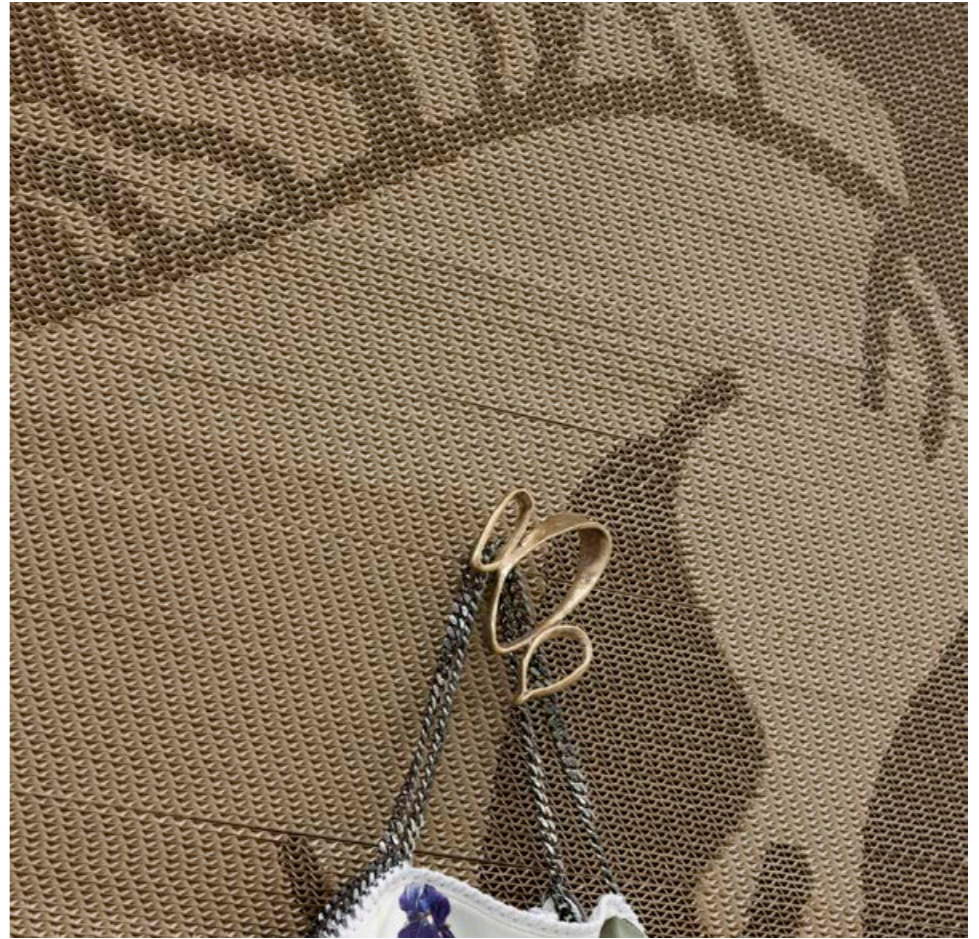
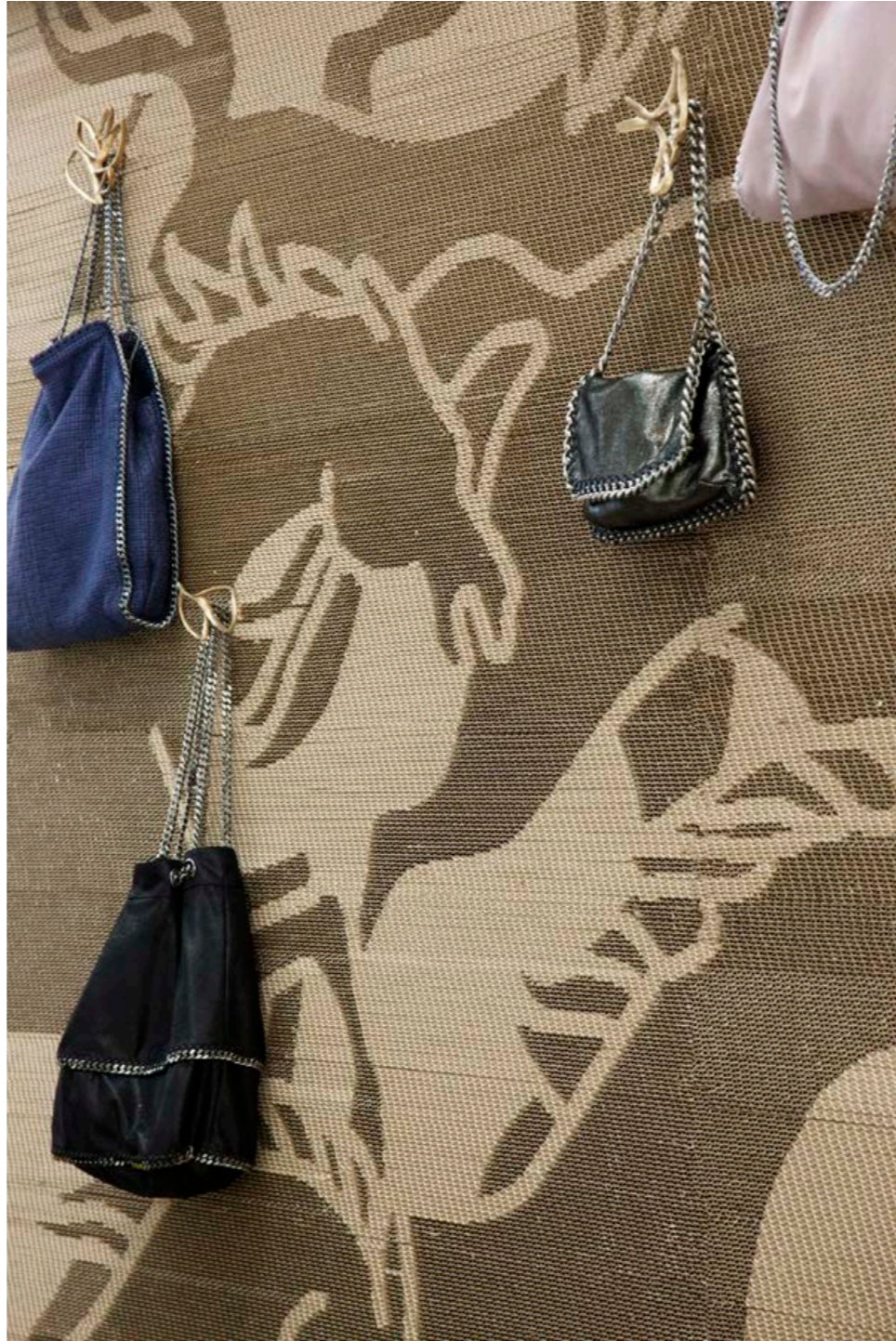
### *Sustainable spaces*

Cardboard, a sustainable and recyclable material, was carefully selected for its eco-friendly properties, revealing the material's potential to transform space through simplicity and texture.

A wide range of retail and branding projects reflect the shared commitment to sustainability between the studio and Stella McCartney.

Each artwork blends craftsmanship and innovation, which became a pivotal turning point for GMS.







## Clerkenwell Archway

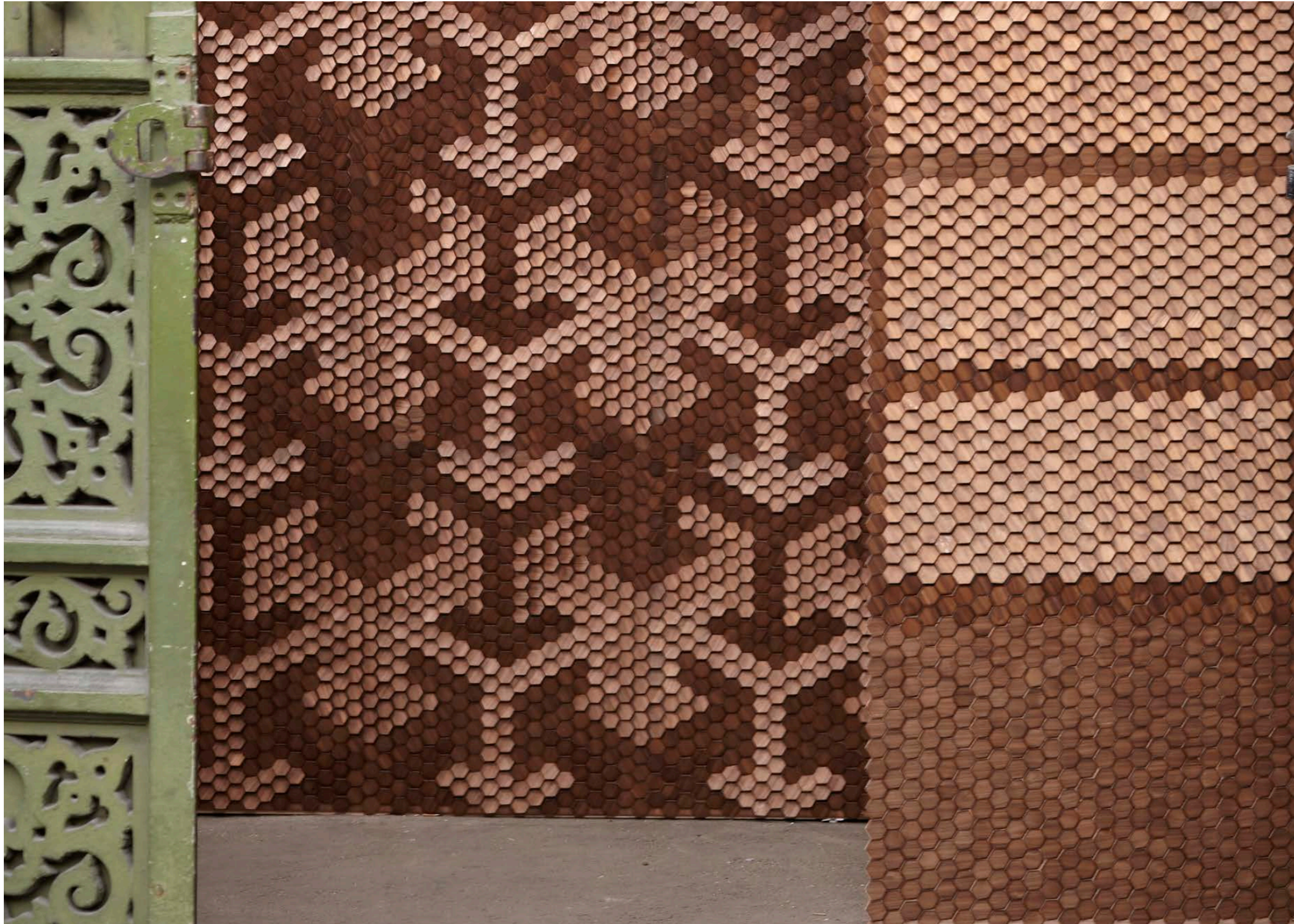
London, United Kingdom - 2012

*A punctuation in history*

Nestled within the historic concrete arches of the 150 year old Farmiloe Building, the Clerkenwell Archway formed a seamless dialogue between past and present.

Inspired by the Japanese concept of *shitsukan* - the perception of material qualities - the use of timber emphasised its natural texture and warmth, enhancing the sensory experience of the space.

The interplay of light and shadow across the angled surfaces brought the material to life, creating a tactile, immersive gateway to the design festival.



## Pricing

Due to the bespoke nature of our surfaces, our projects are priced individually. Please contact the studio for more information.



# Giles Miller Studio

+44 (0) 20 7293 0253  
enquiries@gilesmiller.com  
gilesmiller.com

## Sensory Artistry

