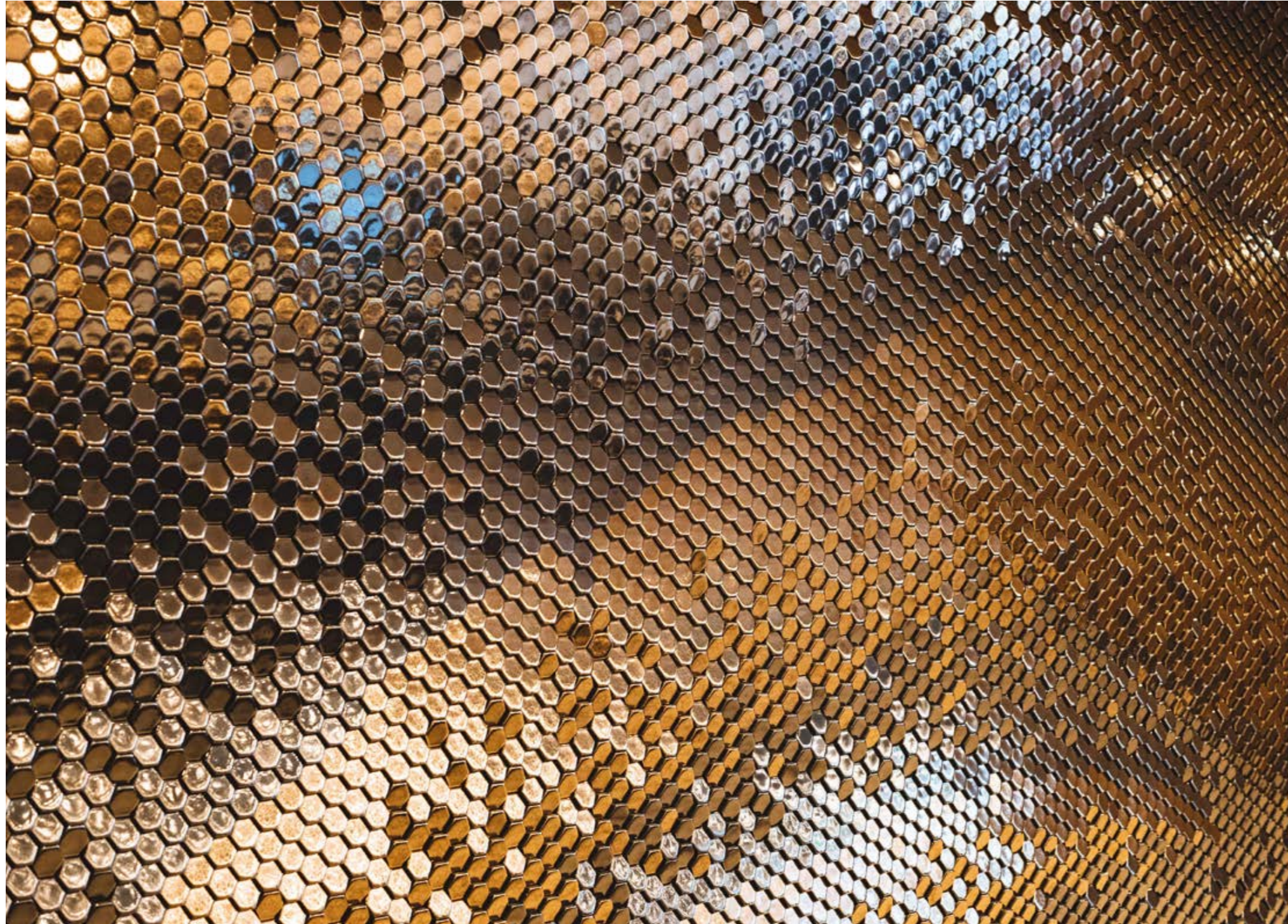




Giles Miller Studio
Surface Portfolio

Sensory Artistry



Our artistic purpose is to benefit the human experience.

Neuroscience has proven art's ability to promote wellbeing. It validates our purpose.

Art communicates with and unites our senses. It has the power to make us feel pleasure, awe, comfort, serenity, and excitement.

It's a power we study, channel, and perpetuate.

We call it sensory artistry.

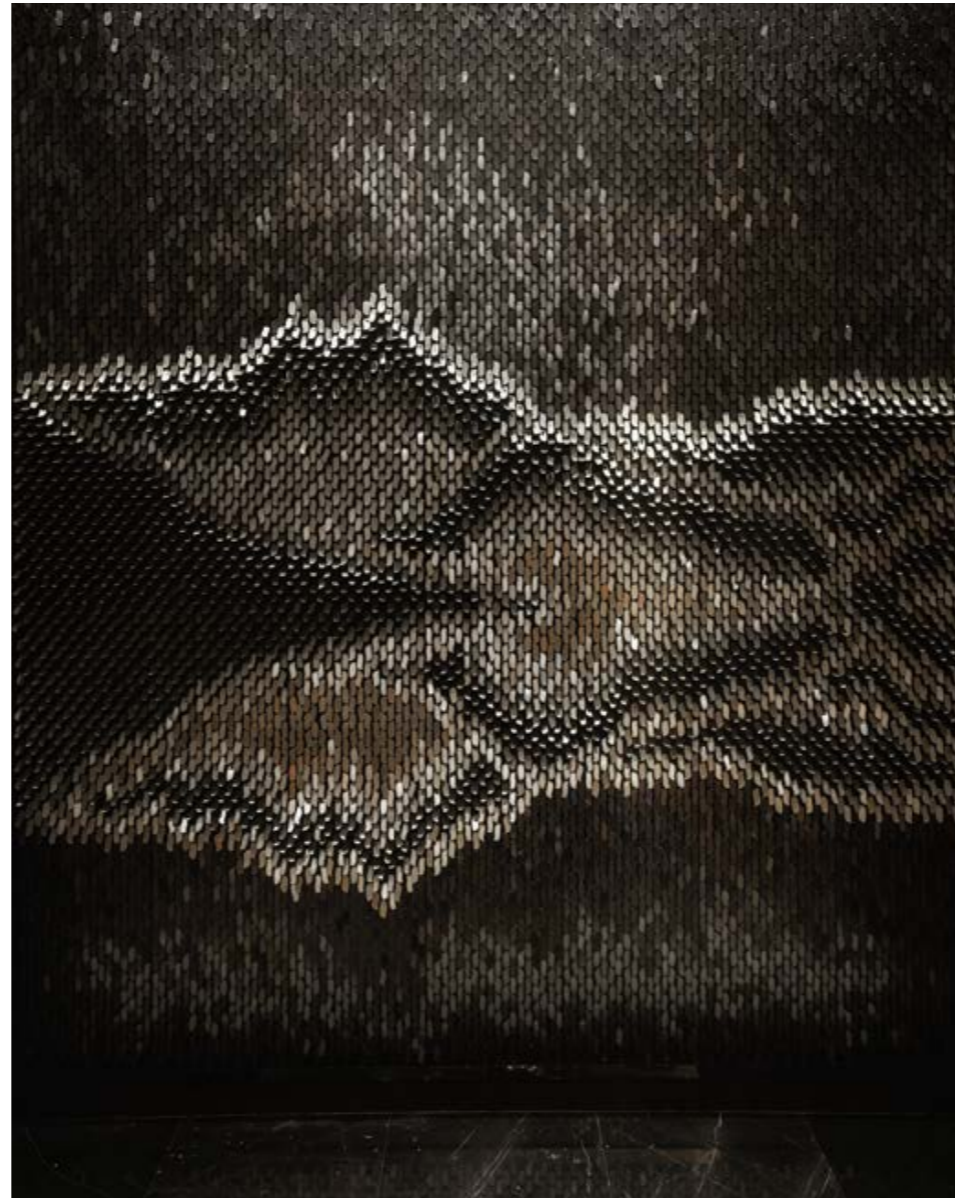


Giles Miller Studio creates dimensional and innovative surface murals. The textures, finishes and compositions in these bespoke pieces captivate and communicate with the senses in a subtle yet profound way.

Our process is that of a composer, combining materials with light to create elegant and original artworks. Each piece features unique textural content, meticulously tailored to suit the needs and context of the project.







“All the artwork installed looks fantastic. Often when you commission a piece of such scale, there is an element of risk and you are never sure how it will turn out, but the process and execution has been outstanding.”

Nick Jordan (Director, Studio Jordan)



Berkeley Square House

London, United Kingdom - 2024

Harmony and balance in the city's discord

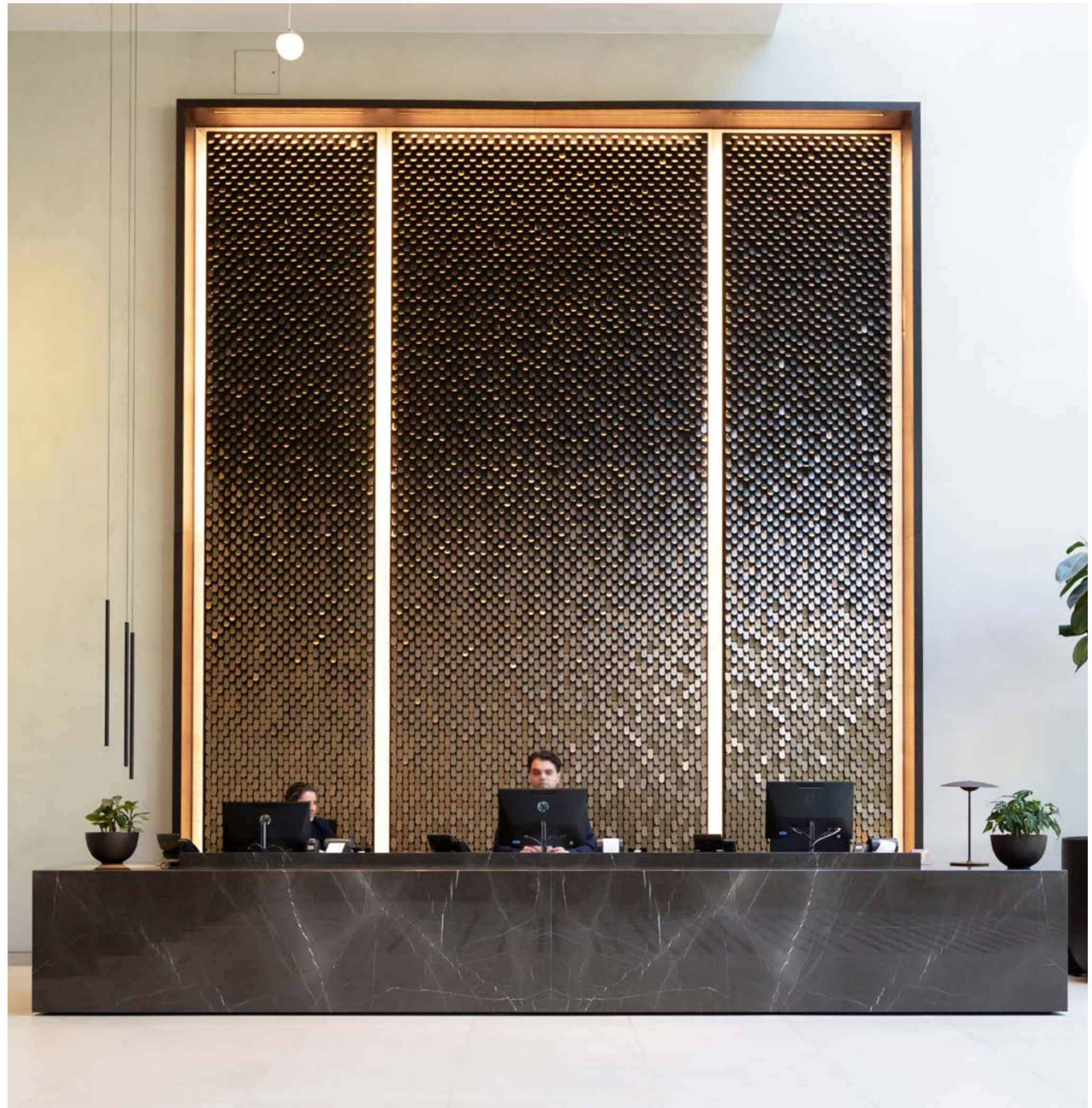
Two surface installations create sanctuary in London's frenetic centre.

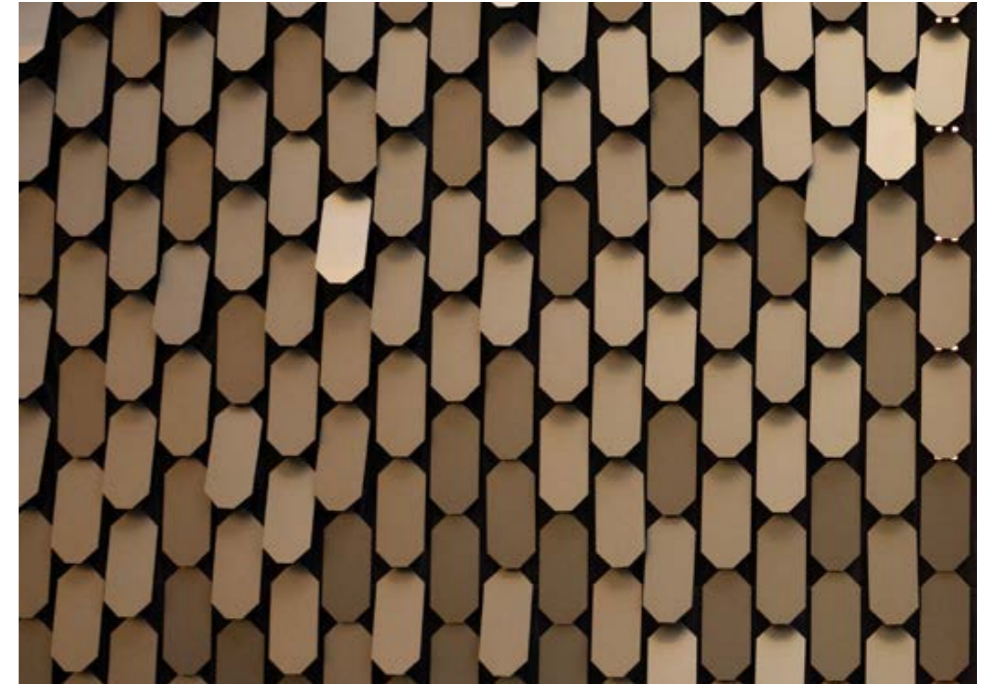
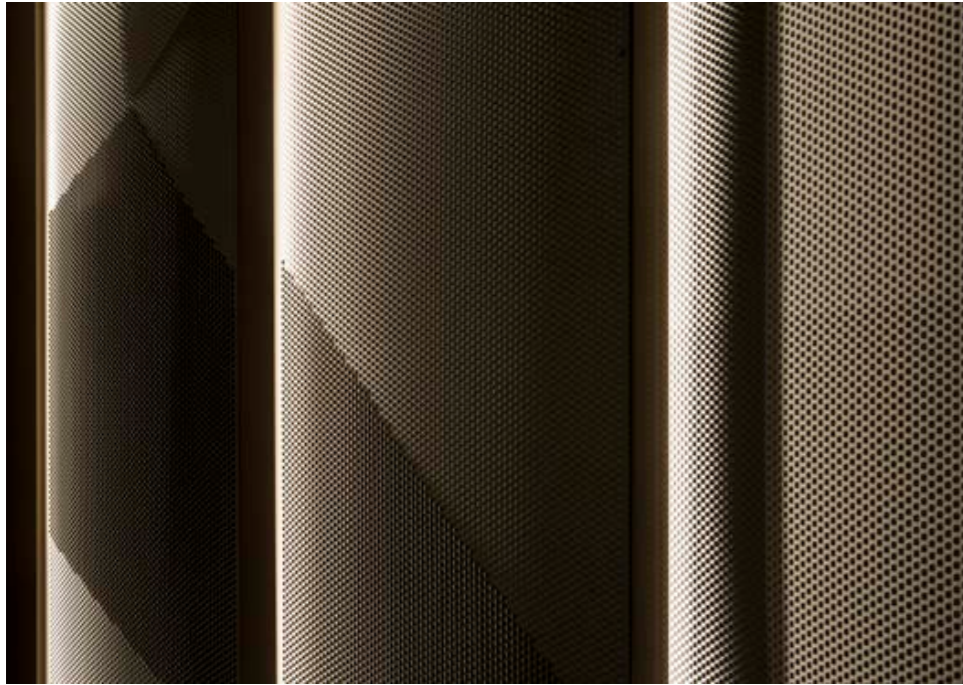
The height of both pieces elicits a feeling of liberation.

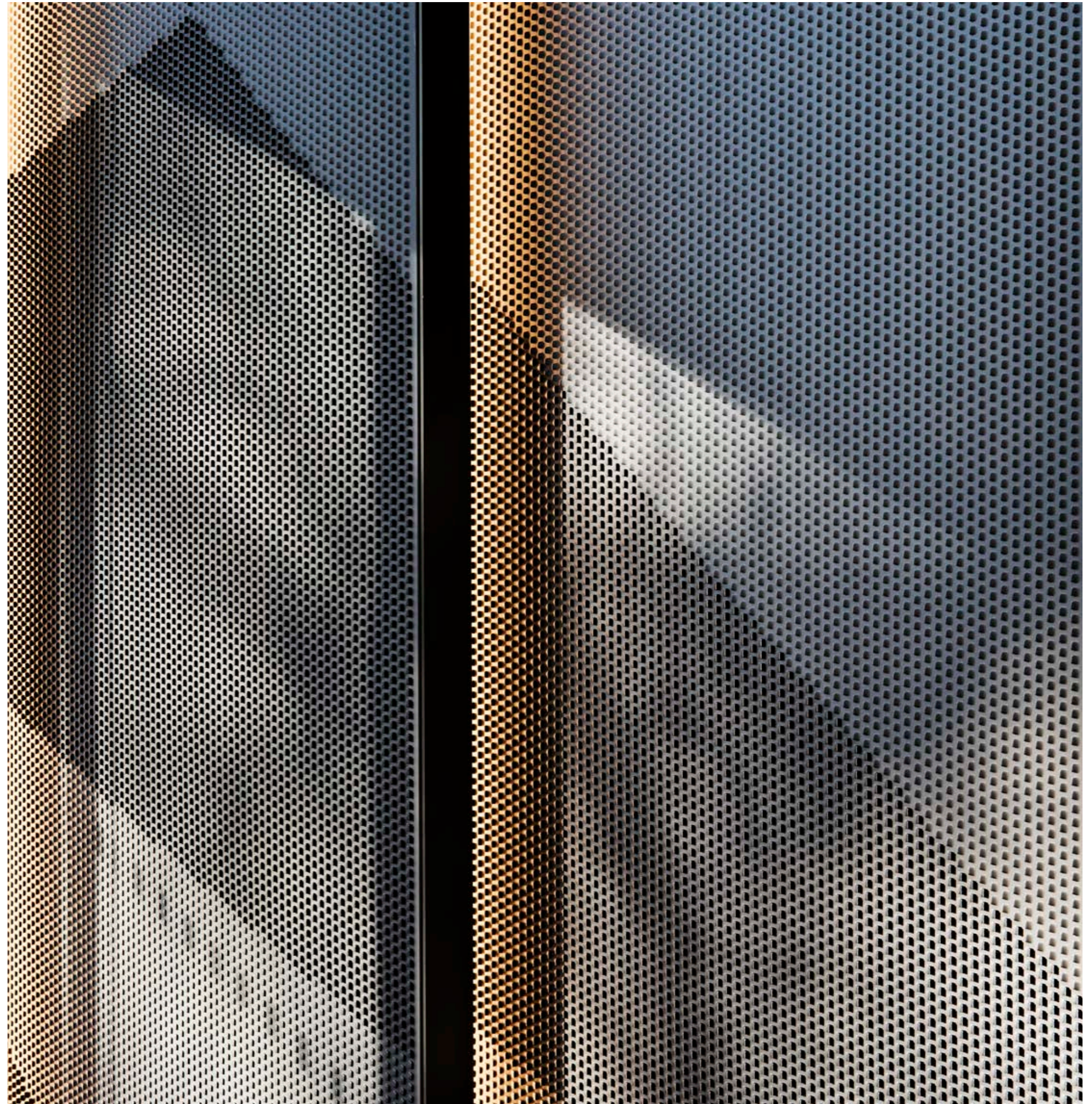
Vast curves feed the human mind's need for organic forms and gently guide people into the building.

Rhythmic patterns bring symmetry that inspires a sense of grounding comfort and calm.

And the constant movement of reflected sunlight stirs an enlivening, uplifting energy.









Camley Street

London, United Kingdom - 2022

Cognitive restoration

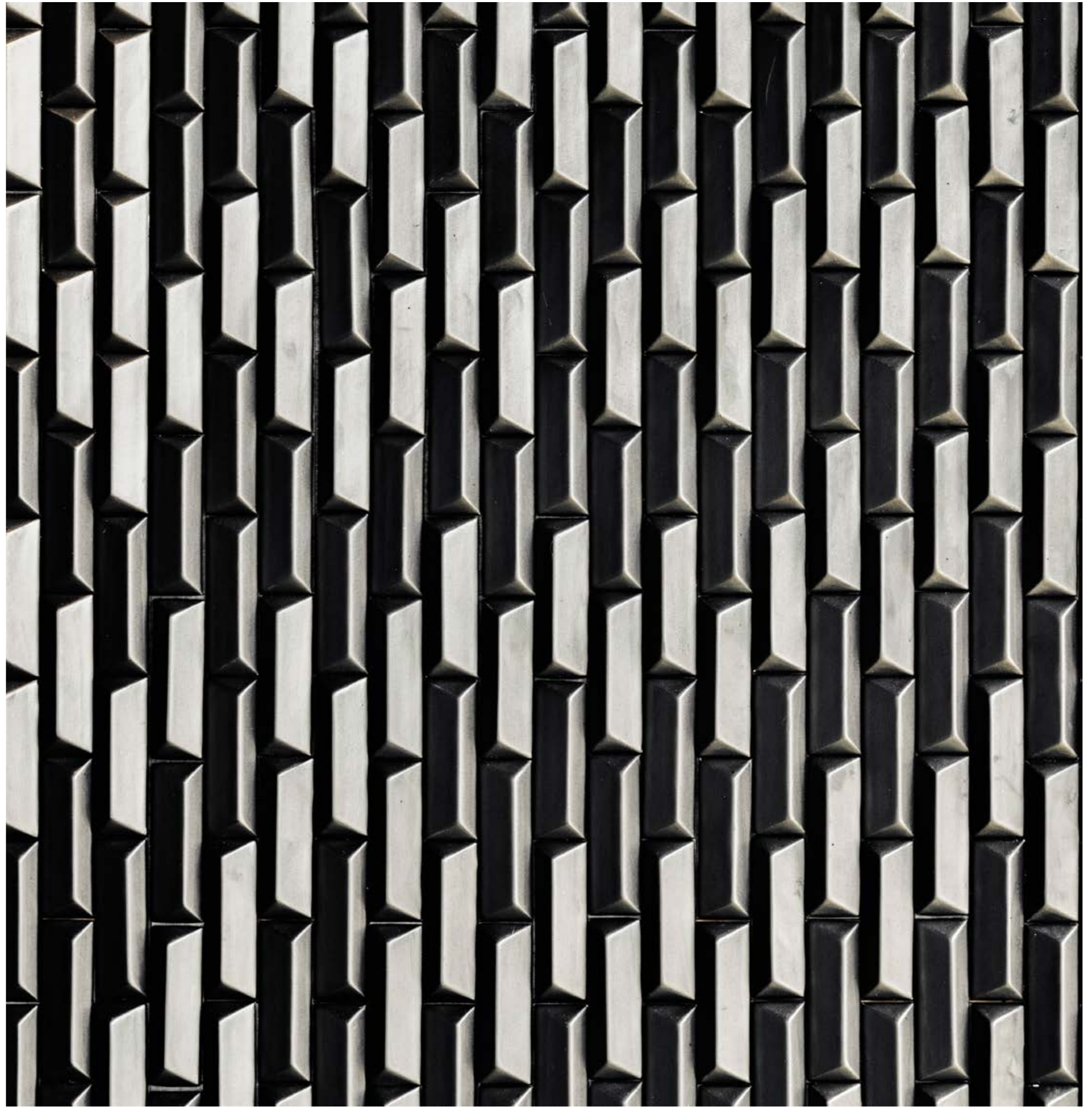
Black colouration embraces the history of the building this piece adorns in London's Victorian coal store.

People are reflected in the deep black tiles, bringing colour flashes that form new perspectives of the artwork's effect.

A hidden door is an unexpected shift in expected solidity.

The sleek tactility of linear and angled faces invites touch.

And the digital effect of the randomised pattern is reminiscent of geology, eliciting a positive response as it grounds the mind.





Lotus

Guangxi, China - 2016

A liberating landscape

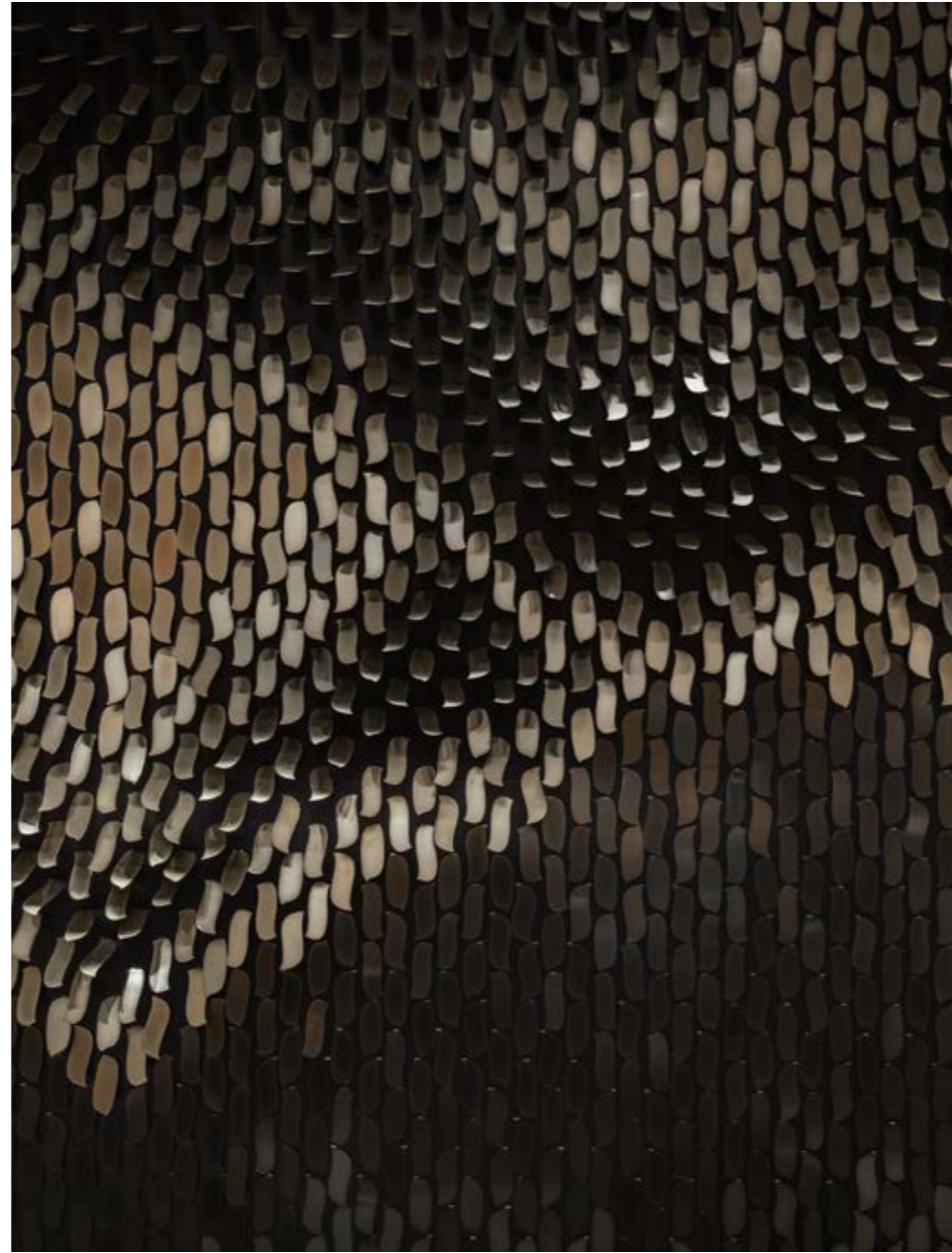
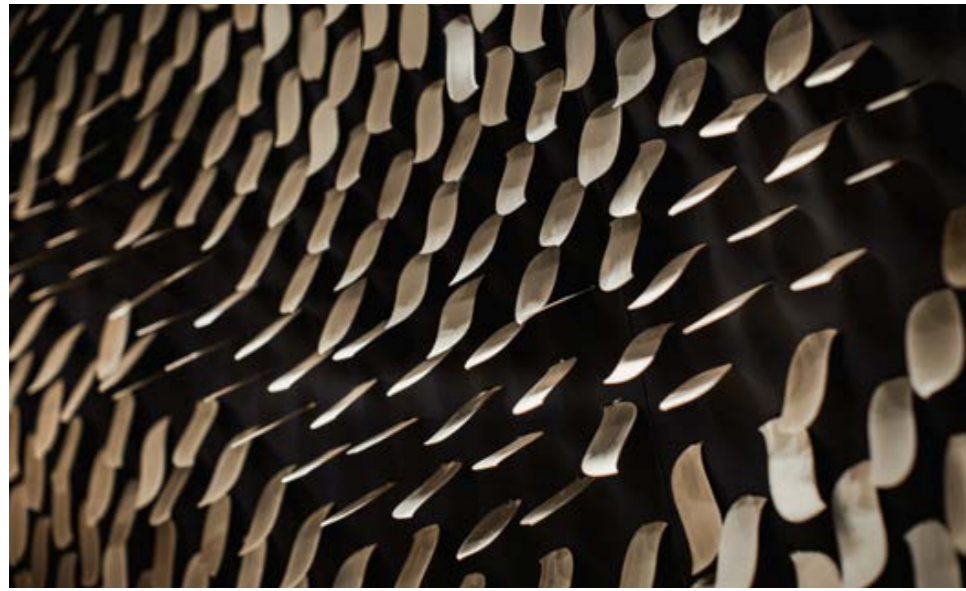
This large-scale textural artwork celebrates the lotus flower's delicate beauty and potent, positive symbolism.

Two giant murals mirror each other on opposing sides of a vast lobby space. Up close, they are lotus petals. With distance, they depict the famous mountains and lakes of the surrounding Guangxi province, connecting people to place.

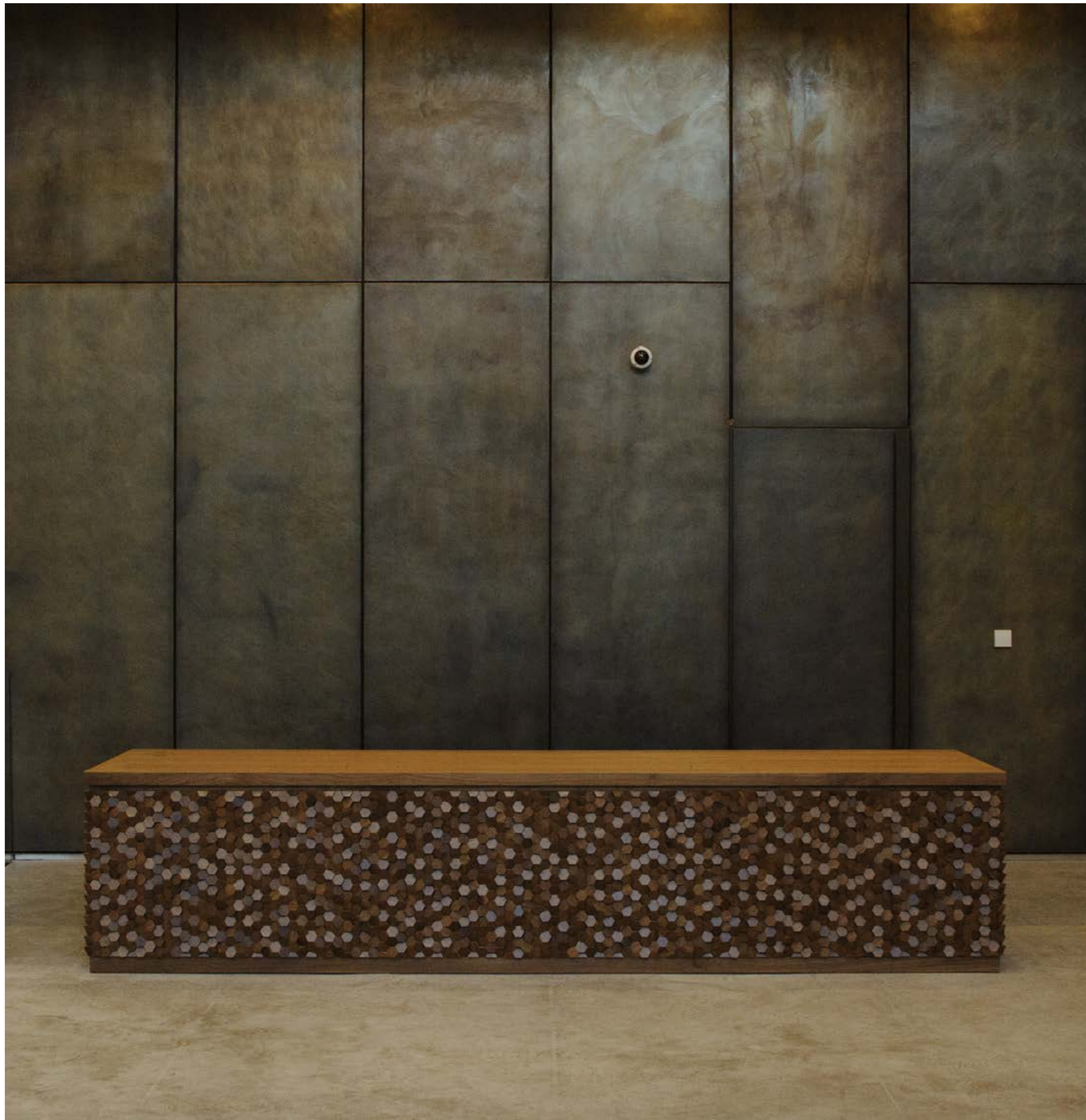
Thousands of plated steel lotus petals in myriad tones appear to tumble freely from the sky.

And light hitting the artwork's surface creates a striking shimmering effect, which enhances the sense of life within the piece.









The Stage

London, United Kingdom - 2020

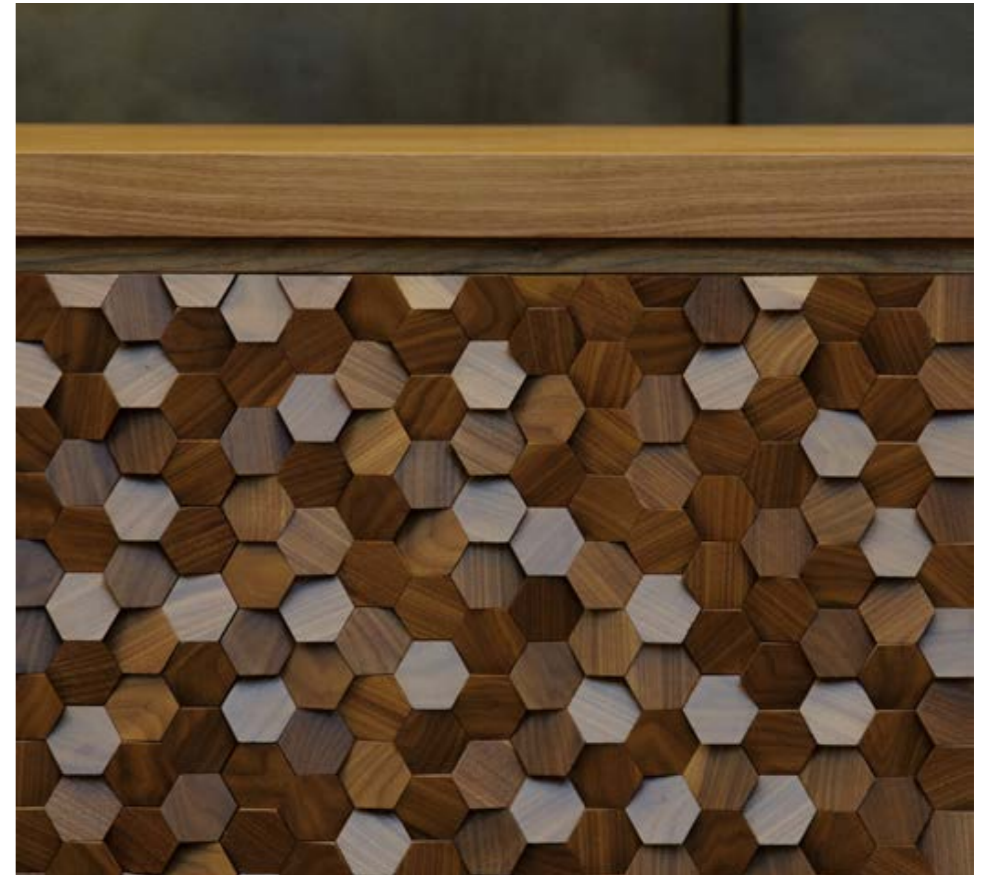
A bold welcome

Our desk for 'The Stage' greets visitors with a bold, sculptural presence in the lobby, creating a striking first impression.

Timber tiles reflect light like natural sequins, shimmering and shifting with movement, sparking intrigue when moving around the piece.

Seamlessly integrating with its industrial environment, the desk's linear and angular design provides a visually pleasing balance.

As the first element encountered in the space, the reception desk offers a warm and grounding welcome.



Westin Hotel

London, United Kingdom - 2021

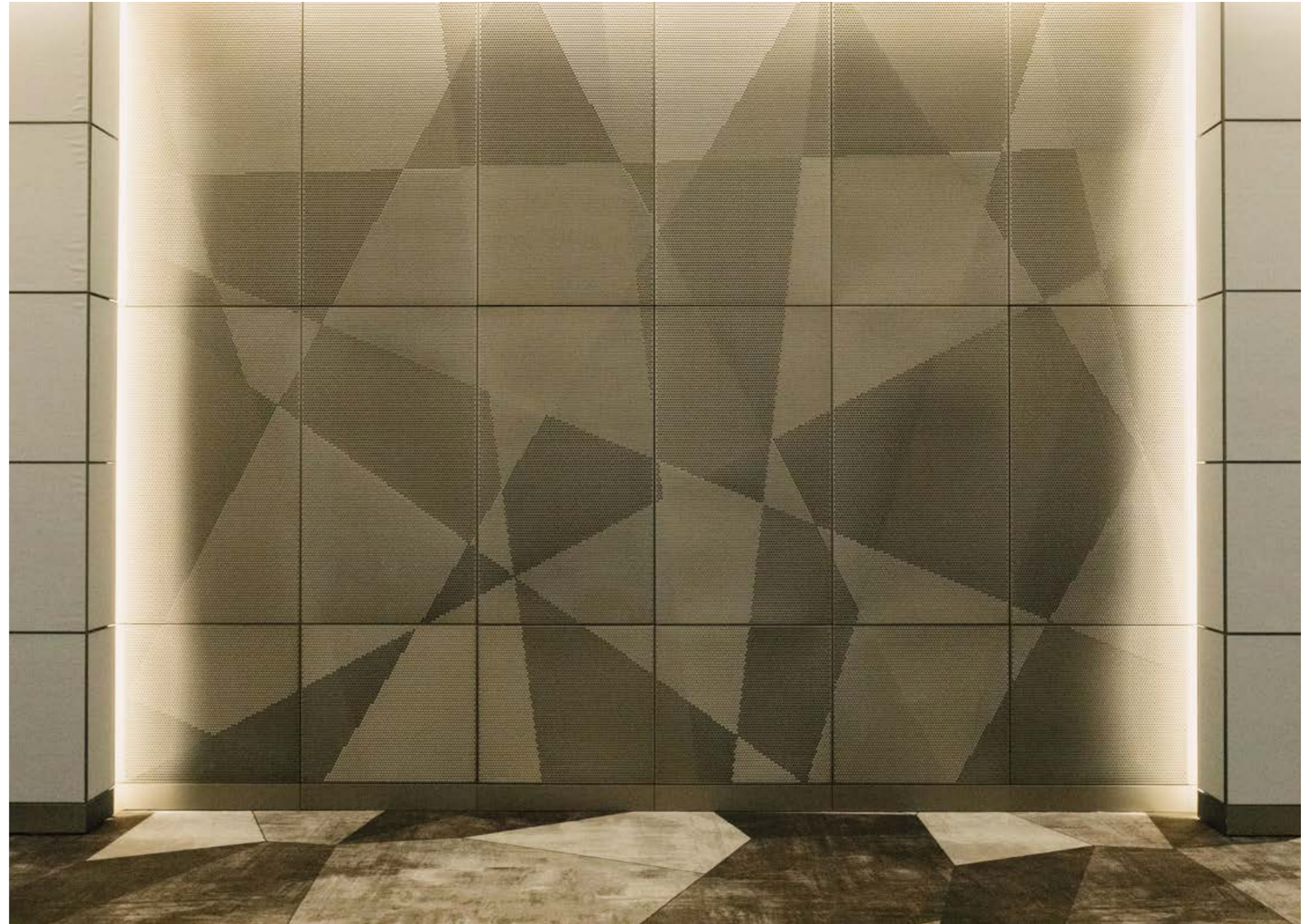
Generous geometry

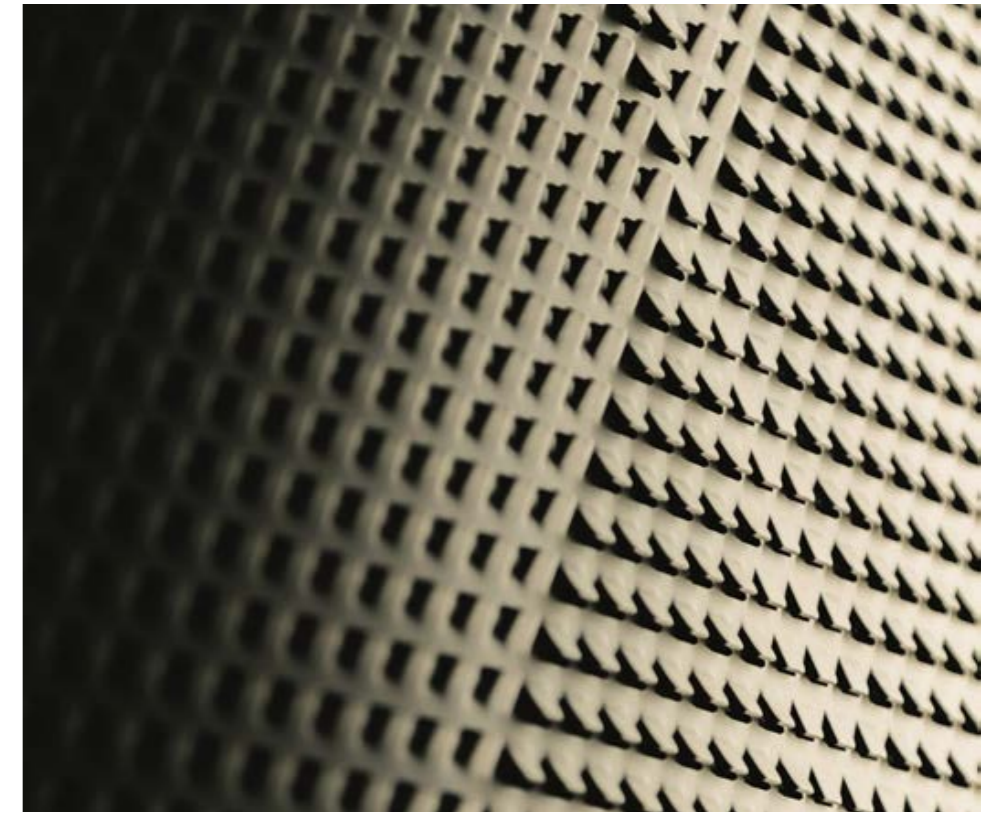
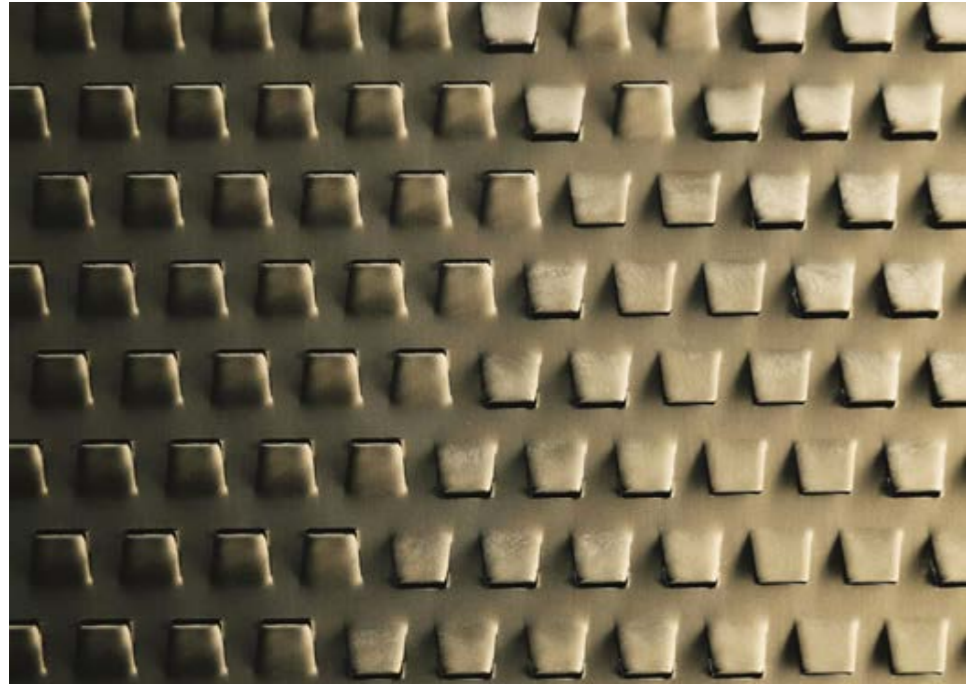
This artwork has a dual impact, reading as large panels at a distance and small pixels at close proximity.

Its purity draws people to touch the surface's fractal tactility.

As a continuation of the floor's geometric patterning, it appears to grow up the wall, echoing the behaviour of light-seeking plants.

And its punctuated surface creates the effect of a soft structure that is gentle and light in character to quieten the mind.









Sieve Screens

Iona Cruise Ship - 2019

Gentle partitions

Delicate, leaf-like forms seem to float effortlessly in midair, their graceful curves sweeping across two levels of the ship's expansive dining area.

These screens weave seamlessly through the tables, offering an elegant balance between privacy and openness.

Providing subtle intimacy without obstructing the panoramic views, the interplay of light and shadow on the suspended elements creates a dynamic visual experience.



9 Millbank

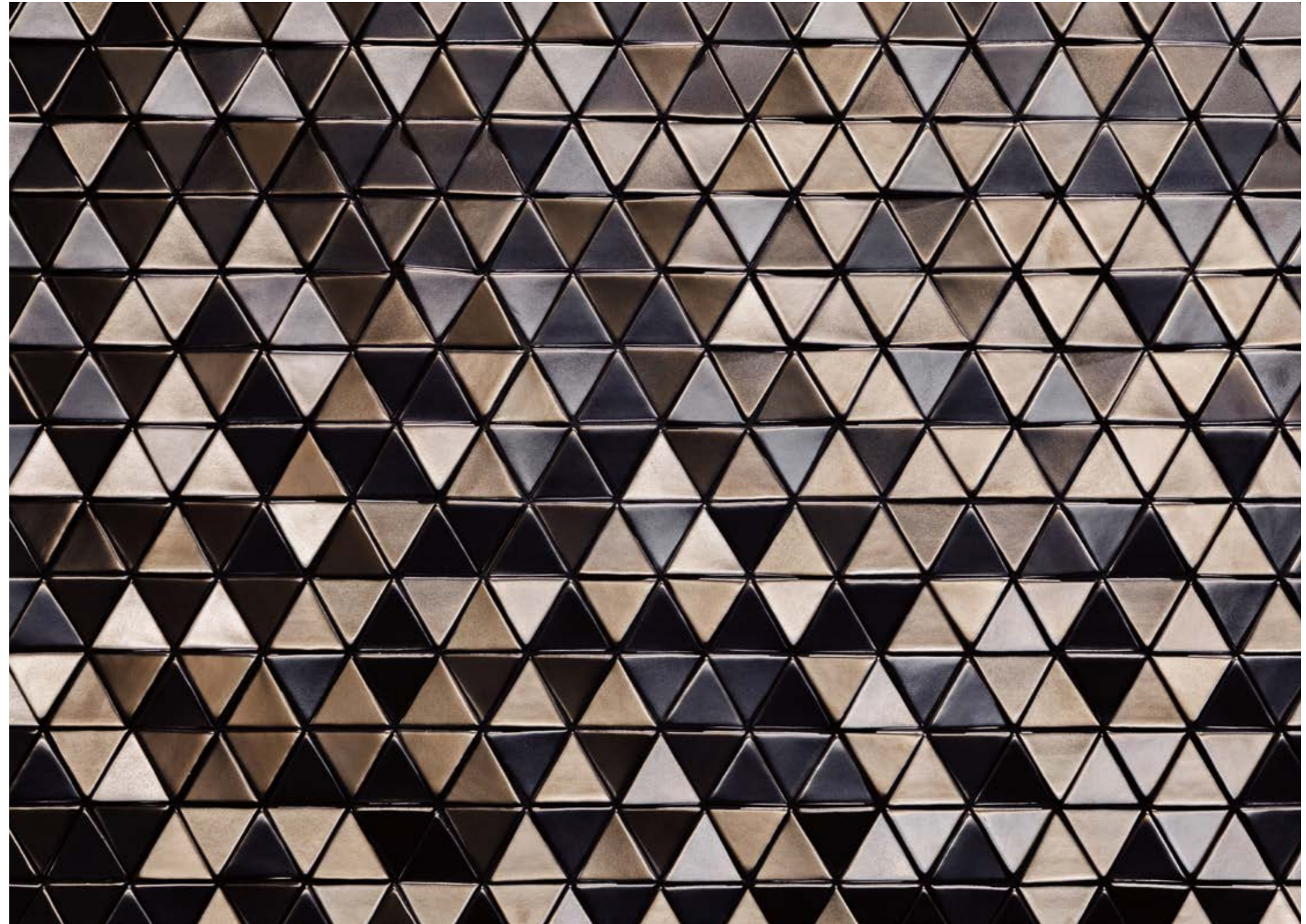
London, United Kingdom - 2021

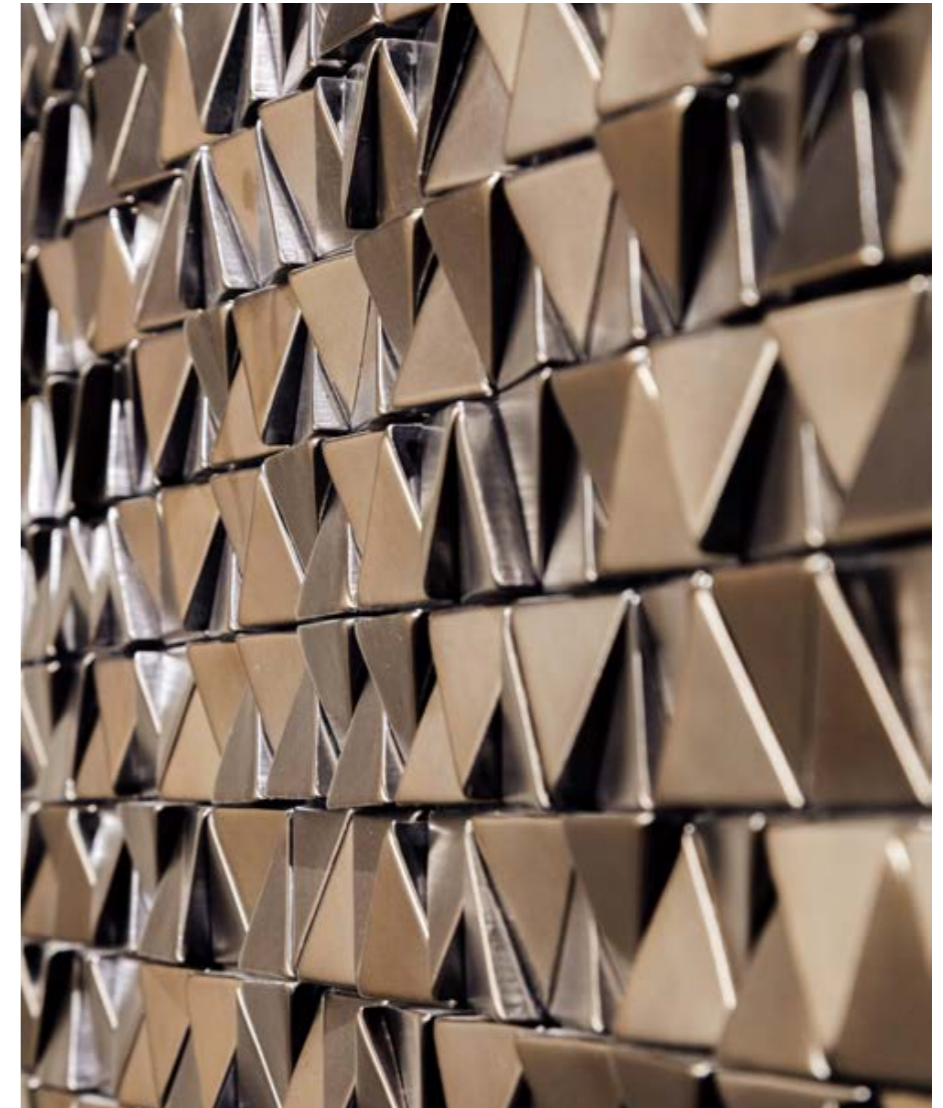
Radiant geometry

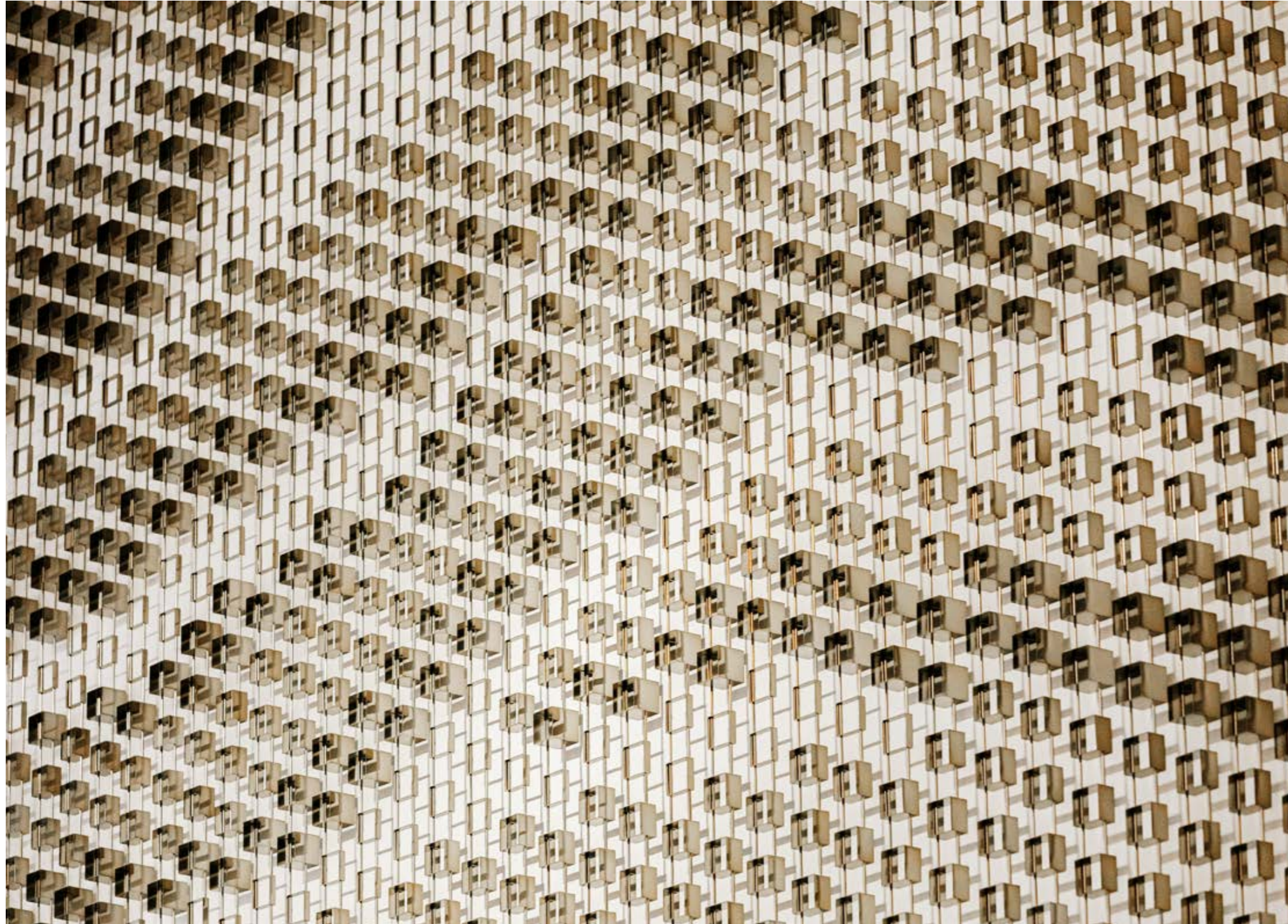
Hand-glazed ceramic 'Marsden' tiles adorn the reception of this prestigious residential development in Westminster, creating a rich display of textures for the eyes.

Shimmering forms reflect a plethora of light back into the lobby, becoming a captivating focal point upon entry.

Geometric shapes tessellate, adding a dynamic rhythm to the otherwise minimal and monochrome interior.







Drift

Dubai, UAE - 2015

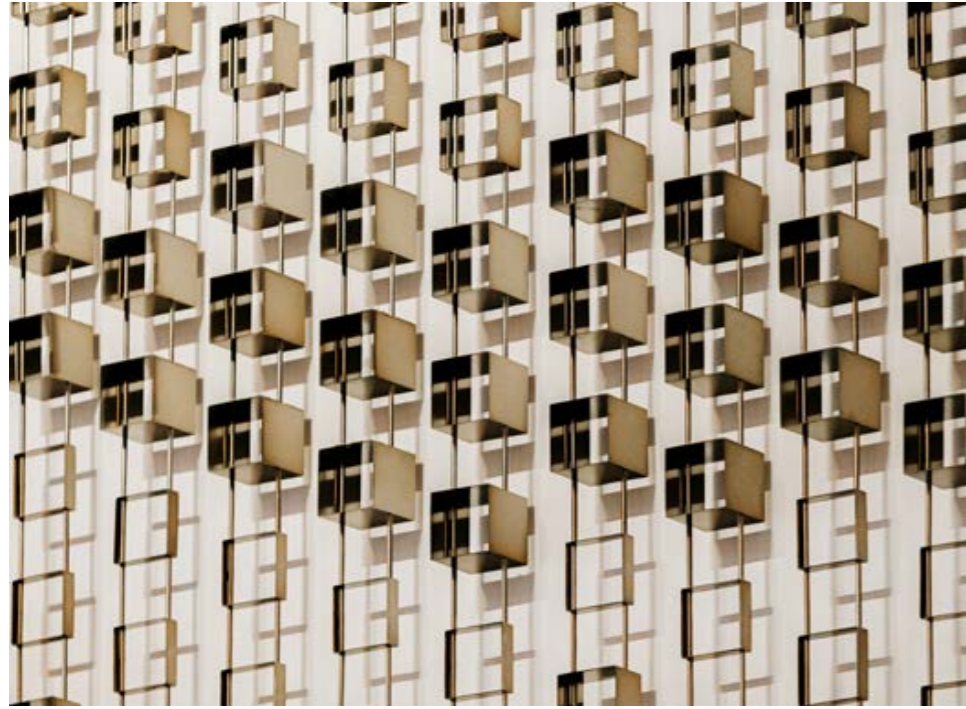
Uplifting texture

A 9m high work comprising thousands of suspended bronze-finish boxes of varying depths inspires awe with its height and fluid beauty.

Its polished surface respectfully reflects people's movements.

Shadows soften the metallic structure and mathematical grid.

And it appears to take energy from the sun as it moves across the space.



Le Lido

Paris, France - 2014

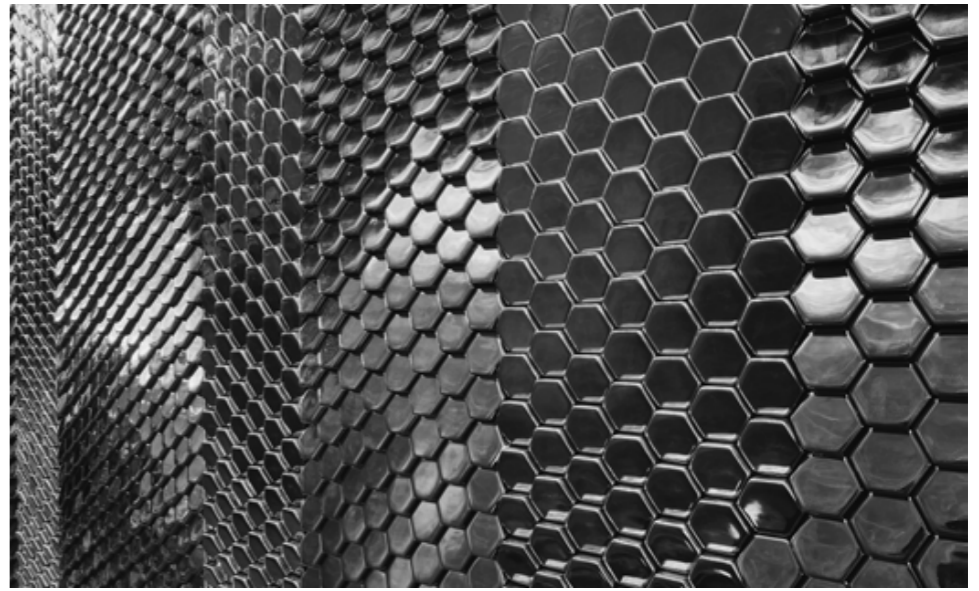
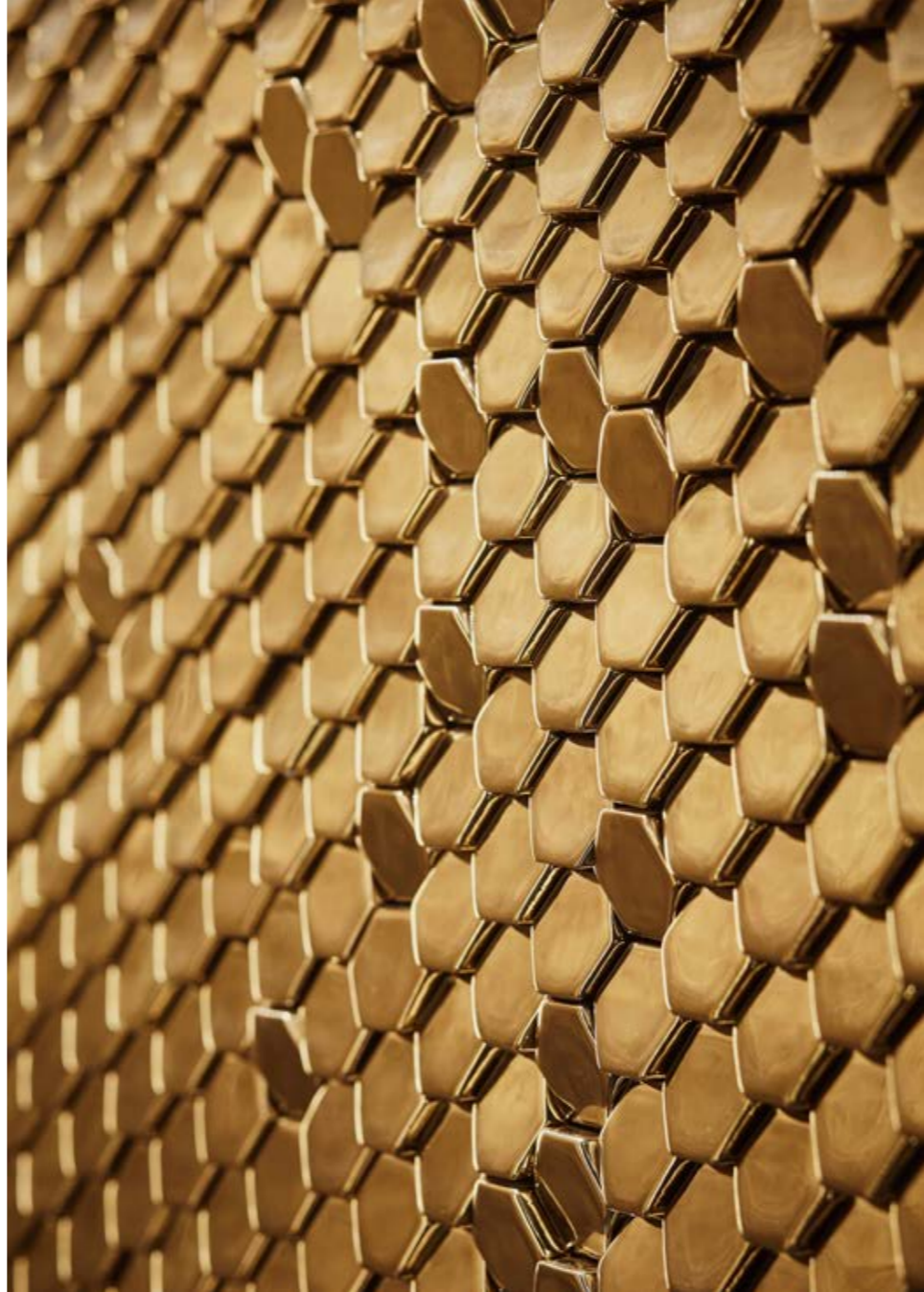
A moment of opulence

An installation which celebrates GMS's ceramic hexagonal tile in its purest form, seamlessly blending with the space to reveal its elegant geometry.

Each tile reflects light and shadow in a dance of texture and form, creating an atmosphere that feels both refined and authentic to the luxurious Parisian venue.

The bold materiality exudes warmth and understated elegance, drawing the viewer's gaze. As you move through the space, letters subtly reveal the venue's name.







The Hub

Oslo, Norway - 2019

A depth to explore

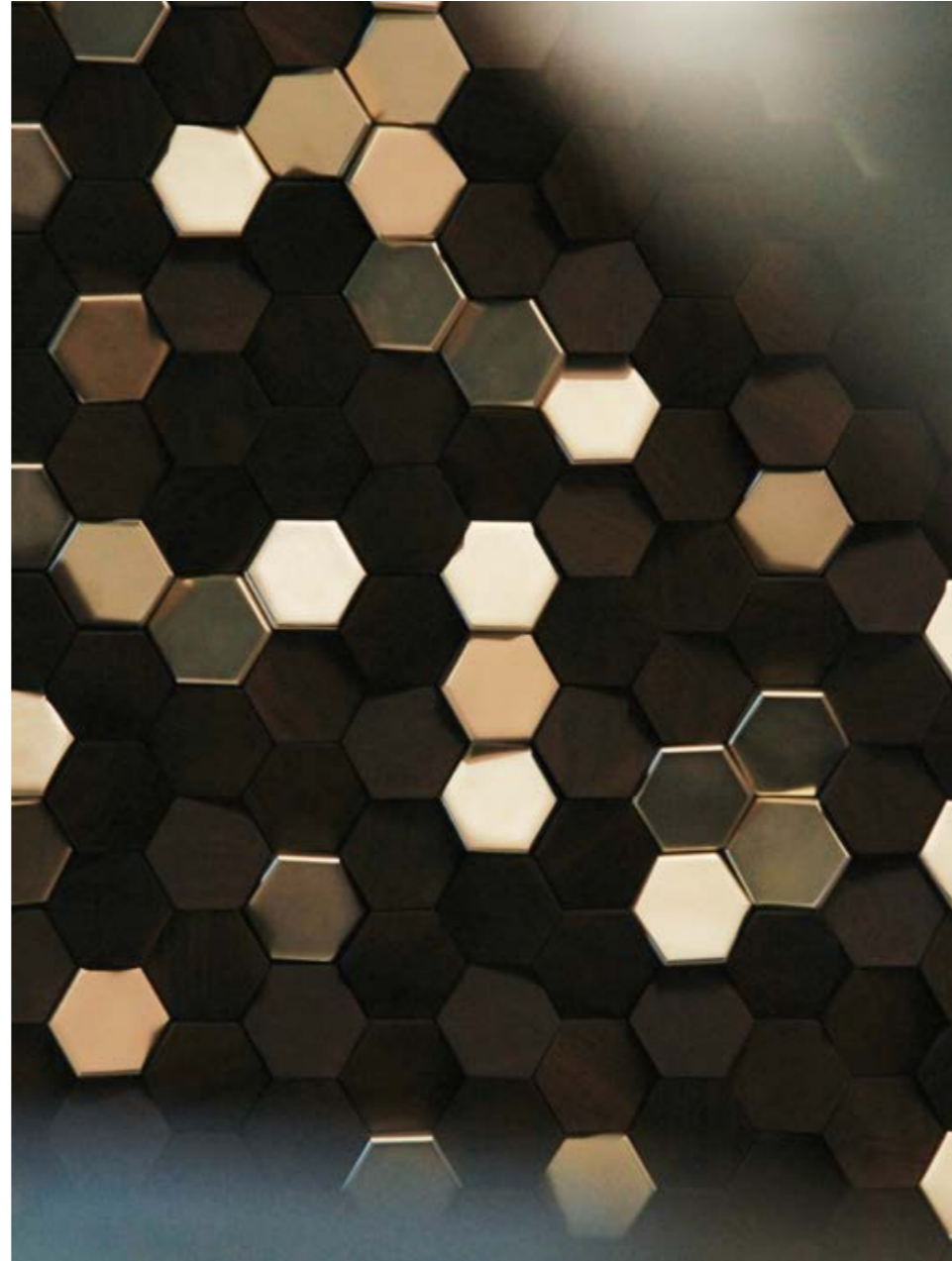
Pleasure-inducing curvature is given centre stage in this reception space in an Oslo hotel.

As a softening presence, it contributes to the hotel's perceived comfort and welcome.

Its star-like, striking gradient of gold set against dark wood in randomised dissipation instils a sense of uplifting limitlessness.

And the biophilic motif of its intricate honeycomb formation promotes calmness of mind.









Flow

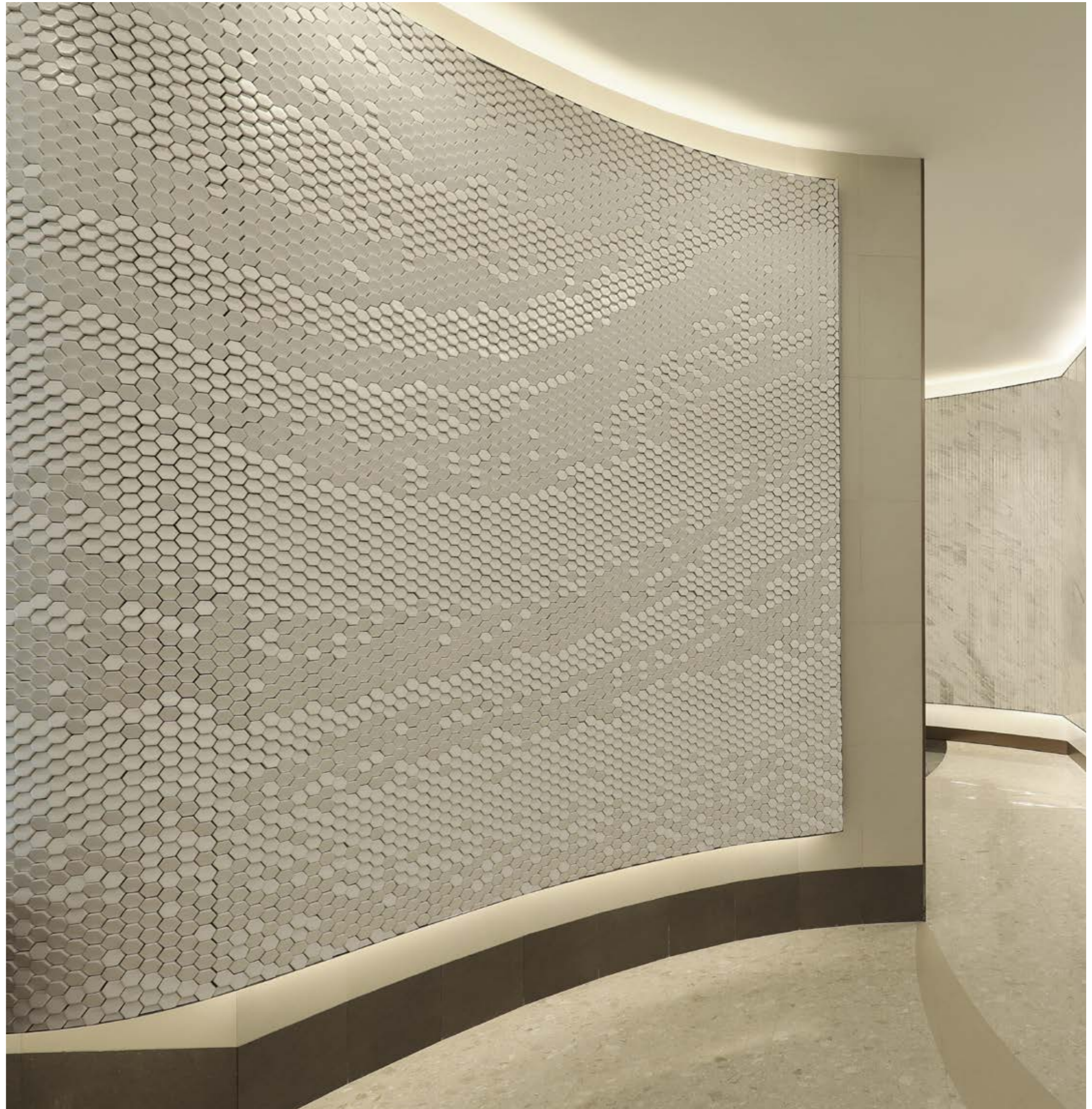
Changi Airport, Singapore - 2016

A brief pause in motion

Airy 'Alexander' tiles are composed in a subtle but texturally intricate flow of tone and shadow.

The Changi Airport installation is inspired by the fluid movement of people through the space, mirroring the constant ebb and flow of travellers.

The piece evokes the seamless journey of passengers, guiding them visually and symbolically through their own travel experiences, while blending art with the functional rhythm of the terminal's architecture.





Union

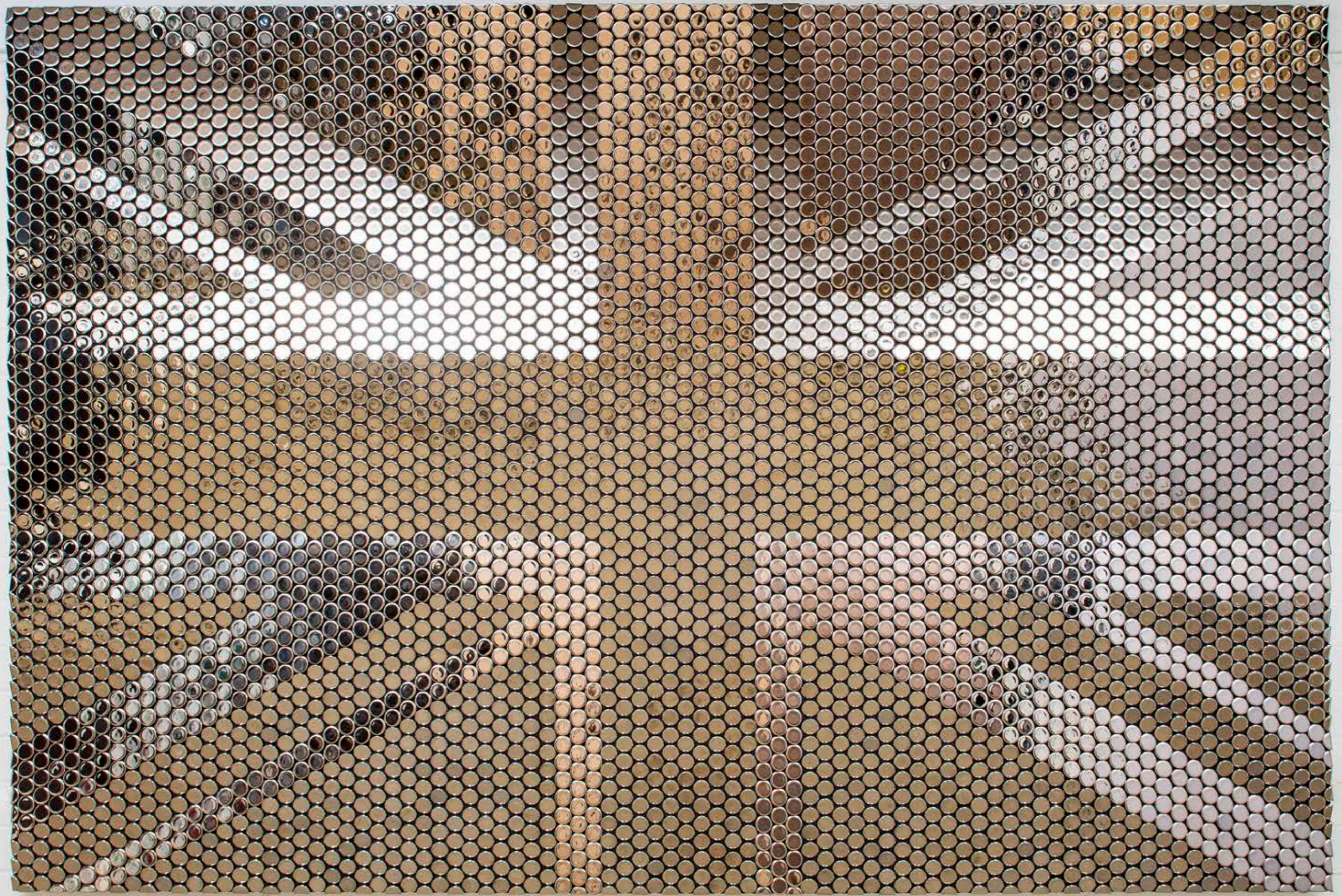
Great Festival of Innovation, Hong Kong - 2018

Shifting national image

Union, a beguiling interpretation of the Union Flag, is composed of hundreds of reflective ceramic 'pennies,' each meticulously angled to interact with light and its surroundings.

The result is a dynamic surface that captures the essence of the flag's tones, shifting and evolving as the viewer moves around it, creating a dialogue between material and environment.

Originally commissioned by the UK Department of Trade, the piece has toured internationally, embodying the studio's fascination with material behaviour and reflective interaction on a global stage.



Butlers Chocolate Cafe

Dublin Airport, Ireland - 2014

An injection of warmth

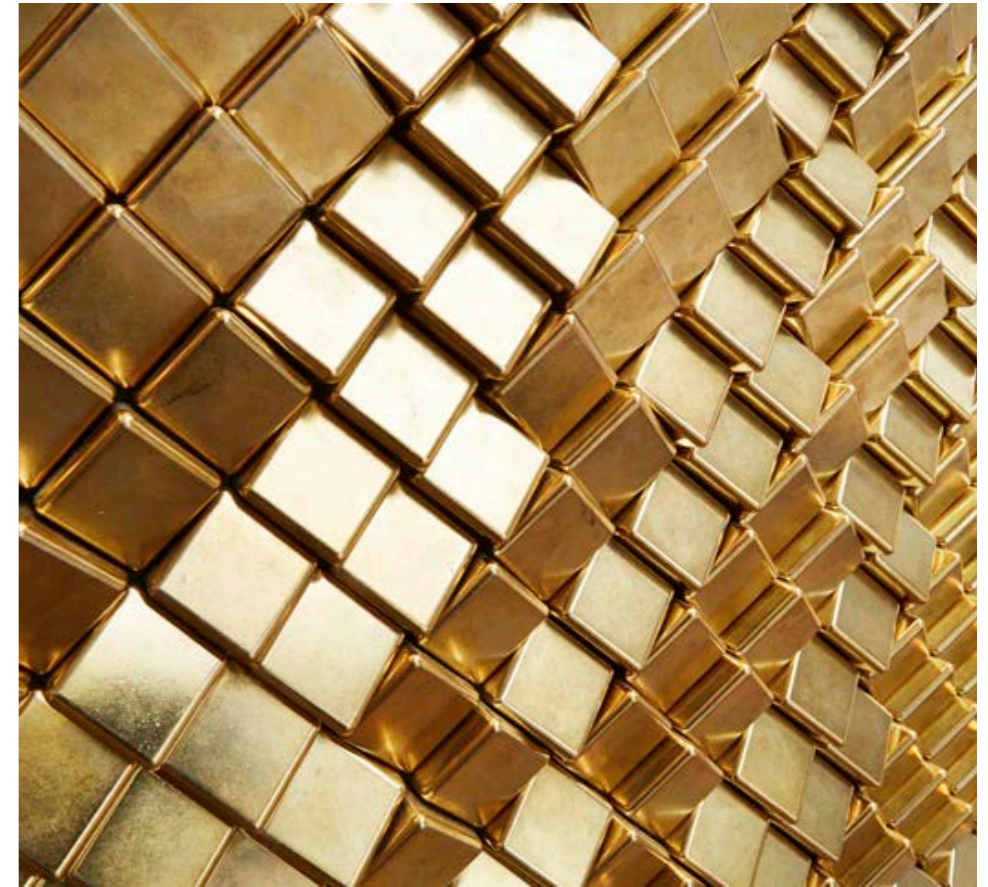
In the sterility of the airport environment, this richly textured artwork creates a welcome visual inspiration.

Its mellow-toned metallic finish reflects light into the space.

The chocolate-like tiles offer a playful and elevating extension of the product.

And the sense of movement in its flowing form and irregular patterning brings calm to the frenetic environment.





Butlers Chocolates



Hot Chocolates		Cold Drinks	
Hot Chocolate	2.40	Hot Latte	2.80
Dark Hot Chocolate	2.40	Hot Chocolate	2.80
White Hot Chocolate	2.40	Hot Mocha	2.80
Milk Hot Chocolate	2.40	Hot Tea	2.80
Hot Caramel Chocolate	2.80	Hot Caramel Mocha	3.80
Hot Raspberry Hot Chocolate	2.80	Ice Cream	
Hot Vanilla Hot Chocolate	2.80	Vanilla Sundae	3.80
Hot Peppermint Hot Chocolate	2.80	Strawberry Sundae	4.80
Hot Mint Hot Chocolate	2.80	Hot Mocha	3.80
Hot Orange Hot Chocolate	2.80	Hot Mocha	3.80
Hot Lemon Hot Chocolate	2.80	Hot Mocha	3.80
Hot Berry Hot Chocolate	2.80	Hot Mocha	3.80
Hot Honey Hot Chocolate	2.80	Hot Mocha	3.80

Free Wi-Fi

glass hut

sunglass

Level Shoe District

Dubai, UAE - 2013

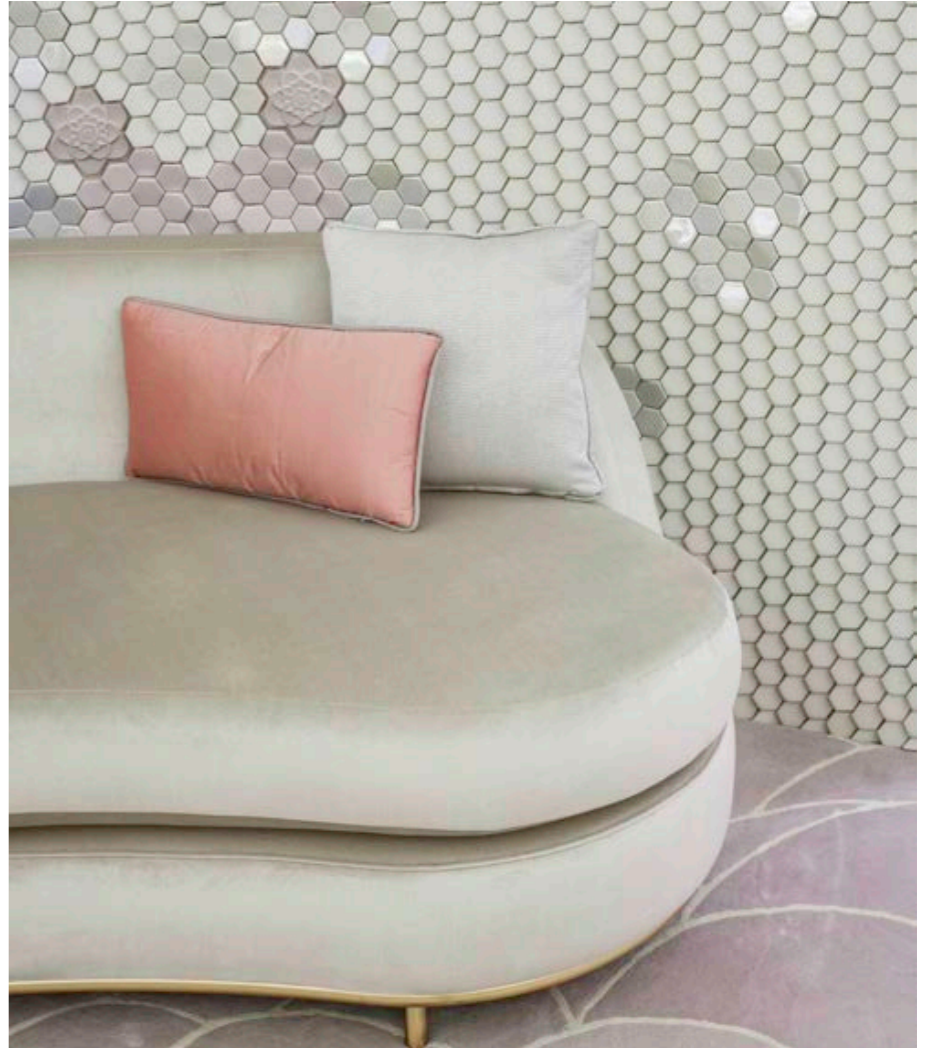
Floral harmony

This composition features intricately arranged tiles in floral formations, utilising a variety of soft ceramic finishes to bring texture and depth to the space.

Inspired by principles of biophilic design, the mural evokes a connection to nature, with organic patterns and materials that enhance the well-being of those within the environment.

The blooms create a serene, tactile experience, seamlessly blending art and architecture in this luxurious setting.





Stella McCartney

London, United Kingdom (Selfridges) - 2011

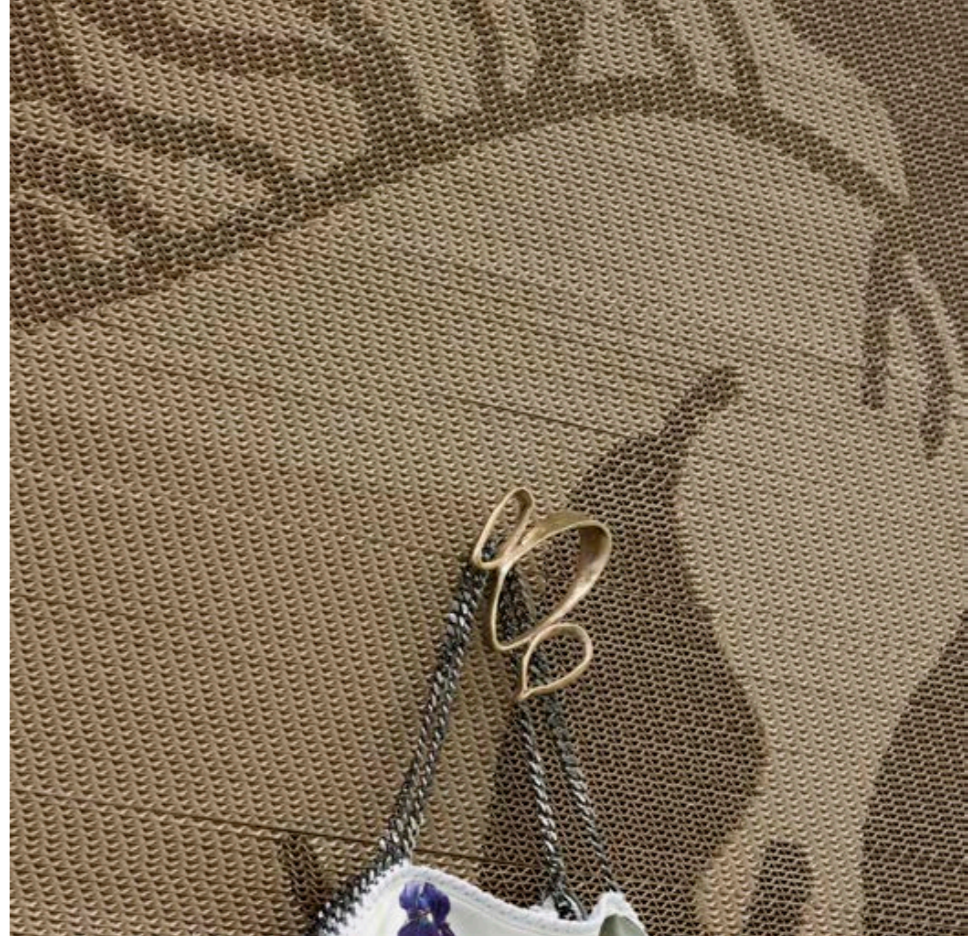
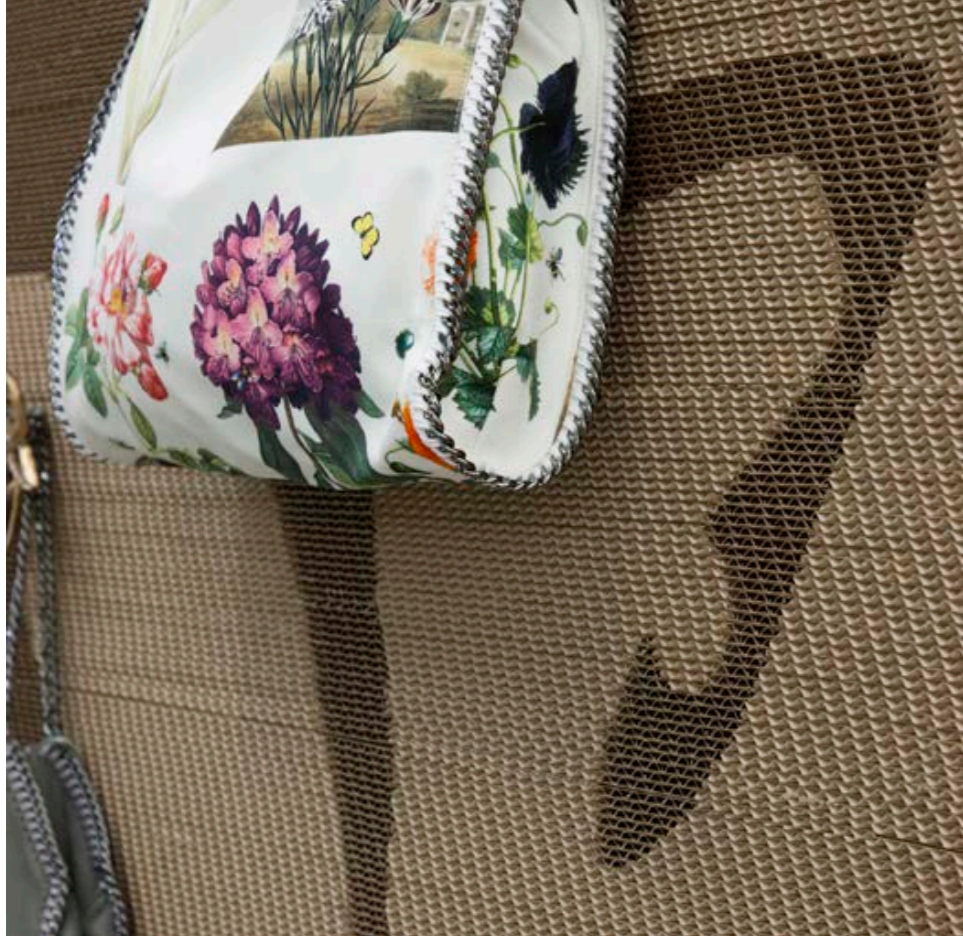
Sustainable spaces

Cardboard, a sustainable and recyclable material, was carefully selected for its eco-friendly properties, revealing the material's potential to transform space through simplicity and texture.

A wide range of retail and branding projects reflect the shared commitment to sustainability between the studio and Stella McCartney.

Each artwork blends craftsmanship and innovation, which became a pivotal turning point for GMS.







Yas Mall

Abu Dhabi, UAE - 2013

Blossoming geometry

Drawing inspiration from biophilic design, abstract triangular forms echo the geometry of floral patterns, creating a subtle connection to the natural world.

The play of light across the mirrored surfaces further enhances this organic flow, bringing depth and vitality to the space.



Clerkenwell Archway

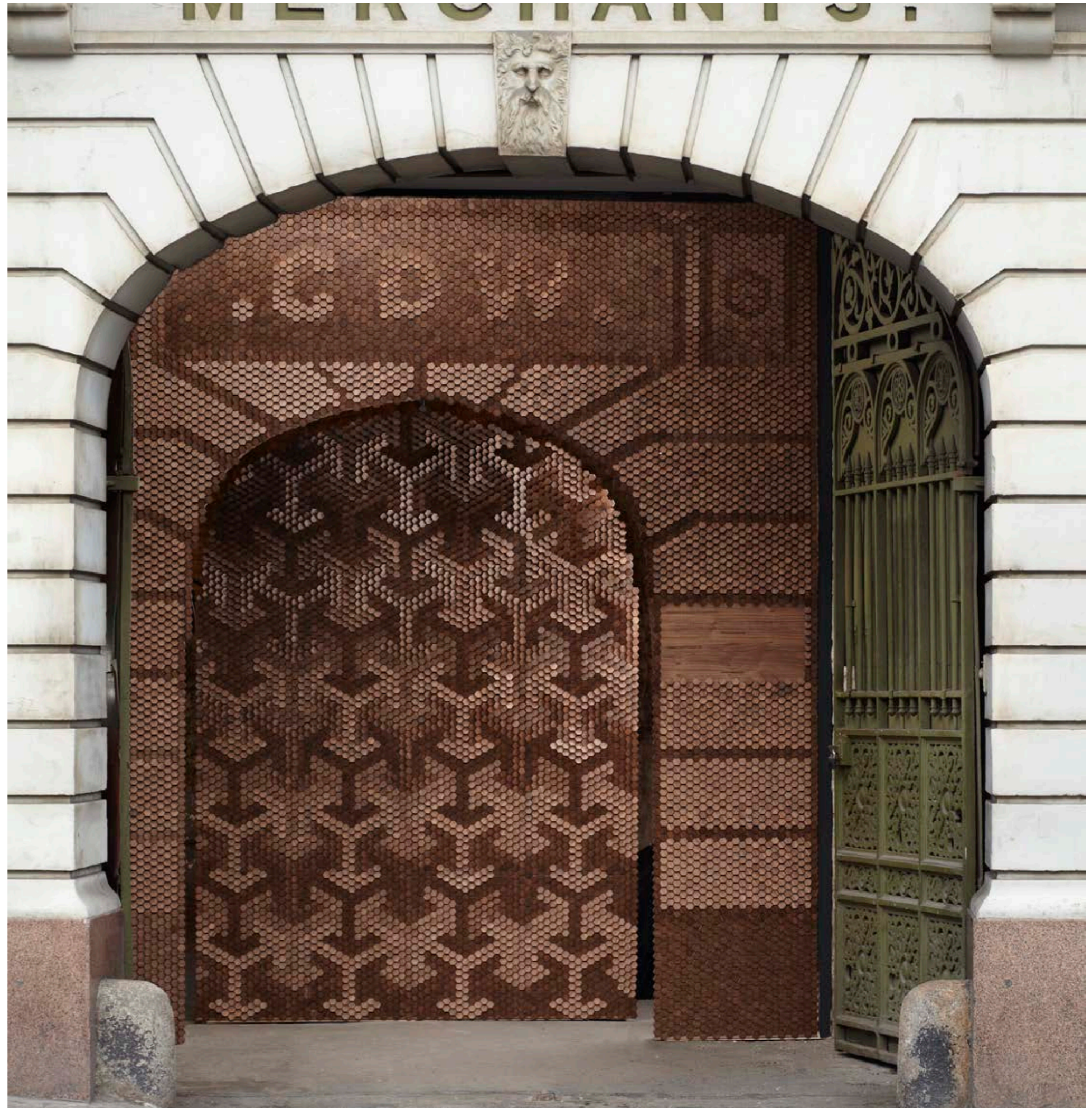
London, United Kingdom - 2012

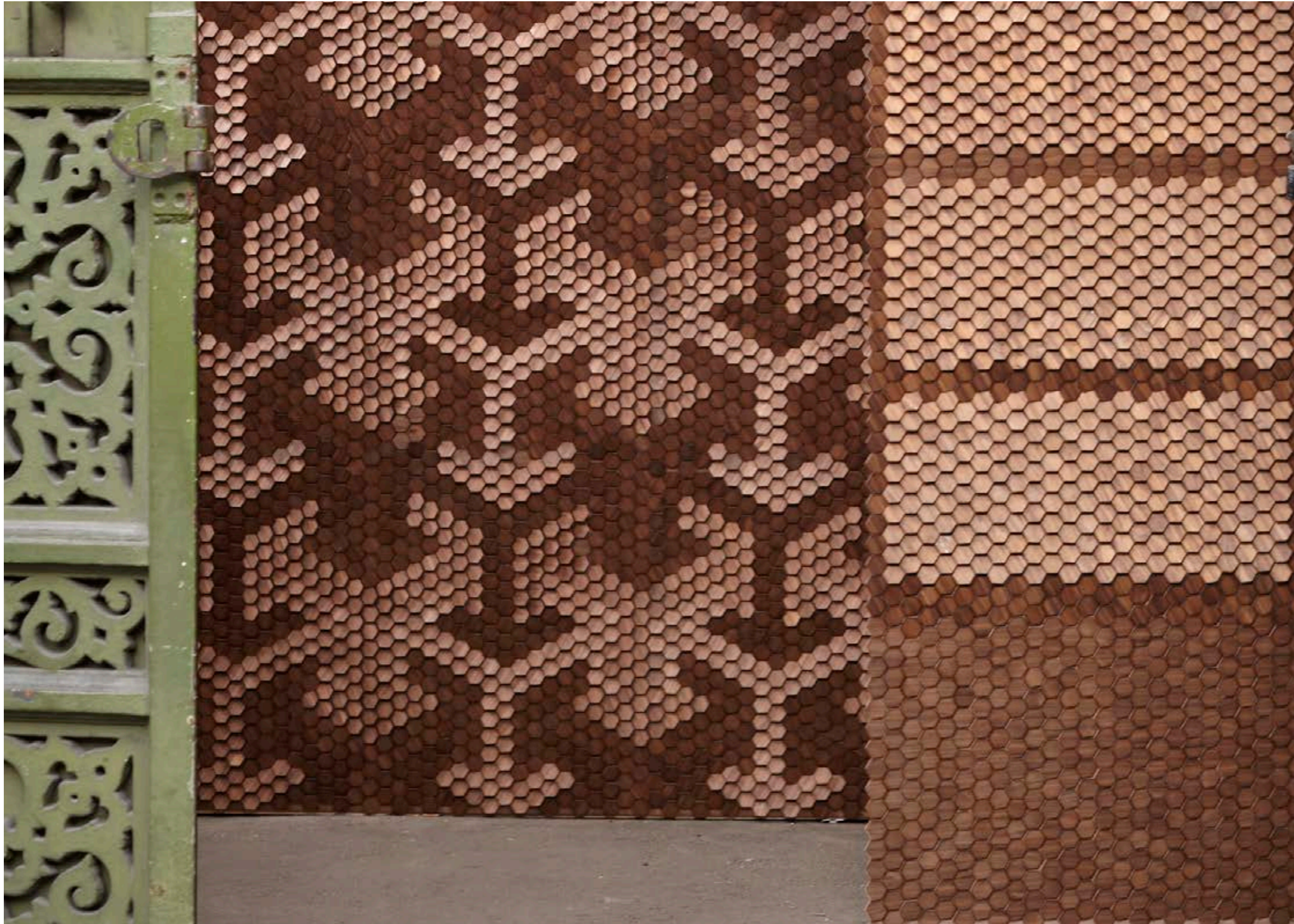
A punctuation in history

Nestled within the historic concrete arches of the 150 year old Farmiloe Building, the Clerkenwell Archway formed a seamless dialogue between past and present.

Inspired by the Japanese concept of *shitsukan*—the perception of material qualities—the use of timber emphasised its natural texture and warmth, enhancing the sensory experience of the space.

The interplay of light and shadow across the angled surfaces brought the material to life, creating a tactile, immersive gateway to the design festival.





Surface Pricing

Ceramic - matt/gloss finishes

Timber - matt lacquer coated

Eco Range - coffee, hemp, tobacco, wine

£1700 per m2

Ceramic - crackle metallic finishes

£2100 per m2

Ceramic - high gloss/matt metallic finishes

Cast metal - plated or powder coated finishes

£2300 per m2

Half tiles are generally required in order to create straight lined-edges for our surface artworks.

The four longest edges are included in the above per m2 pricing. Additional edges are charged at £150 per linear meter.

Projects using mixed materials/finishes carry a 15% surcharge.

Projects under 10m2 carry a variable% surcharge, dependent on project specifics.

Prices are exclusive of VAT (where applicable), packaging and delivery.

Specialist Commissions

Due to the bespoke nature of some of our surfaces (such as *Sieve*, *Drift* and *Wing*), these specialist commissioned projects are priced individually. Please contact the studio for more information.



Giles Miller Studio

+44 (0) 20 7293 0253
enquiries@gilesmiller.com
gilesmiller.com

Sensory Artistry