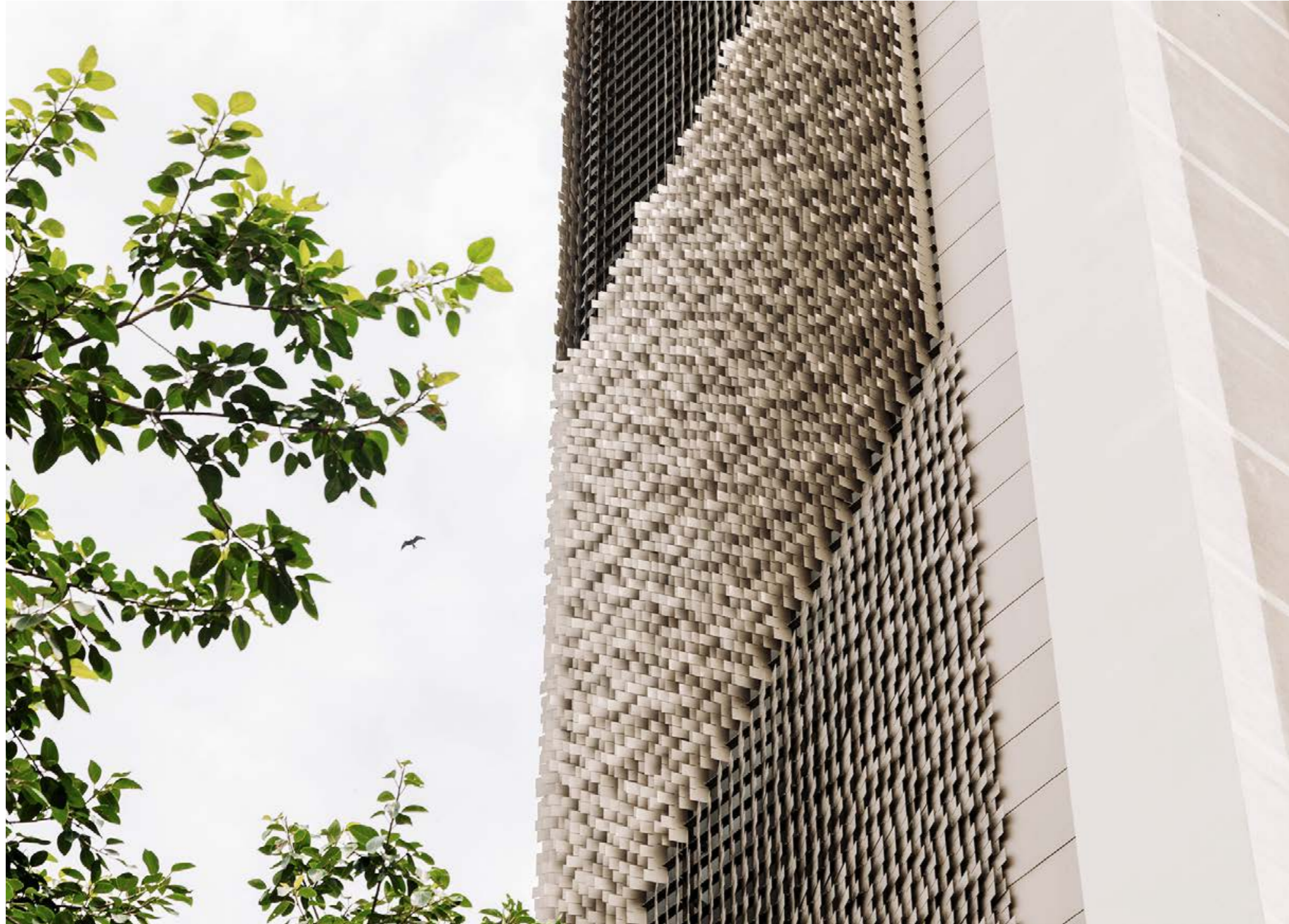


# Giles Miller Studio Structure Portfolio



Sensory Artistry





Our artistic purpose is to benefit the human experience.

Neuroscience has proven art's ability to promote wellbeing. It validates our purpose.

Art communicates with and unites our senses. It has the power to make us feel pleasure, awe, comfort, serenity, and excitement.

It's a power we study, channel, and perpetuate.

We call it sensory artistry.

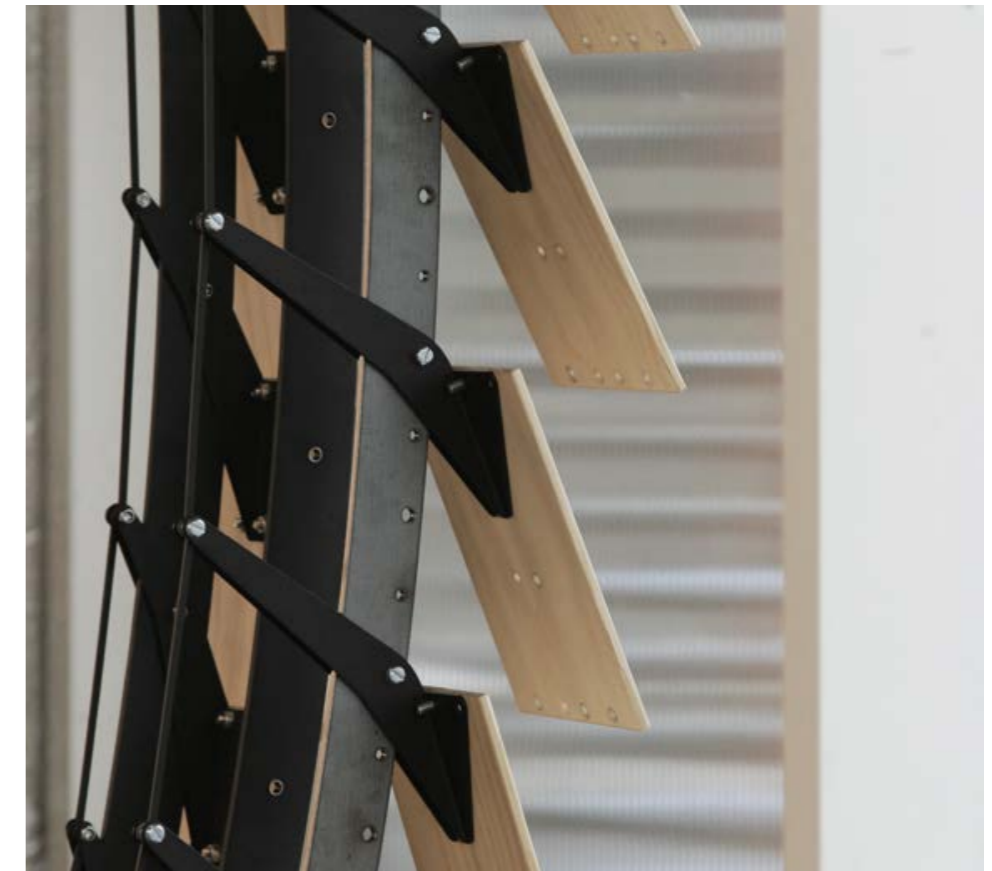






Giles Miller Studio creates large scale architectural facades and pavilions that benefit people beyond the aesthetic.

The studio's unique approach employs textures, colours and forms that create immersive sensory experiences that uplift. The studio is looking to question how spaces are defined and change the way people experience them for the better.







“It’s a kind of magic... spellbinding play between materials and light”

Nook magazine







## Woven

Broadstairs, United Kingdom - 2023

*A rare reality*

This architectural piece opens up a boundless connection with nature.

As a habitable work, it offers ultimate interactivity with art as well as nature.

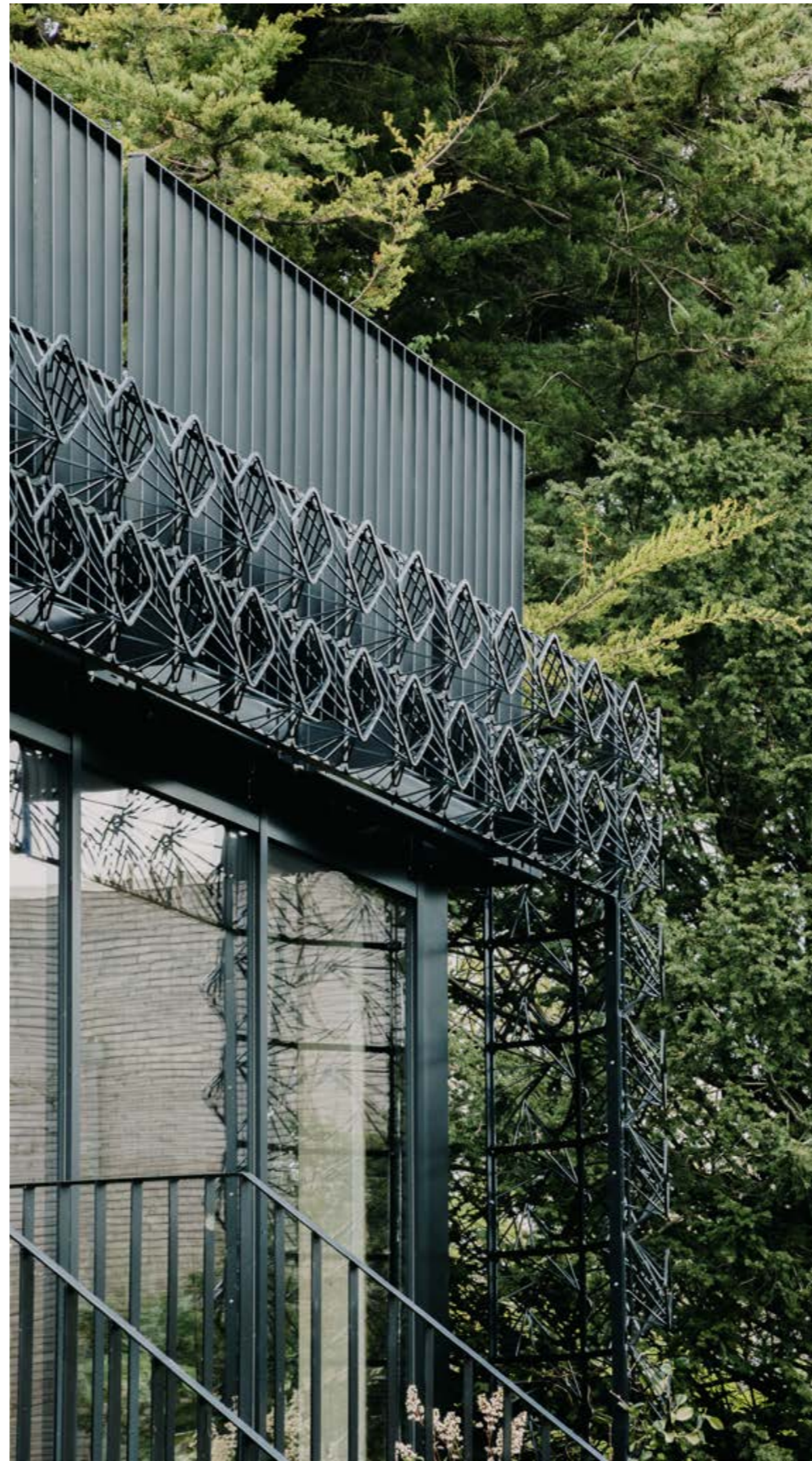
An intensely biophilic view from inside through its largely glass exterior promotes the health, productivity, and overall wellbeing of its residents and visitors.

Curved forms in its structure help the building commune with the verdant glade in which it sits.

And light falls in calming dapples and spots throughout the rooms, its glare filtered and shaped by climbing plants enveloping the sculptural facade.















## Yah Jagah Hai This Is The Place

Mumbai, India - 2022

*Softness at scale*

Encasing and rounding off a corner of a skyscraper, this vast artwork is a place-making icon for the city.

It is both strikingly bold and sensitively integrated into the built environment.

The organic, scale-like façade expands the biophilic beauty of nearby trees, imbuing urban chaos with tangible tranquillity.

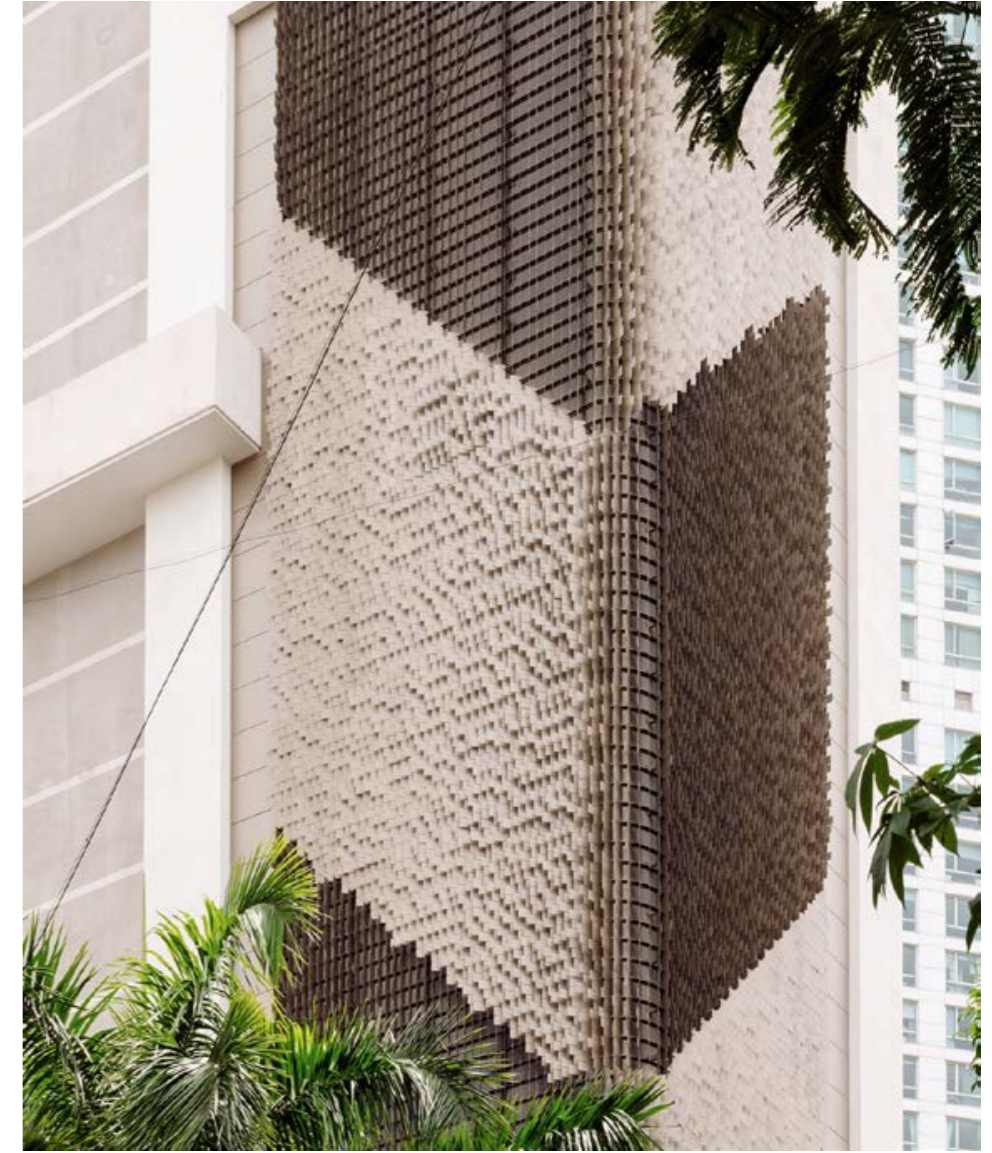
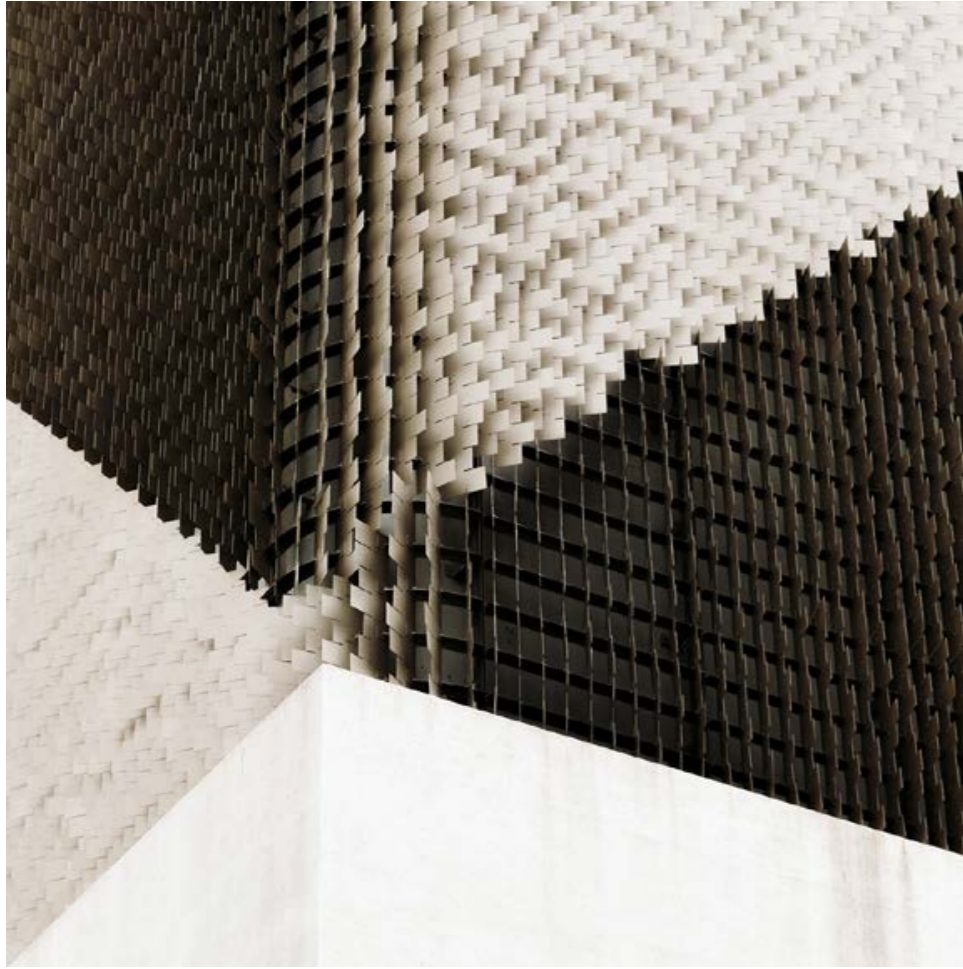
Playing with light, it transitions throughout the day, seeming to reflect the rhythms of Mumbai life.

And the fluency of its repeat patterning reduces stress by creating a sense of order that provides respite in an otherwise cluttered, disjointed atmosphere.















## BBC Pavilion

Cannes, France - 2019

*Communing with nature*

Kinetic abilities open this structure to the sea's wonder, adding a playful, performative dimension.

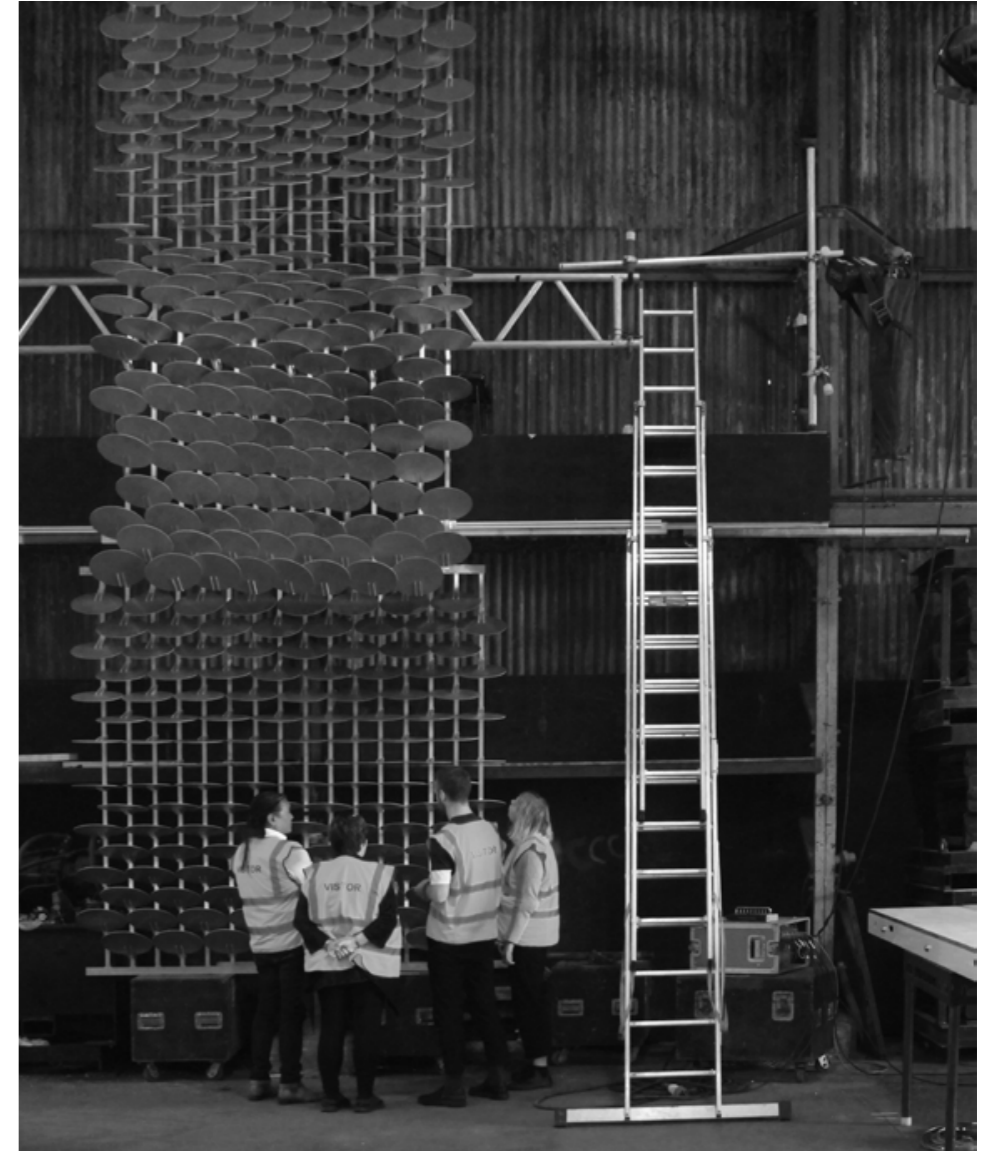
The curvature of the façade's water-like undulations gives the structure an inherently welcoming demeanour.

Its shimmering raw aluminium finish and the direction of its scale-like surface pixels recall teeming shoals of fish.

And it is designed to be dismantled and rebuilt, making it destined to reach and enhance more lives.





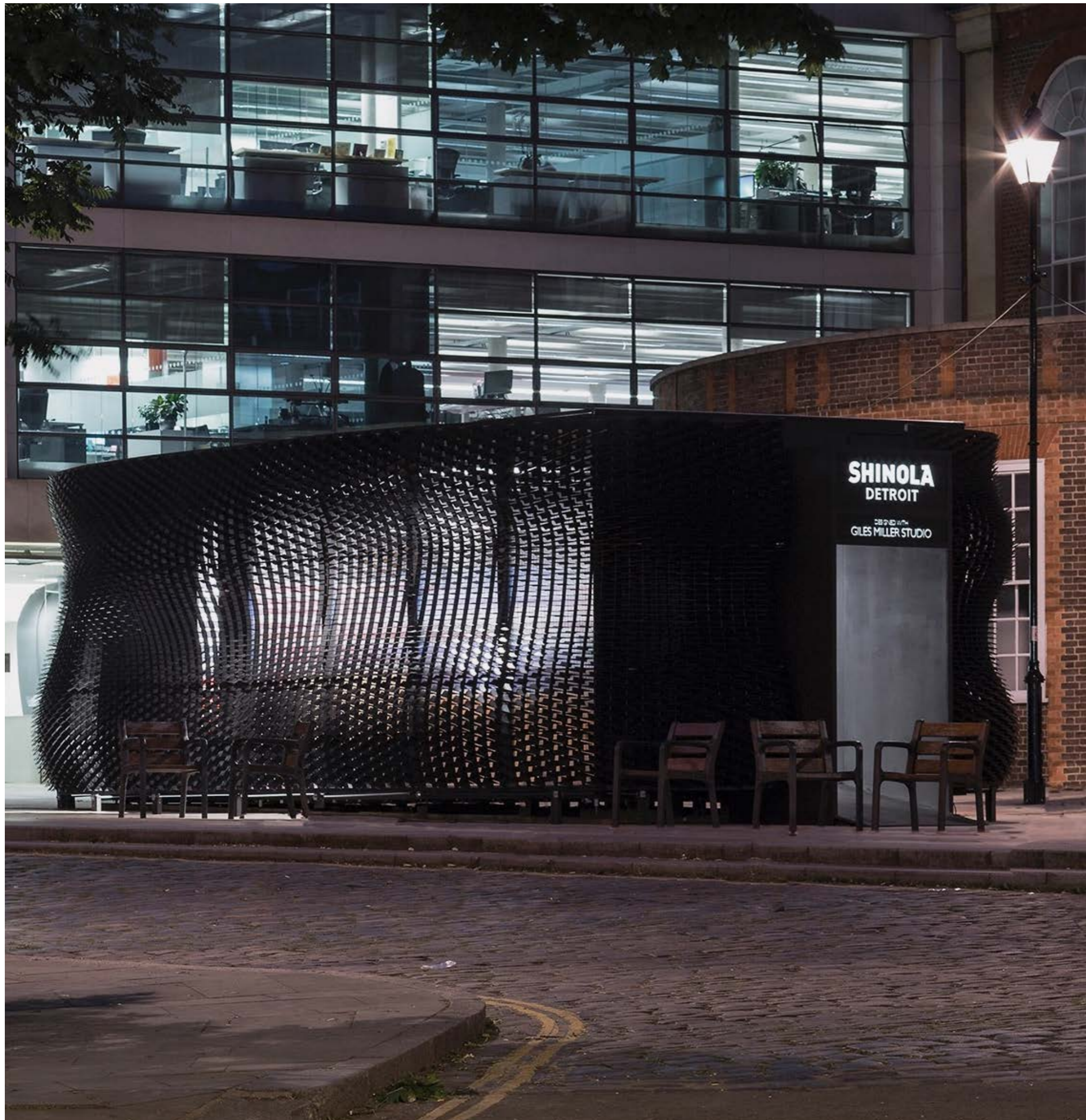






BIBC  
STUDIOS





## The Bolt

London, United Kingdom - 2017

*An otherworldly presence*

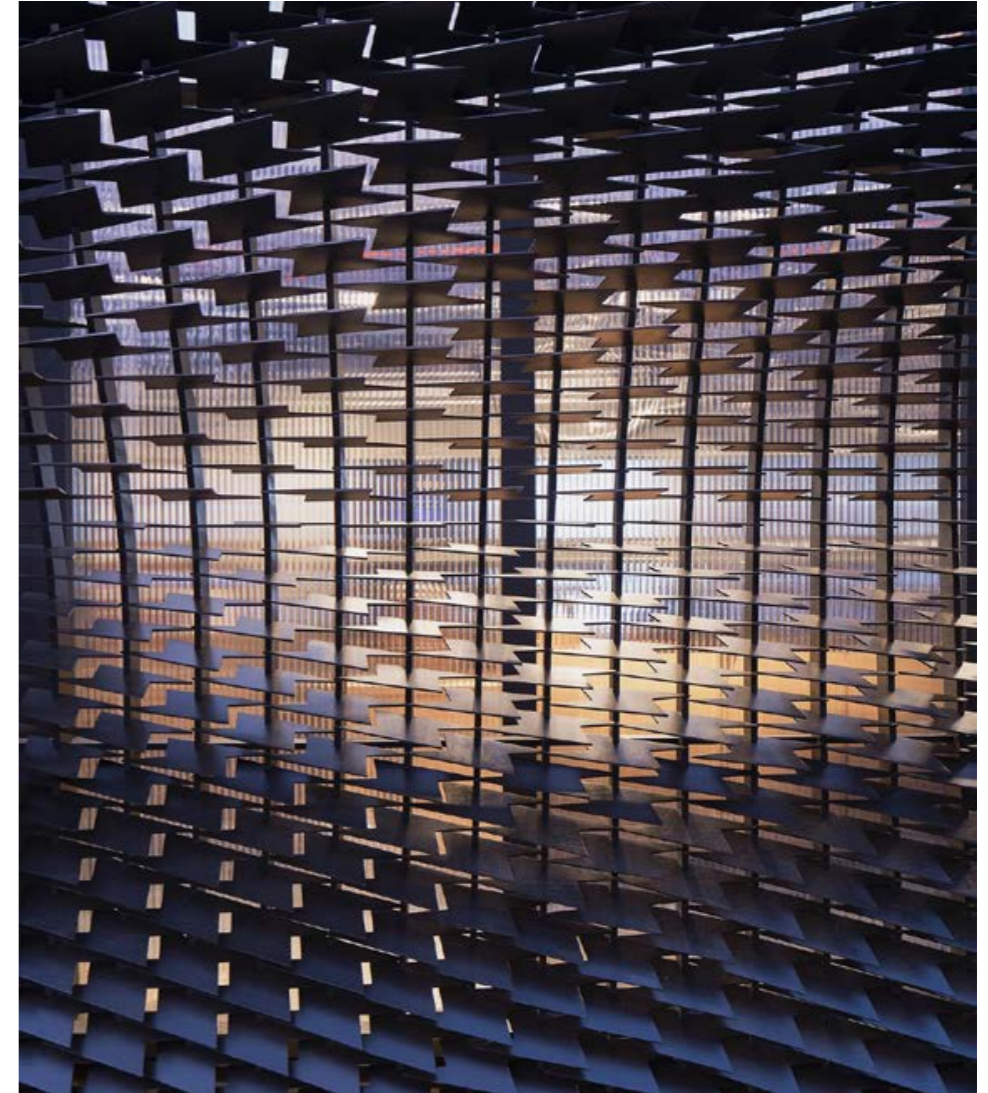
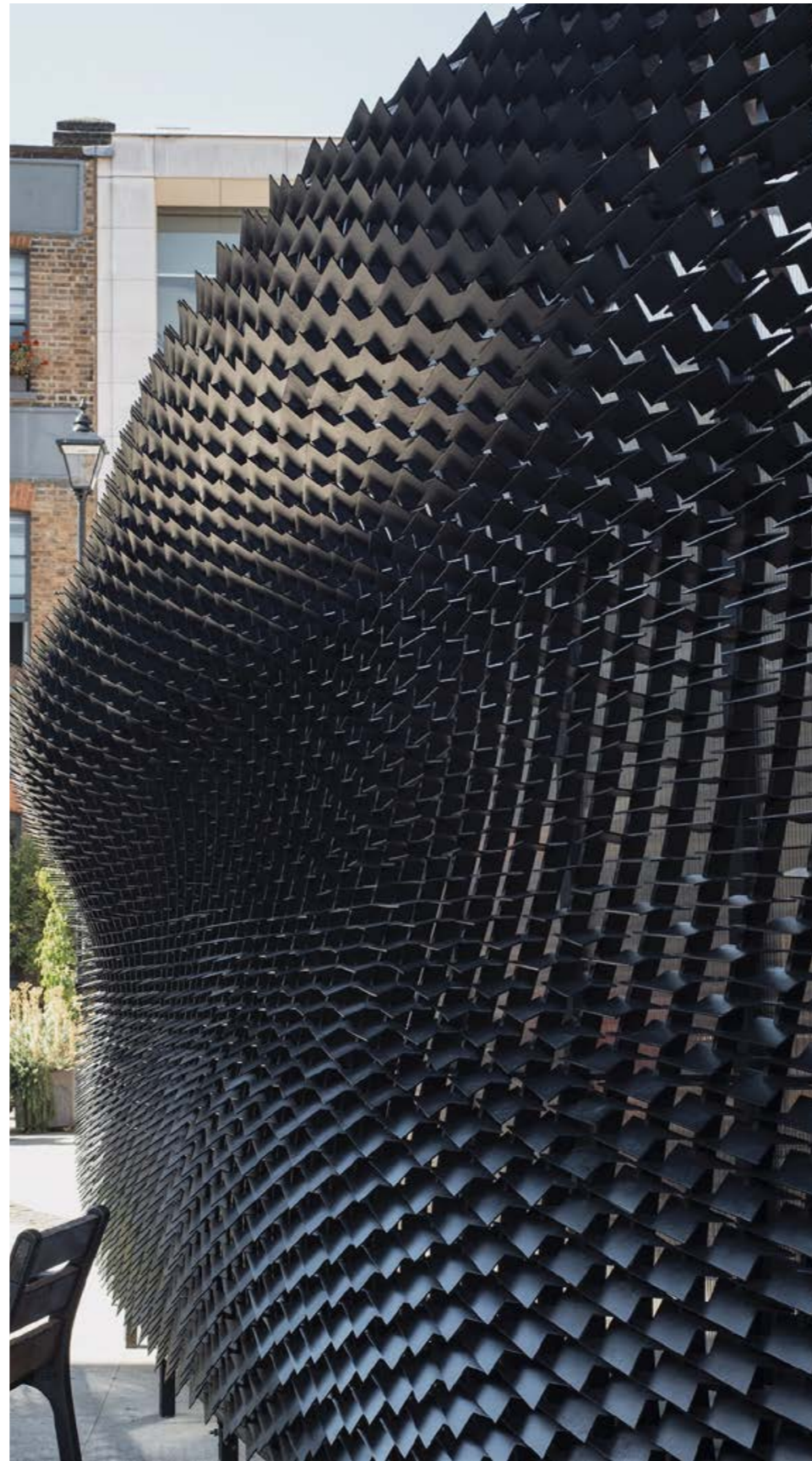
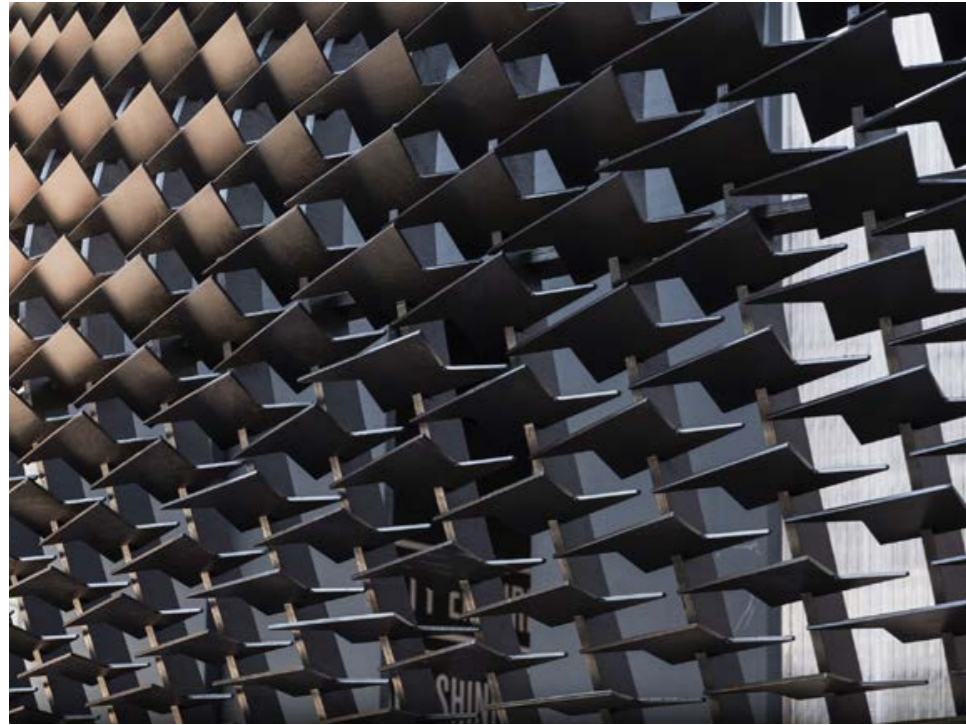
Taking inspiration from the aesthetic of twisted leather, the façade of this piece is formed of neoteric louvre pixels.

These pixels are angled to pique curiosity and invite exploration, offering a glimmer of the space within from a distance and visibility into the space when up close.

Its personable scale and organic, almost amorphous, curved silhouette activate pleasure centres in the brain.

And at night, light is emitted outwards to create an entirely different experience of the piece.







# SHINOLA DETROIT

DESIGNED WITH  
GILES MILLER STUDIO

SHINOLA  
DETROIT

PLANT IT,  
GROW IT,  
BUILD IT,  
WELD IT

#SHINOLACREATIVE





## Perspectives

Surrey, United Kingdom - 2016

### *Mindful by nature*

Above a valley, this large-scale seed pod invites people inside to feel protected from the elements and at one with the woods.

It appears to be in its natural habitat yet surprises those who find it and wordlessly encourages them to rest.

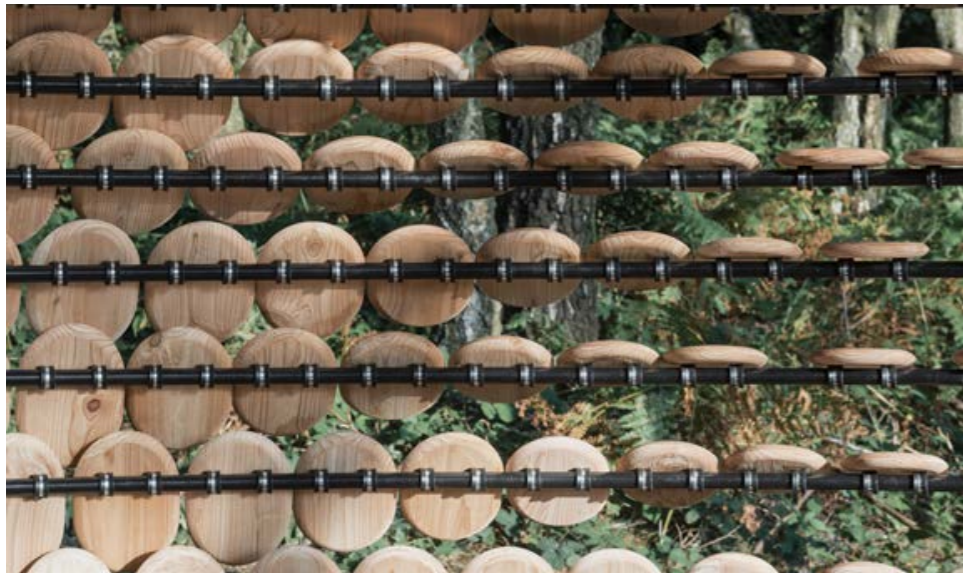
Its cedar construction and overtly organic form feel affectionate.

At its mouth, the overlapping cedar shingles seem to be caught in a breeze, which is liberating in its feel.

And messages inlaid into some of the cedar shingles offer thoughts, pose questions, and suggest feelings to enhance the meaning of time spent in its company.













## Sculptural Landmarks

*Monuments in dialogue with their surroundings*

Three sculptural landmarks to create striking place-markers within an ancient, mountainous landscape.

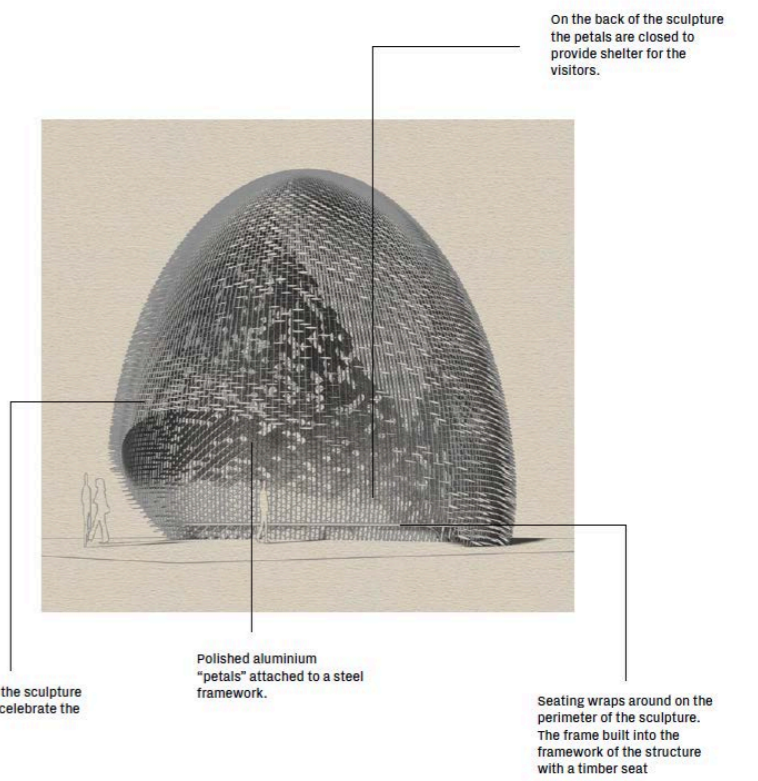
The first structure emerges from the graceful fusion of two adjacent arches, seamlessly joined in an architectural sweep. The region's geological history, shaped by meltwater streams that carved the valleys during the last ice age, inspire the design.

The second landmark takes the form of a vertical ellipse, positioned at the heart of a prominent roundabout. This jagged, towering form pierces the sky, introducing a bold verticality and texture that mark the entrance to the surrounding mountainous terrain. A distant beacon, its organic shape blends naturally with the context and scale of the landscape.

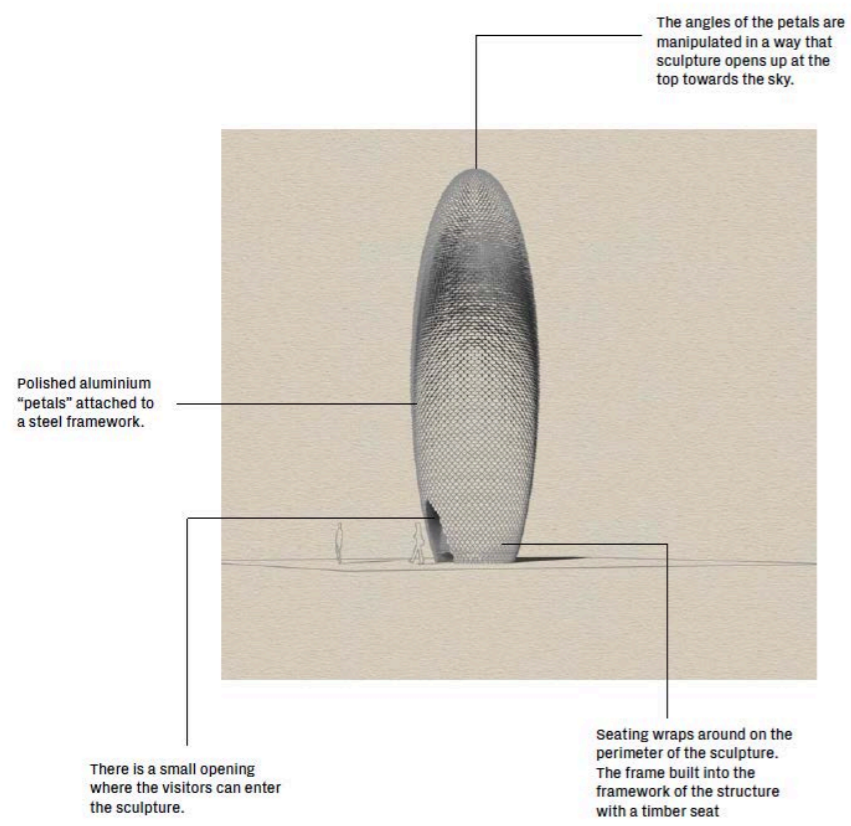
The final sculpture draws inspiration from ancient Rathas discovered nearby. Circular in both structure and social function, the design incorporates perimeter seating and echoes the iron-age forms which give the piece both a structural and cultural resonance.



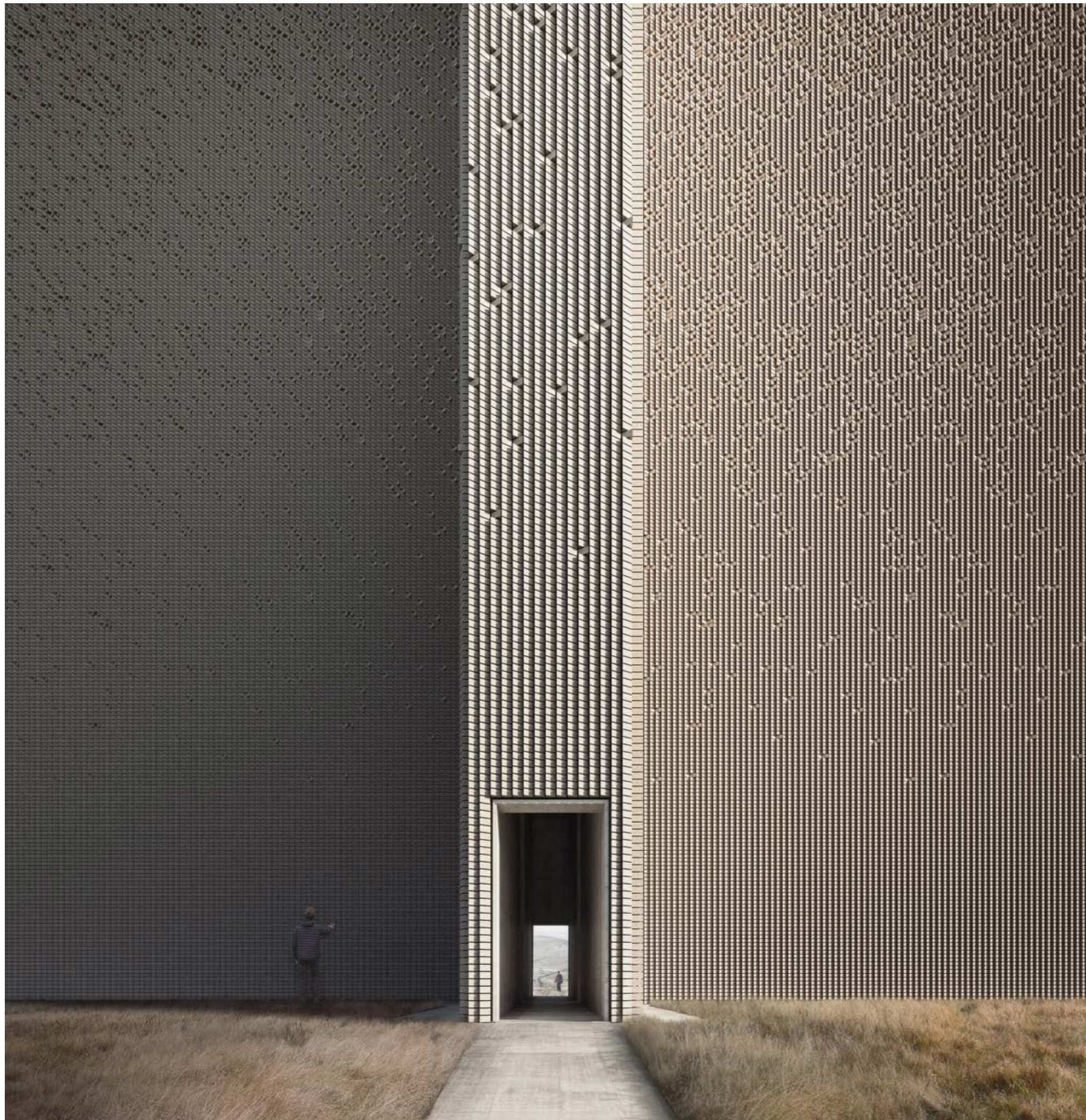












## Monument

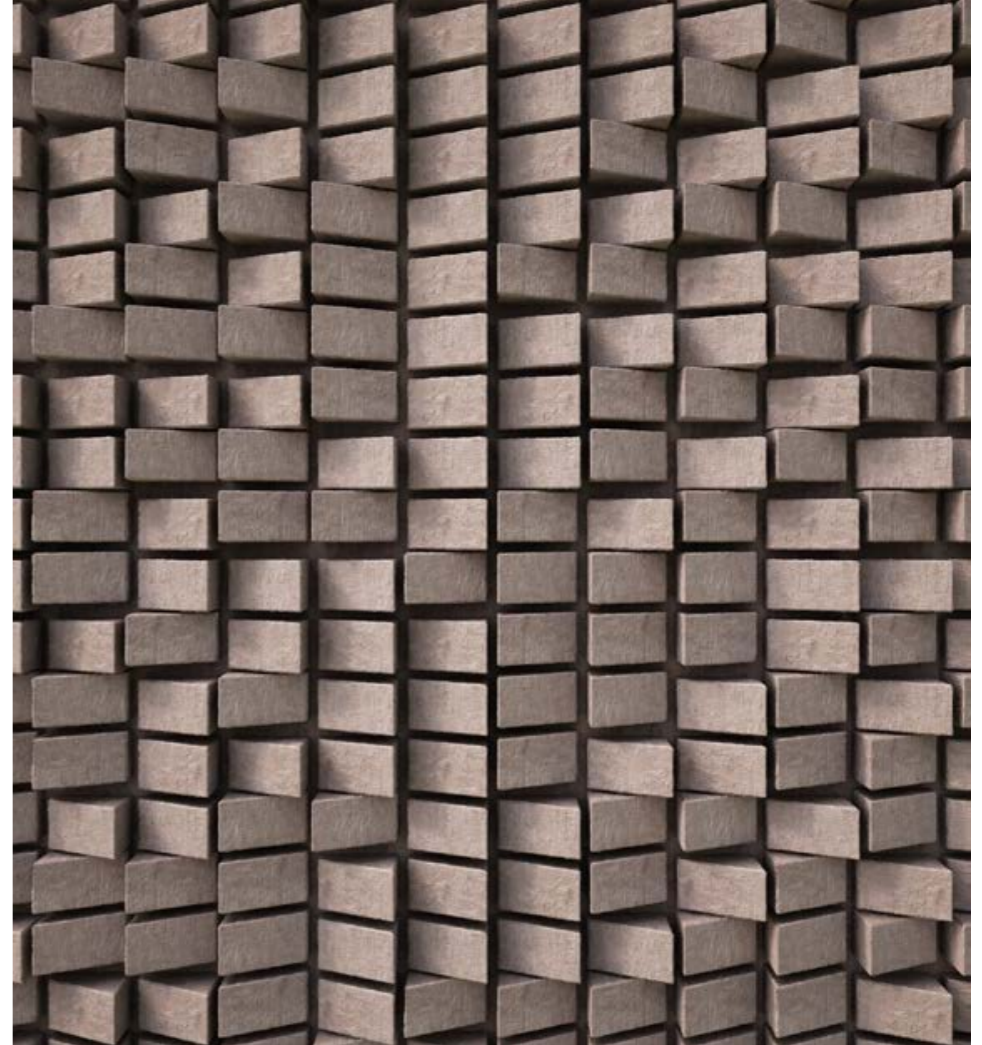
### *Powerful symmetry*

Monument's vast, intersecting walls enable the structure to soar to 40 metres high with a hollow core, drawing people's gaze irresistibly upward and offering a quiet moment of reflection within the monumental scale.

Bespoke bricks, extruded with subtly angled faces, shift in tone to form a dynamic, light-driven pixelation across the surface. This texture invites people to experience the structure through touch, taking you beyond the aesthetic.

Inside the structure, the northern and southern fins end in plinth-like seating, inviting people to rest, contemplate and take in the natural light filtering down from above.











## Conduit

### *An experiment in space definition*

This interactive shelter can adapt to people's needs, its surface shifting between an open, visually permeable design or a more enclosed, cocoon-like space.

A dry-stone wall anchors the structure and provides seating, where people can enjoy a solitary moment of calm or quality time with others.

Locally sourced natural materials add a layer of community to the project, as well as embedding it into the landscape in an honest way. The lack of adhesive material allows for the entire structure to be removed or relocated should the need ever arise.

This interplay of materials and form invites interaction, offering both a tactile experience and a fluid connection with its surroundings.



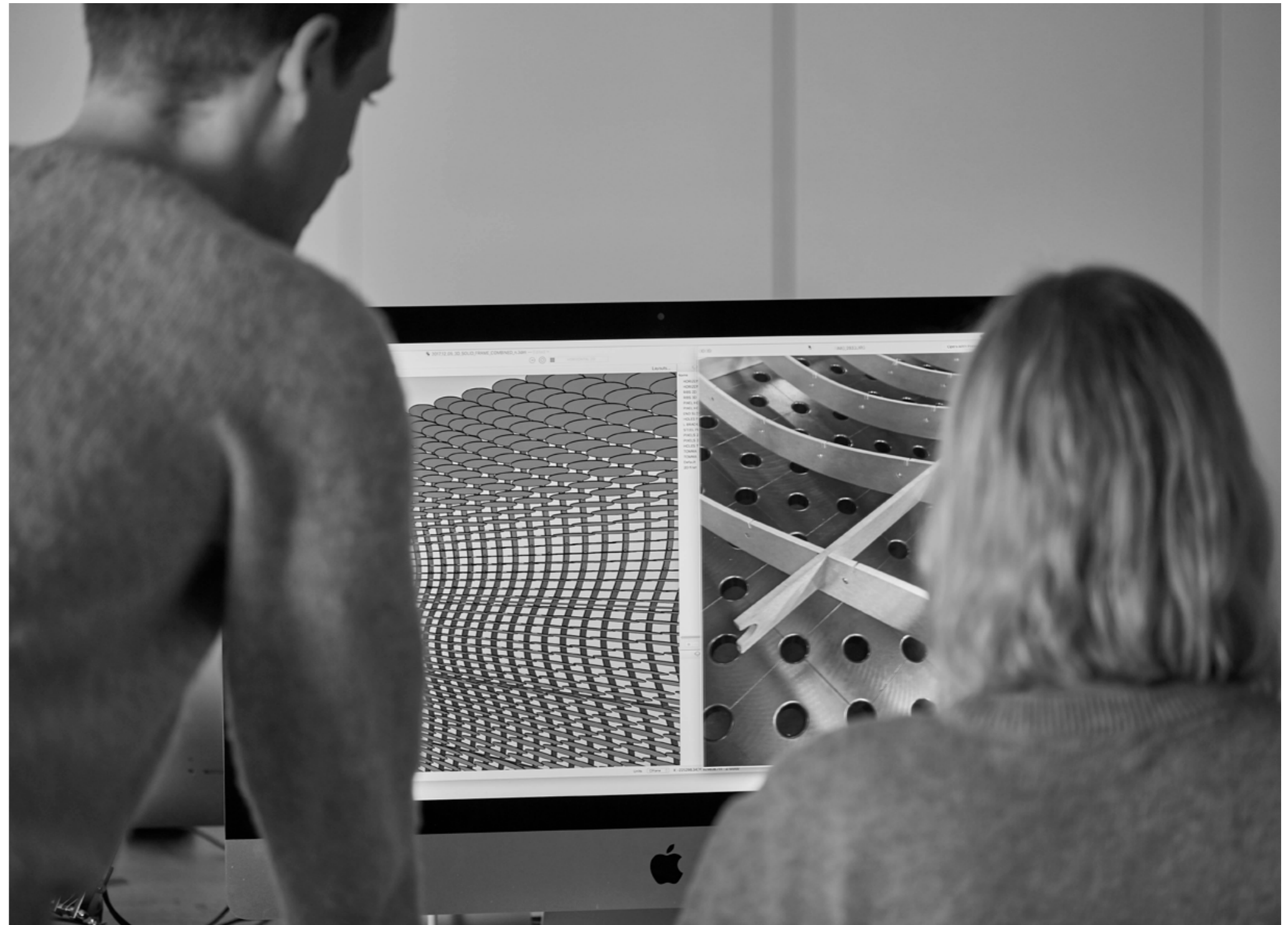






## Structural Commissions

Due to the bespoke nature of our structural works, all projects are priced individually. Please contact the studio for more information.





# Giles Miller Studio

+44 (0) 20 7293 0253  
enquiries@gilesmiller.com  
gilesmiller.com

## Sensory Artistry