

Giles Miller Studio

*Wing Sculptural System*

Surface  
Architecture  
Sculpture

### Wing Sculptural System

Wing is a unique evolution of our louvred surface work. A sea of pixels, angled individually, to illustrate content through shadow and tone.

The resulting complexity of meticulously arranged components creates richness, tactility, depth and allure.





Project case study :

Sheikh Zayed - A Portrait  
DoubleTree by Hilton Dubai M Square

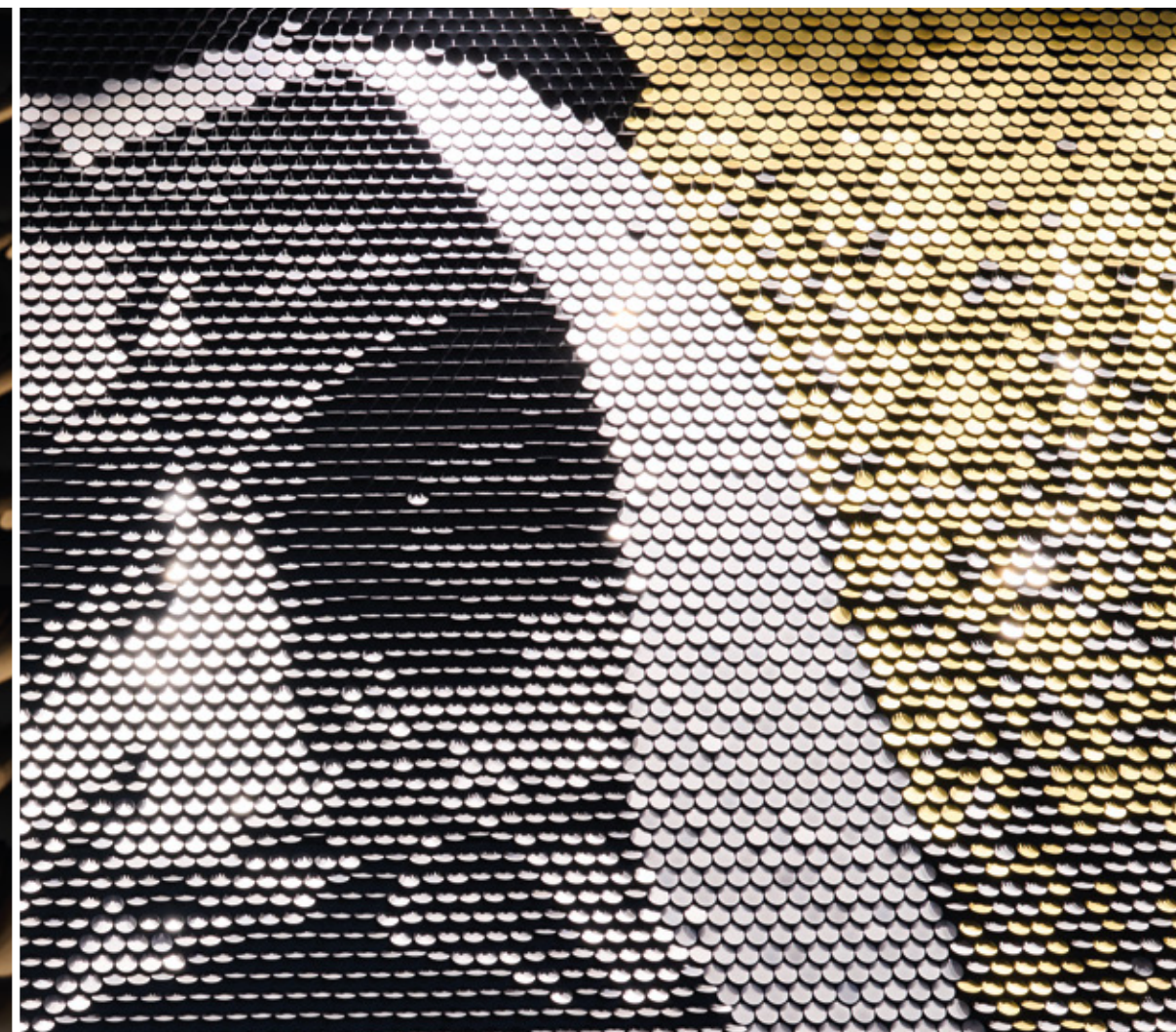
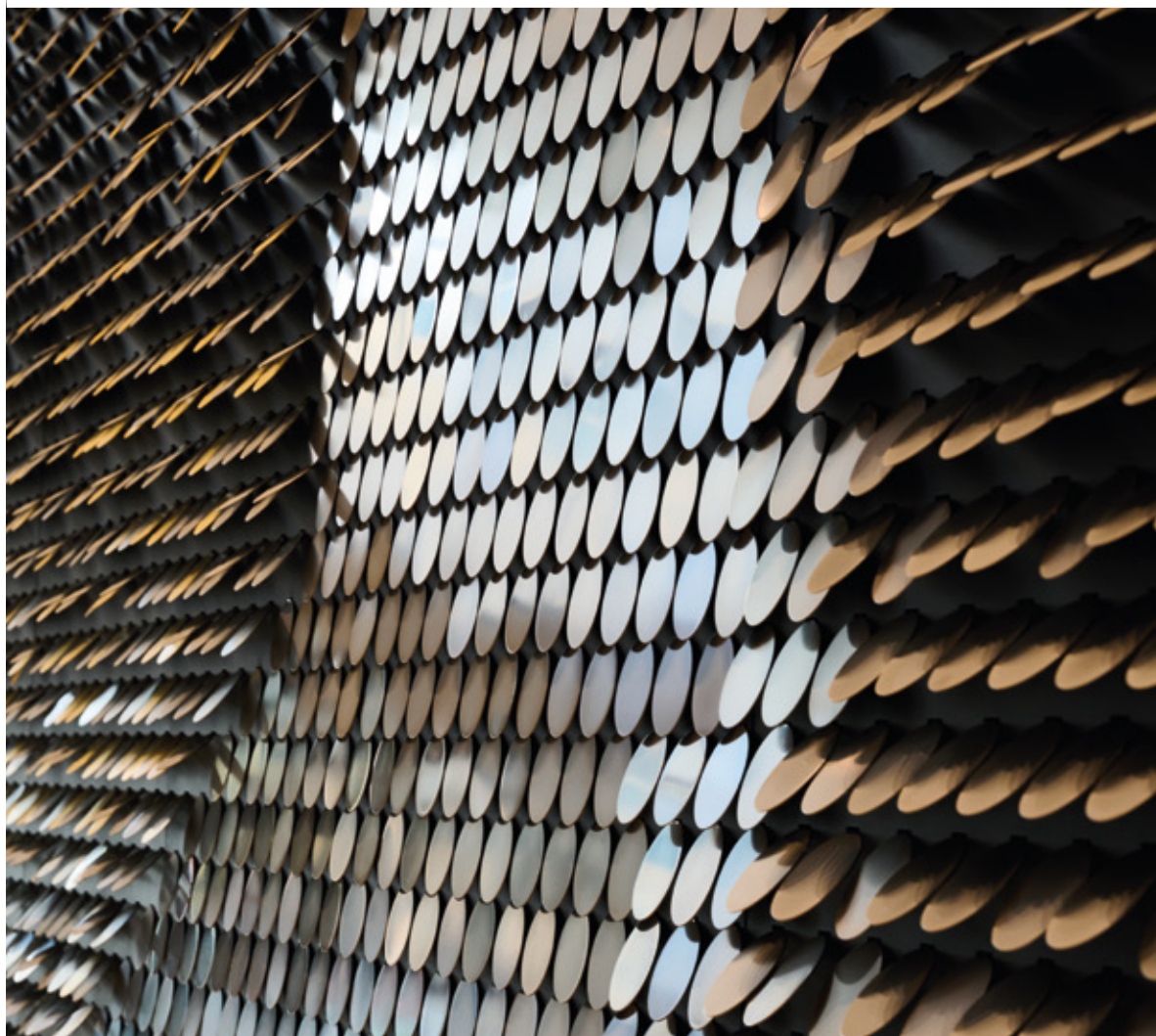
This unique portrait of the late Sheikh Zayed bin Sultan Al Nahyan is the centre-piece for DoubleTree by Hilton Dubai M Square Hotel & Residences

The intriguing and imposing work of art is over 15m long and is made up of over 29,000 reflective discs, composed in the surface of the artwork at varying angles to reflect light back to the viewer.

The mural features a gradient of reflective tone as a backdrop to Sheikh Zayed, and it is a feat of the artistic technique developed by the studio that only two different finishes of plated metal were used to create an image that appears to be highly varied and expressive in tonal depiction.

The artwork has been listed as one of the nine top 'Hilton Art Collections Around the World'.

We used two different finishes - matt silver and matt gold.





Project case study :

Where the Mountains meet the Sea -  
Hubei Province, China

For this artwork the shape of each of the pieces was an interpretation of a chime which was relevant to the region where the artwork was installed. A mountain scape reflected in water is illustrated by using varying angles of the pieces.

We used two different finishes - matt  
gunmetal and matt gold.



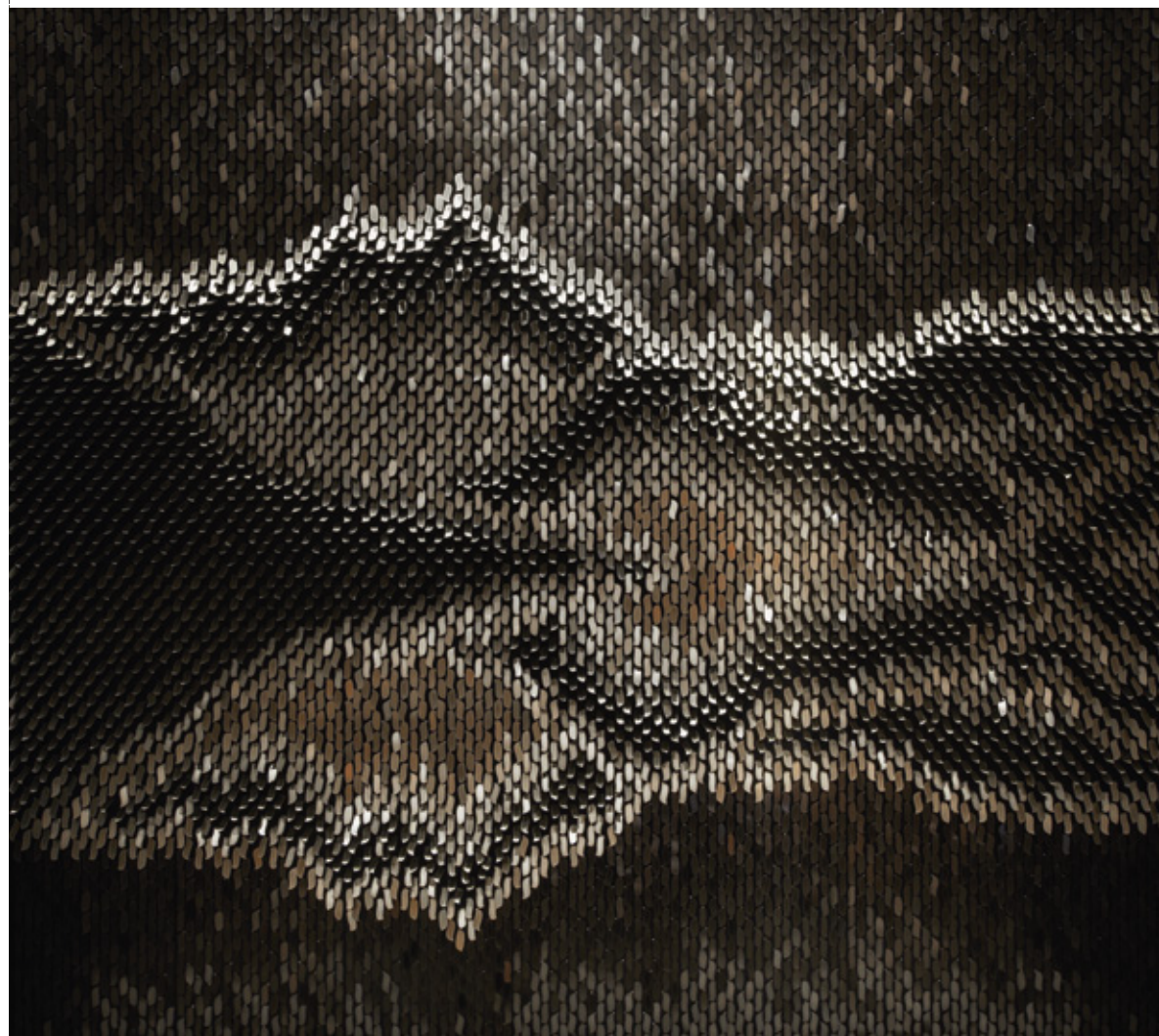
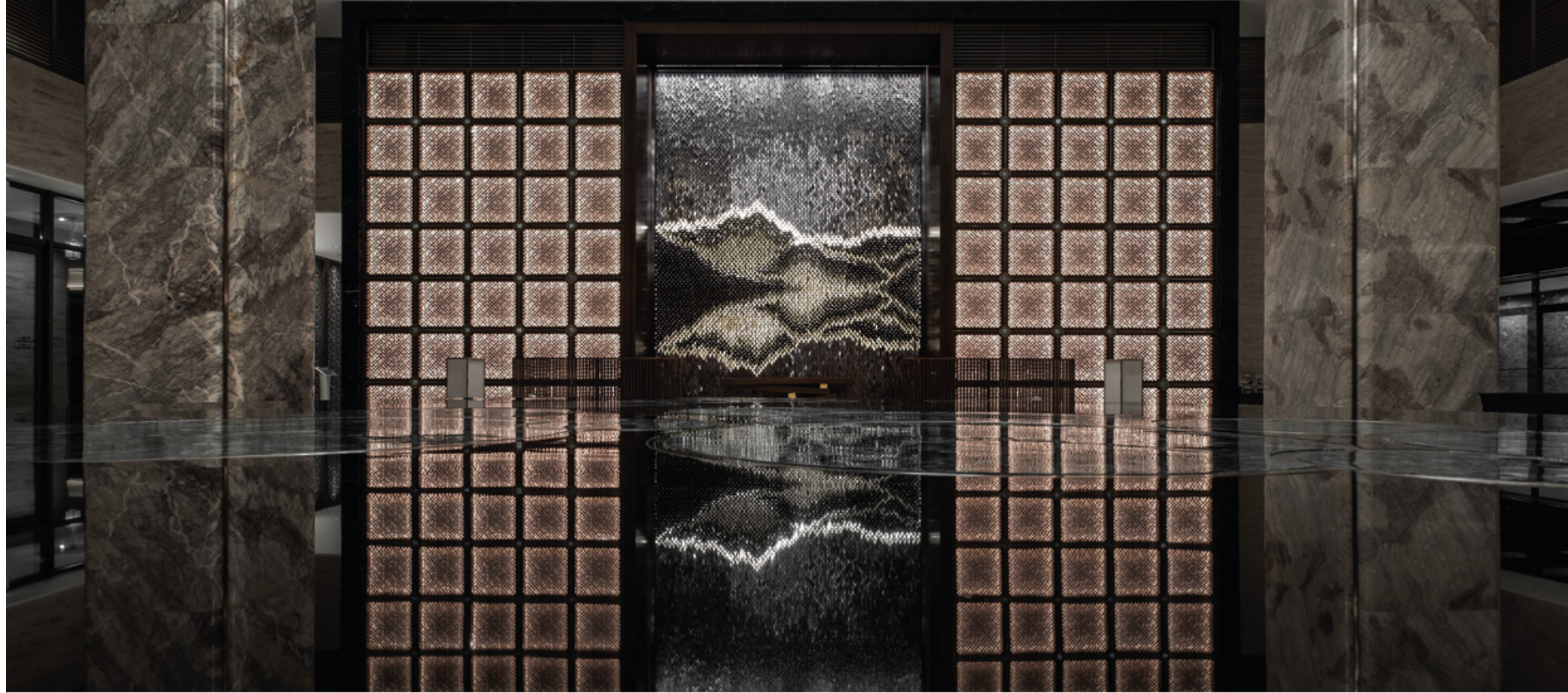


Project case study :

Lotus - Guillin, China

For this artwork the shape of each of the pieces was an interpretation of a lotus leaf. A mountain scape is illustrated by using varying angles of the pieces.

We used two different finishes - matt gunmetal and matt gold.

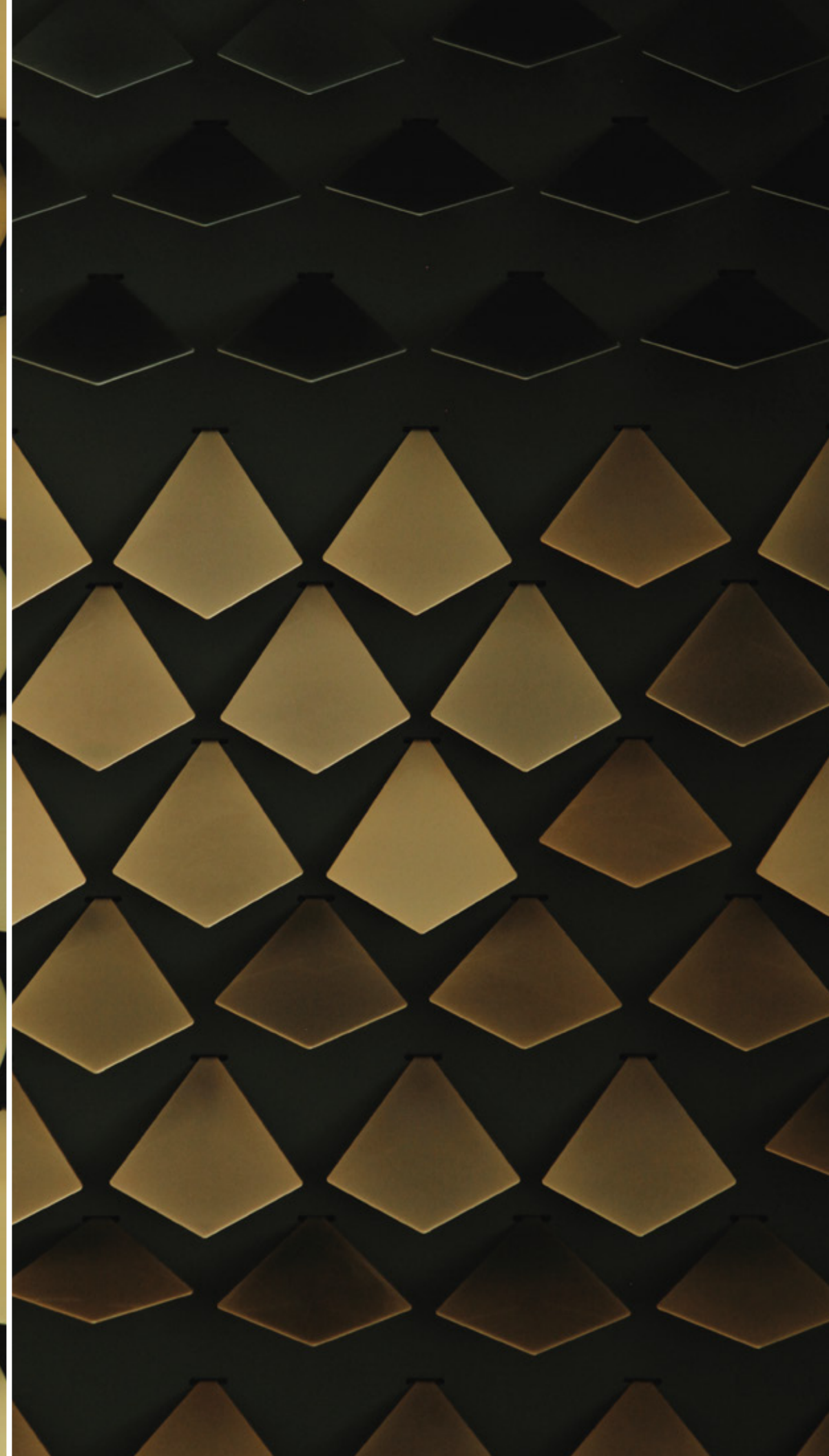
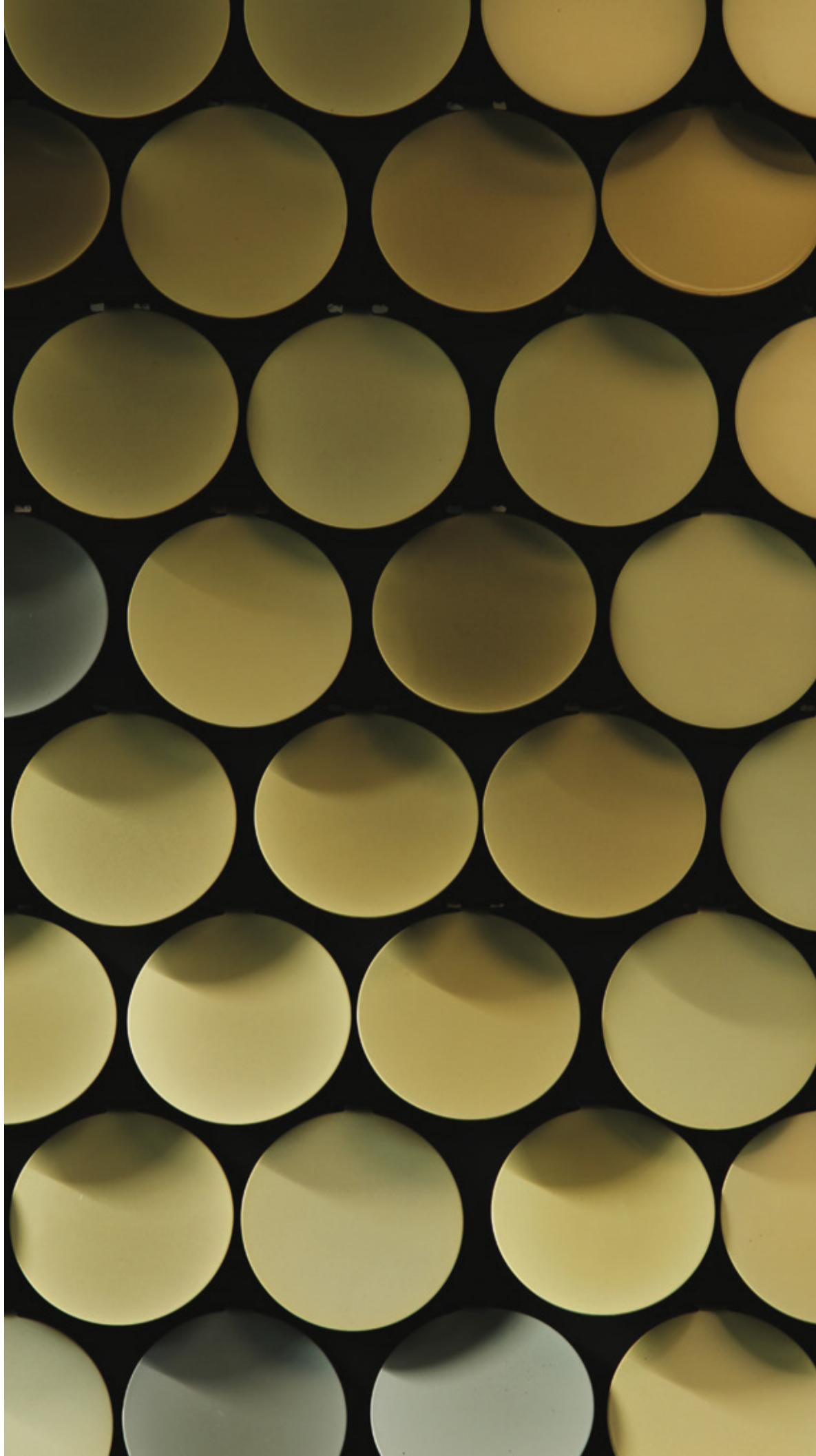




*Bespoke design elements*

### Bespoke pixel shape

For these artworks we can produce a shape which is completely unique to the project as well as relevant to the scheme. We can also use our standard shapes - hexagons, diamonds, circles etc.

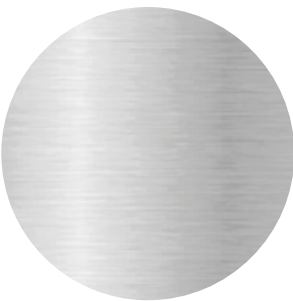


Finish Options

A wide variety of finish options are available. We can look into developing bespoke finishes if required.



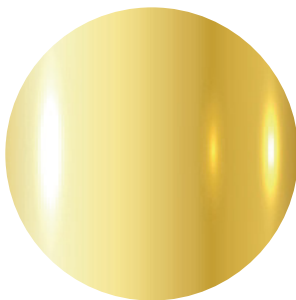
Silver



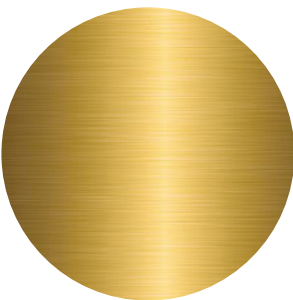
Matt Silver



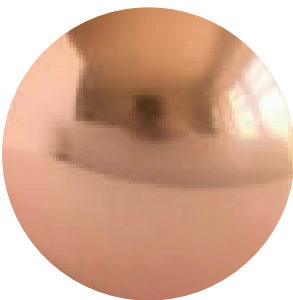
Matt Gun Metal



Gold



Matt Gold



Rose Gold

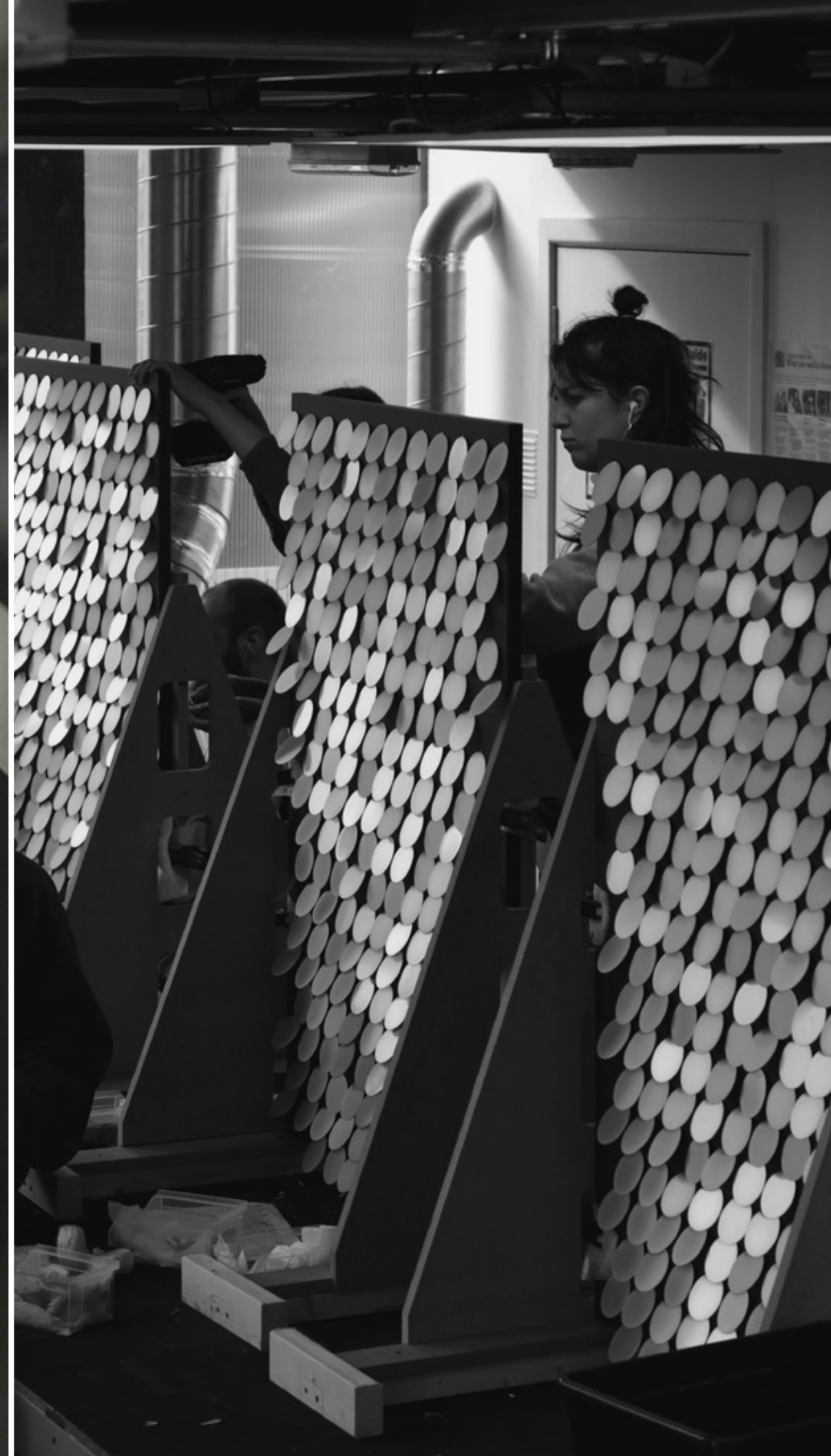


Matt Rose Gold



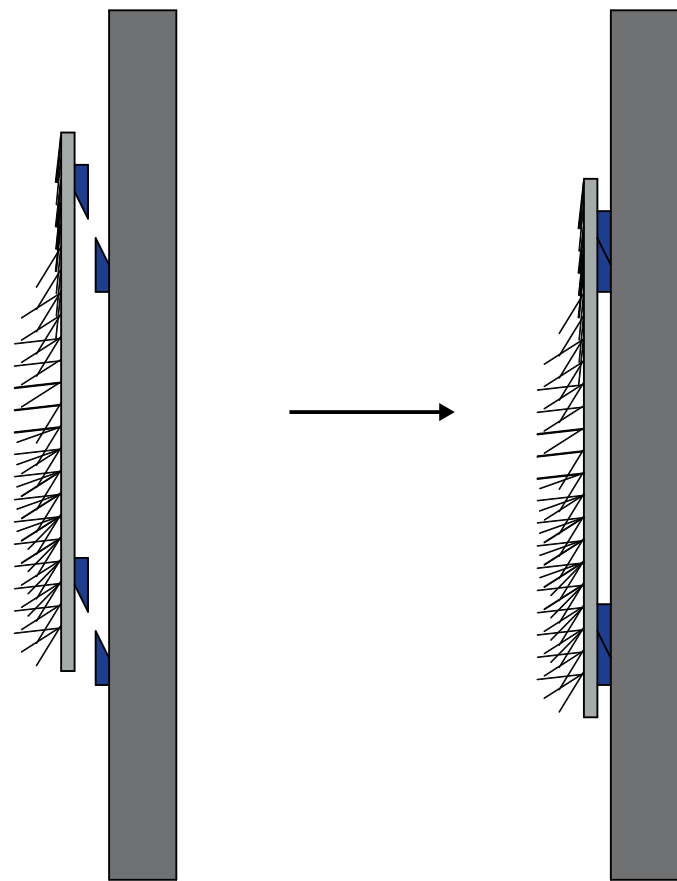
## Assembly/Production

We have designed and engineered a specialist backing system which means that the pieces arrive all prefixed to panels at the correct angles in order to illustrate the artwork. The backing panels are approximately 21mm thick and can be sprayed any dark RAL colour.





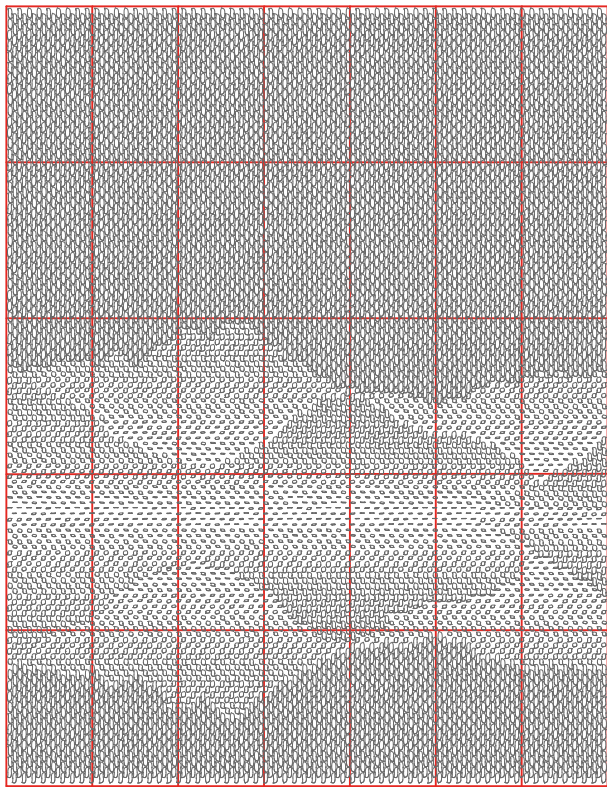
Example of gravity rail (French cleat) system:



Installation

The artwork will be split into panels.  
The panels arrive with metal gravity rails which are simply attached to the back and to the wall which makes hanging the panels very easy. We send the panels labelled with an install map to make the install process straightforward.

Example of artwork split into small panels:





# Giles Miller Studio

1 Carriage Way  
Deptford Market Yard  
London  
SE8 4BZ

+44 (0) 20 7293 0253  
[enquiries@gilesmiller.com](mailto:enquiries@gilesmiller.com)  
[gilesmiller.com](http://gilesmiller.com)

*Thank you.*

Surface  
Architecture  
Sculpture