

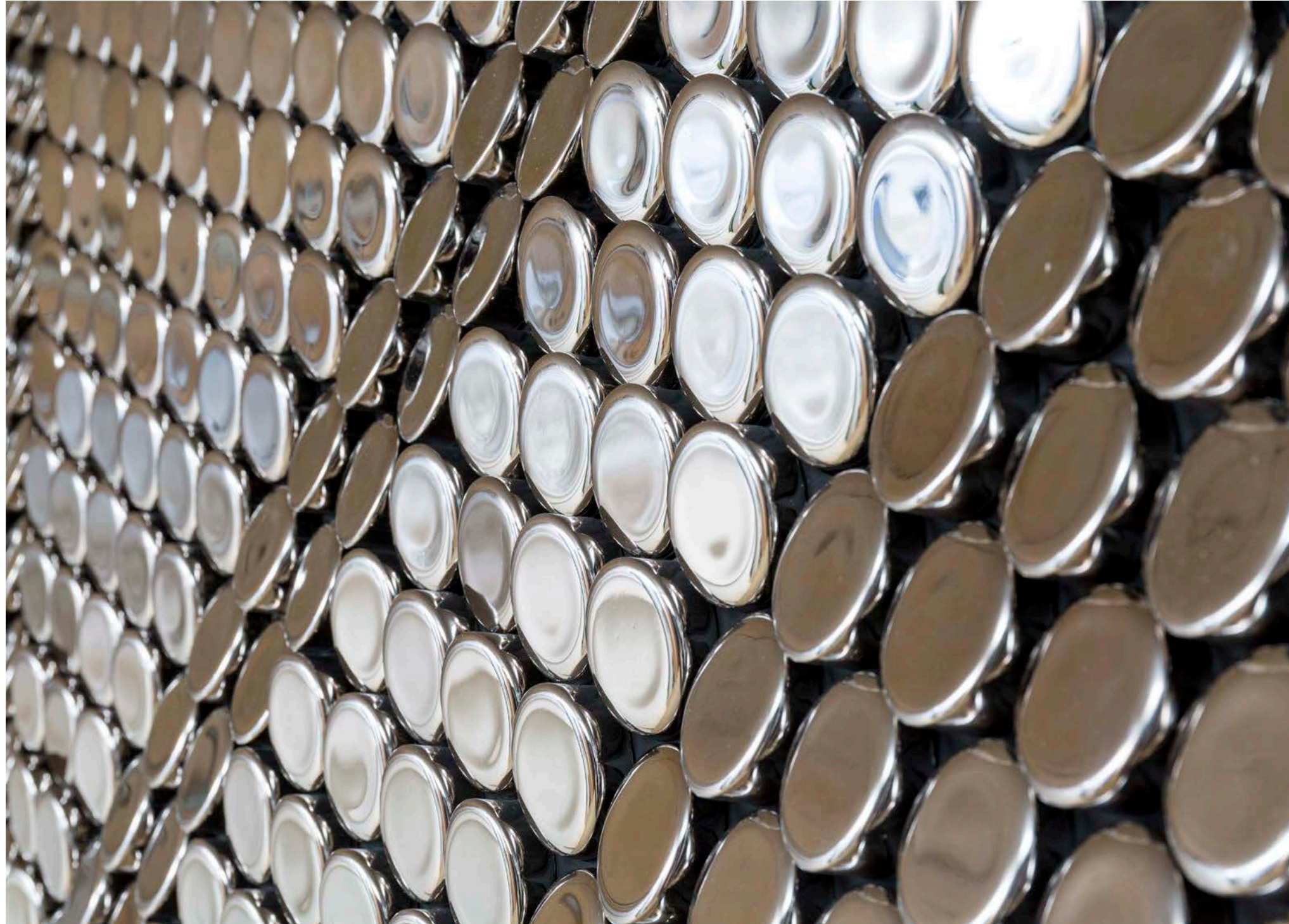
# Giles Miller Studio

Surface  
Architecture  
Sculpture









Giles Miller Studio believes in enriching the way we experience our surroundings.

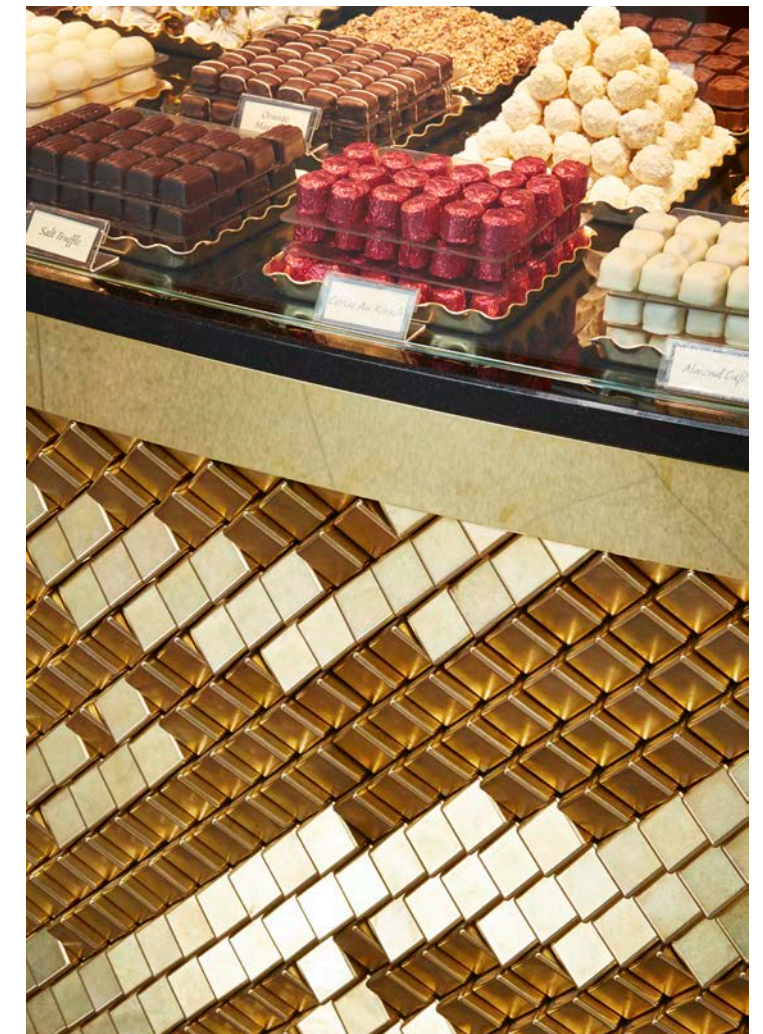
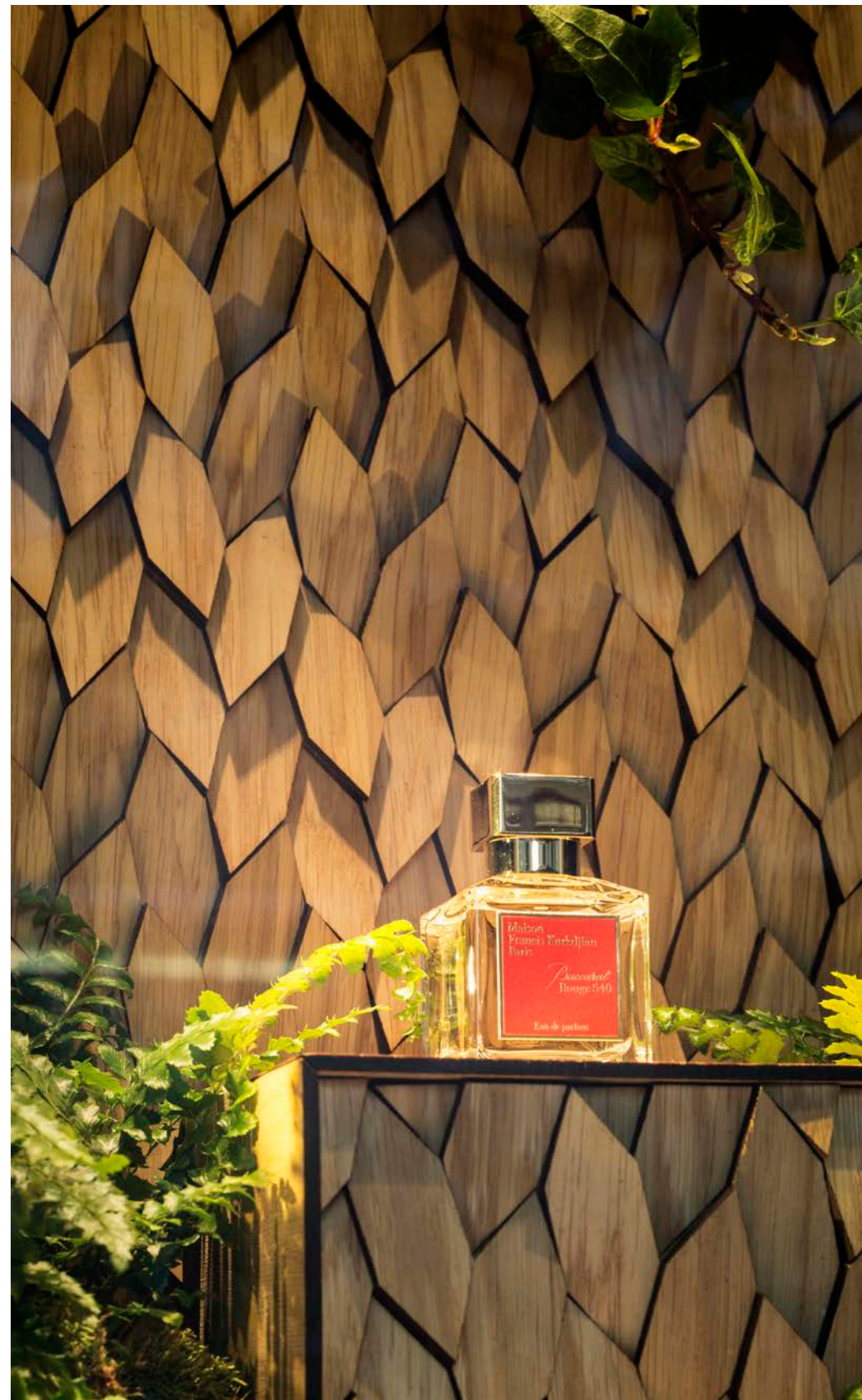
The studio creates innovative surfaces, sculpture and architecture.

In each discipline, the studio brings new meaning to spaces by celebrating the relationship between materials and light.



Brands across the globe have trusted our team to deliver creative originality to the retail experiences they wish to offer their customers. Our artistic approach to surfaces and sculpture brings depth and meaning to the experiential retail environments that we work with, as well as an originality so craved by shoppers and brands alike.

Often our designs have become intrinsic to the DNA of a brands character, and been rolled out globally giving customers a sense of consistency in their brand experience. Our team can create installations and feature surfaces that are bespoke to individual brands, from the material and colour schemes, down to artworking and even bespoke design for individual tiles or pixels.









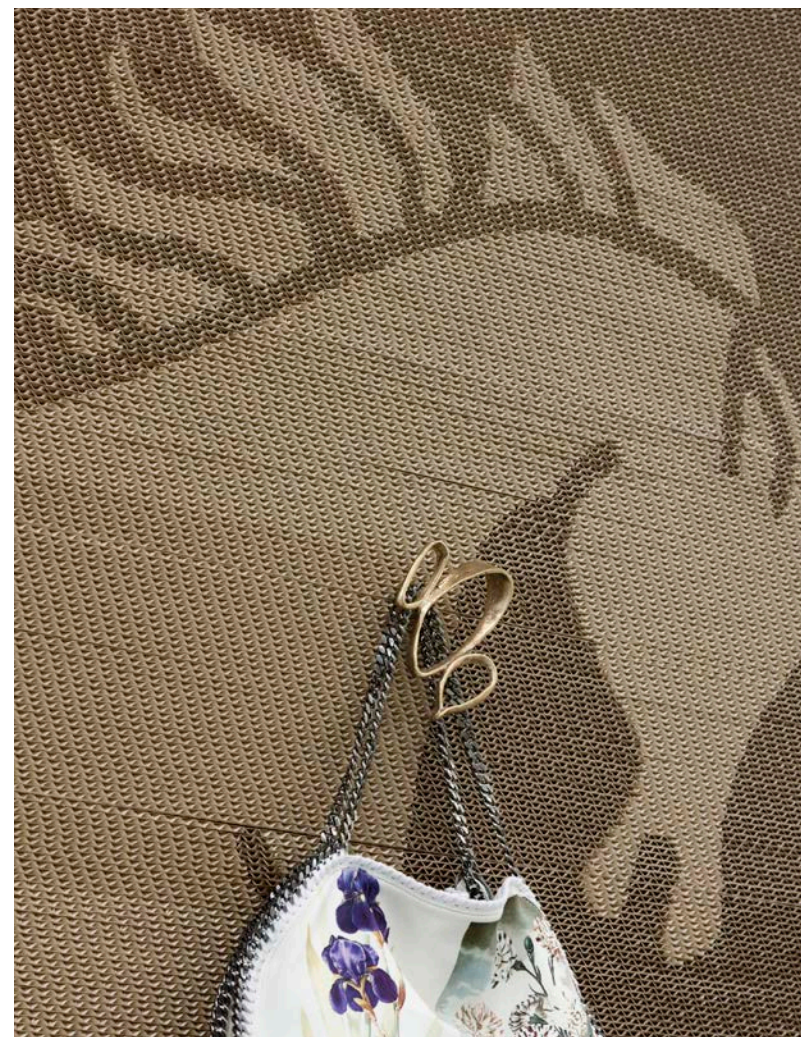
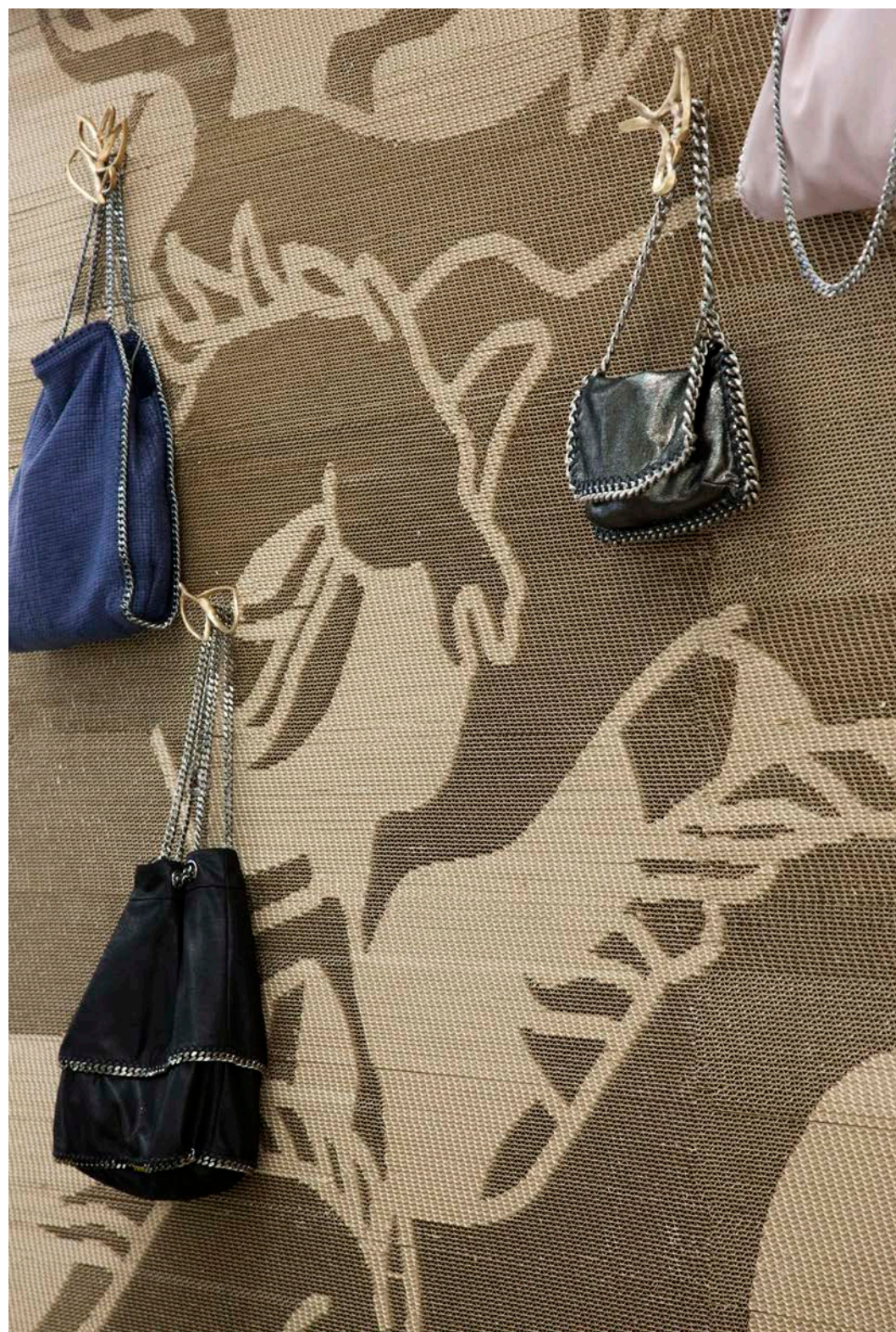
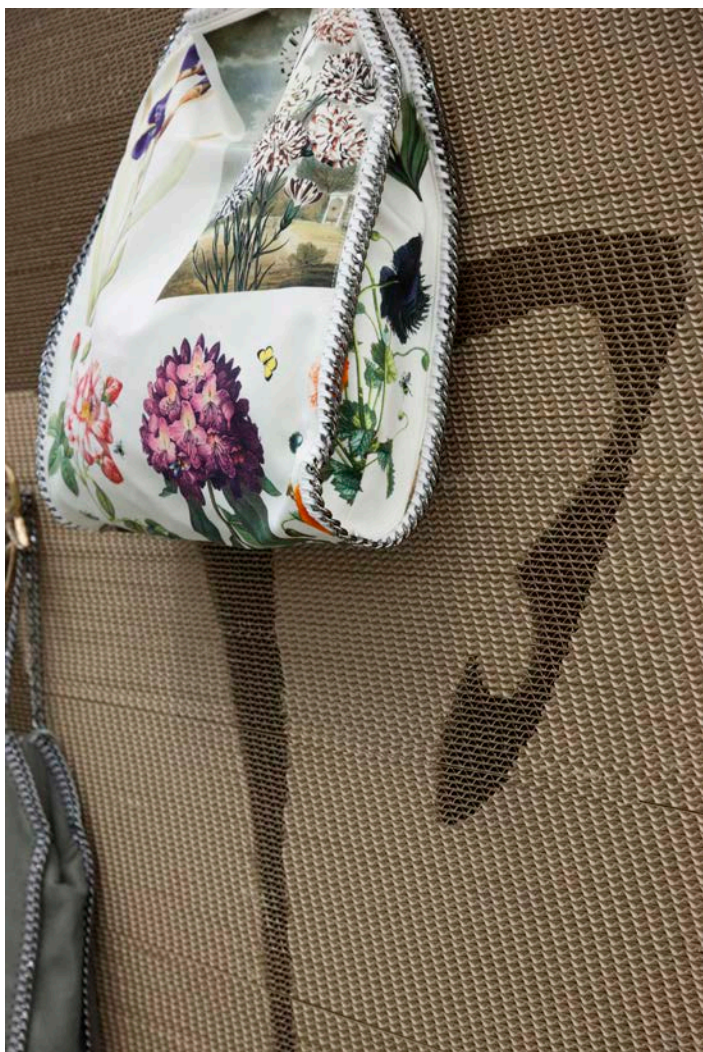
# Stella McCartney

*Selfridges, London*

The iconic fashion designer first commissioned Giles whilst he was still studying at the Royal College of Art in London. Our first project was a cardboard mural in their Paris boutique, and GMS has continued to work with Stella McCartney on a wide range of retail, branding and artisan projects over the years that followed.









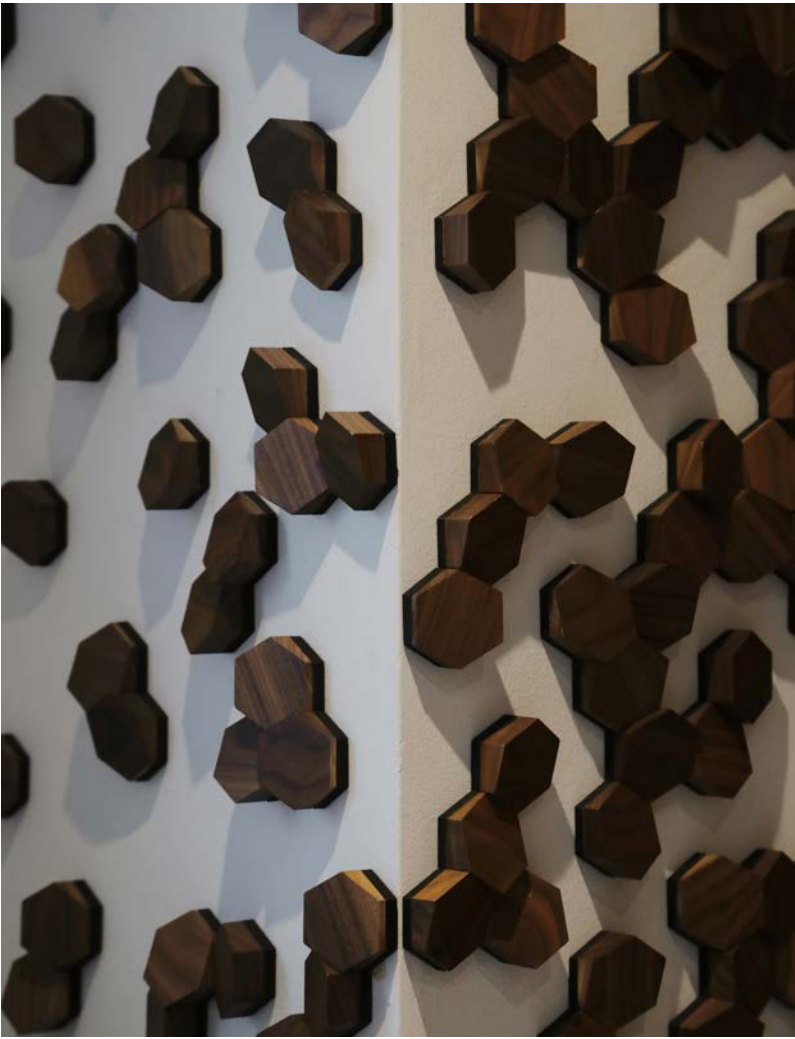
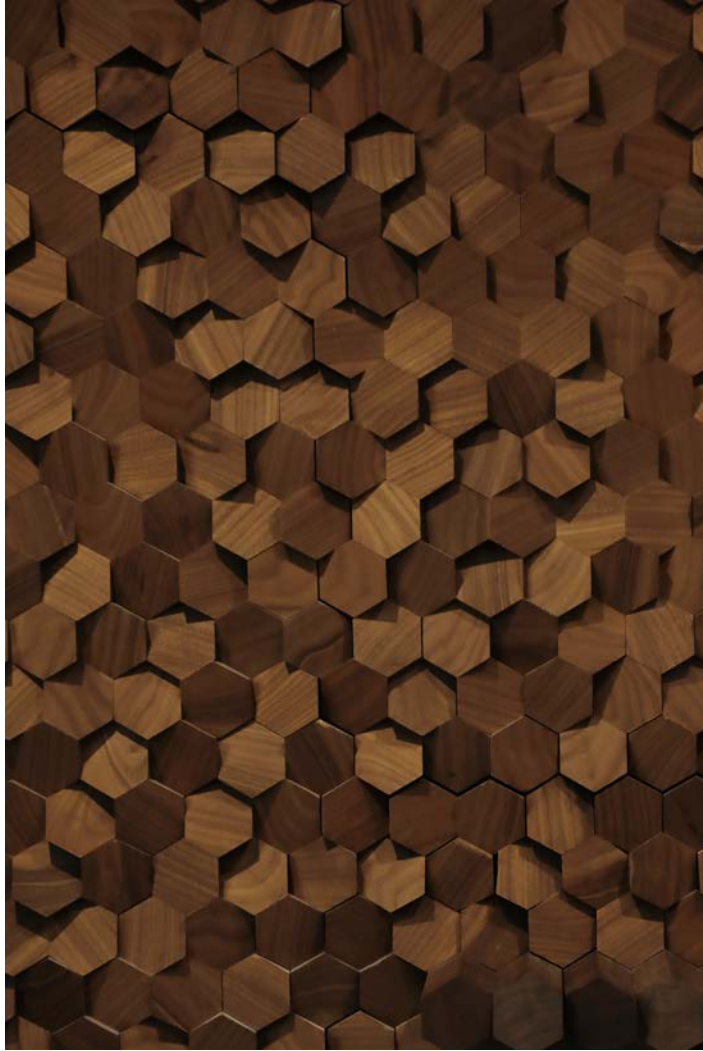


## Malone Souliers

*London, United Kingdom*

At GMS we love contrast - at the beautiful Malone Souliers store in London our walnut timber installation juxtaposes the crisp white retail environment with dramatic and evocative effect. The project featured a gradient of tiles dispersing along surrounding walls and ceilings, with some of the tiles extruding from the wall to create shelving for the stunning footwear sold in the store.











# Omega

*Switzerland*

GMS continues to collaborate with Omega on surface artworks which are applied as advertising backdrops as well as in retail merchandising.







## Harrods Windows

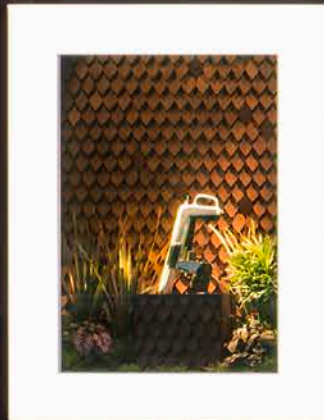
*Knightsbridge, London*

GMS were asked to create surface artworks to act as backdrops to the Brompton Road window displays – based on the theme of the Royal Chelsea Flower Show the studio developed varied versions of it's timber veneer surface to create a triptych of themed displays.

GMS continues to work on project with Harrods, both temporary and permanent.



# Harrods



  
CORAVIN™  
The Wine Rooms on LG

Designed in partnership with  
giles miller studio.



  
CORAVIN™  
The Wine Rooms on LG

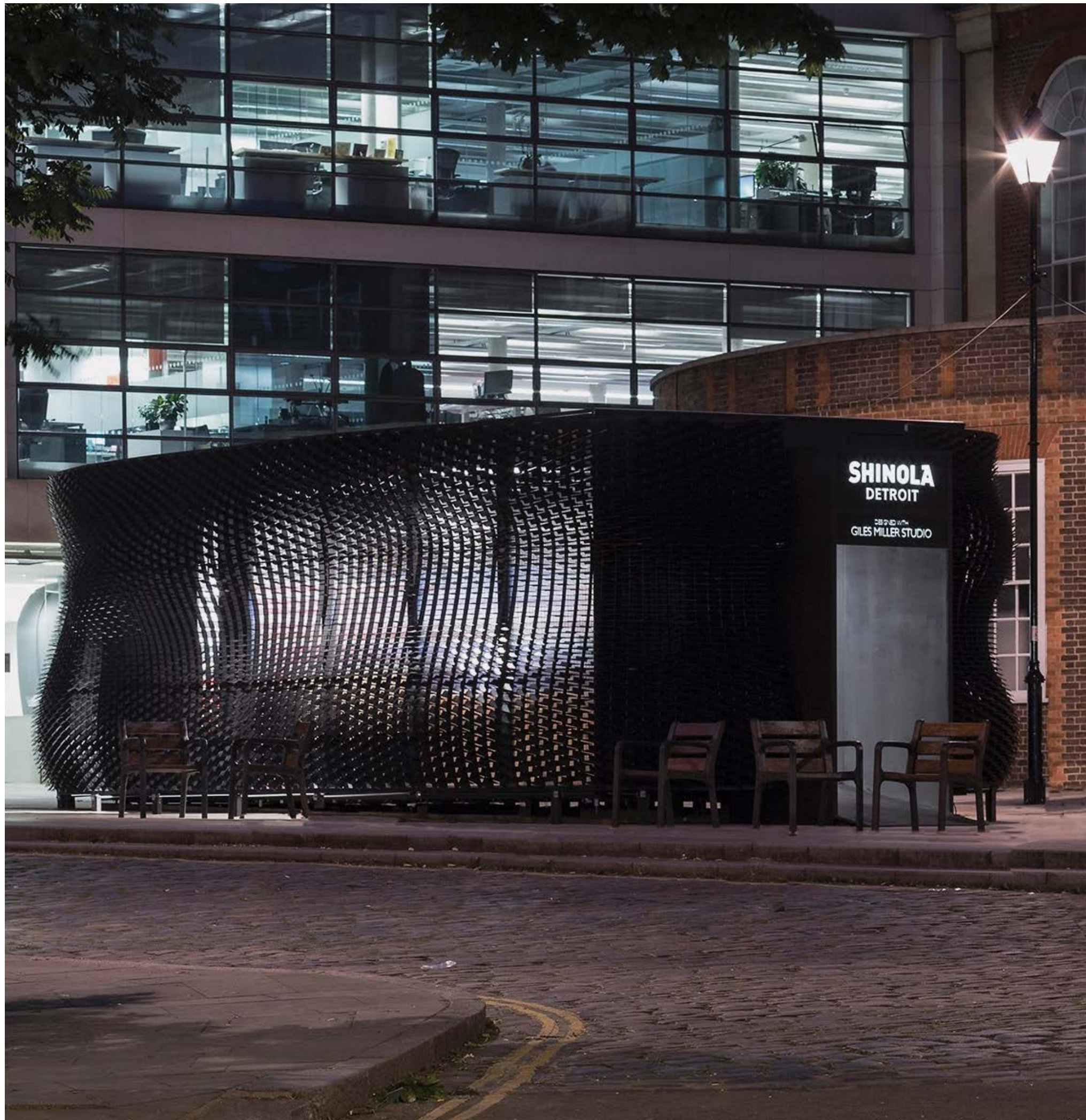
WHATEVER  
THE  
WEATHER



  
CORAVIN™  
The Wine Rooms on LG

Designed in partnership with  
giles miller studio.





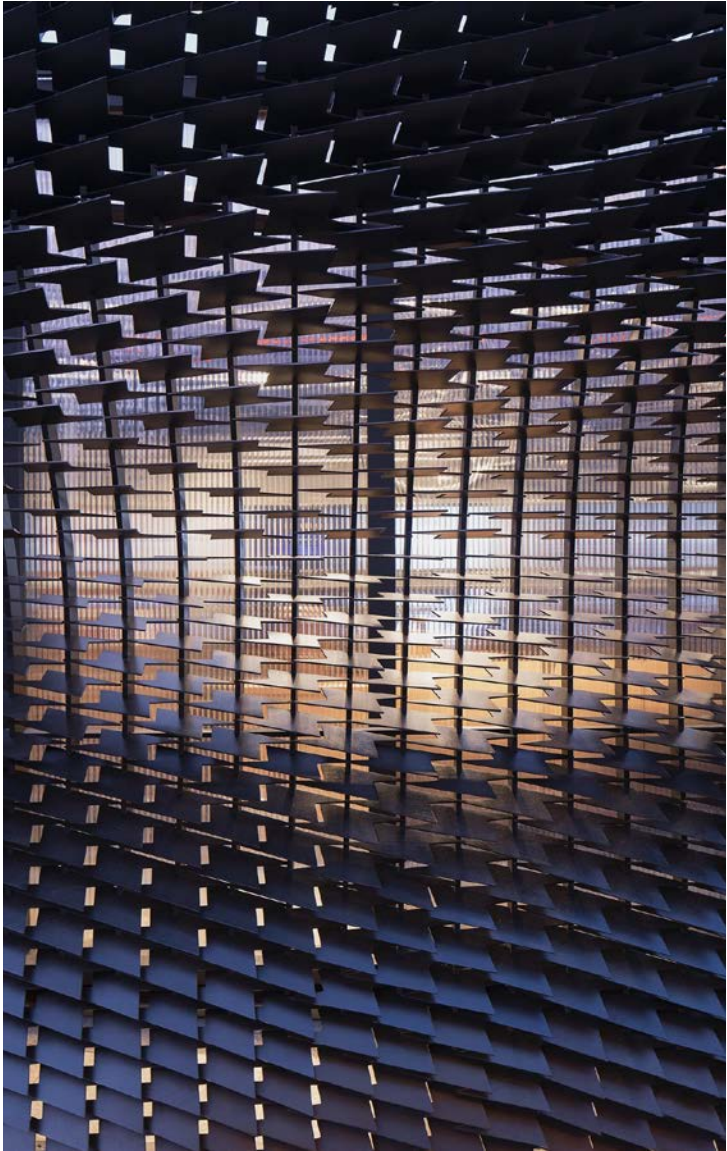
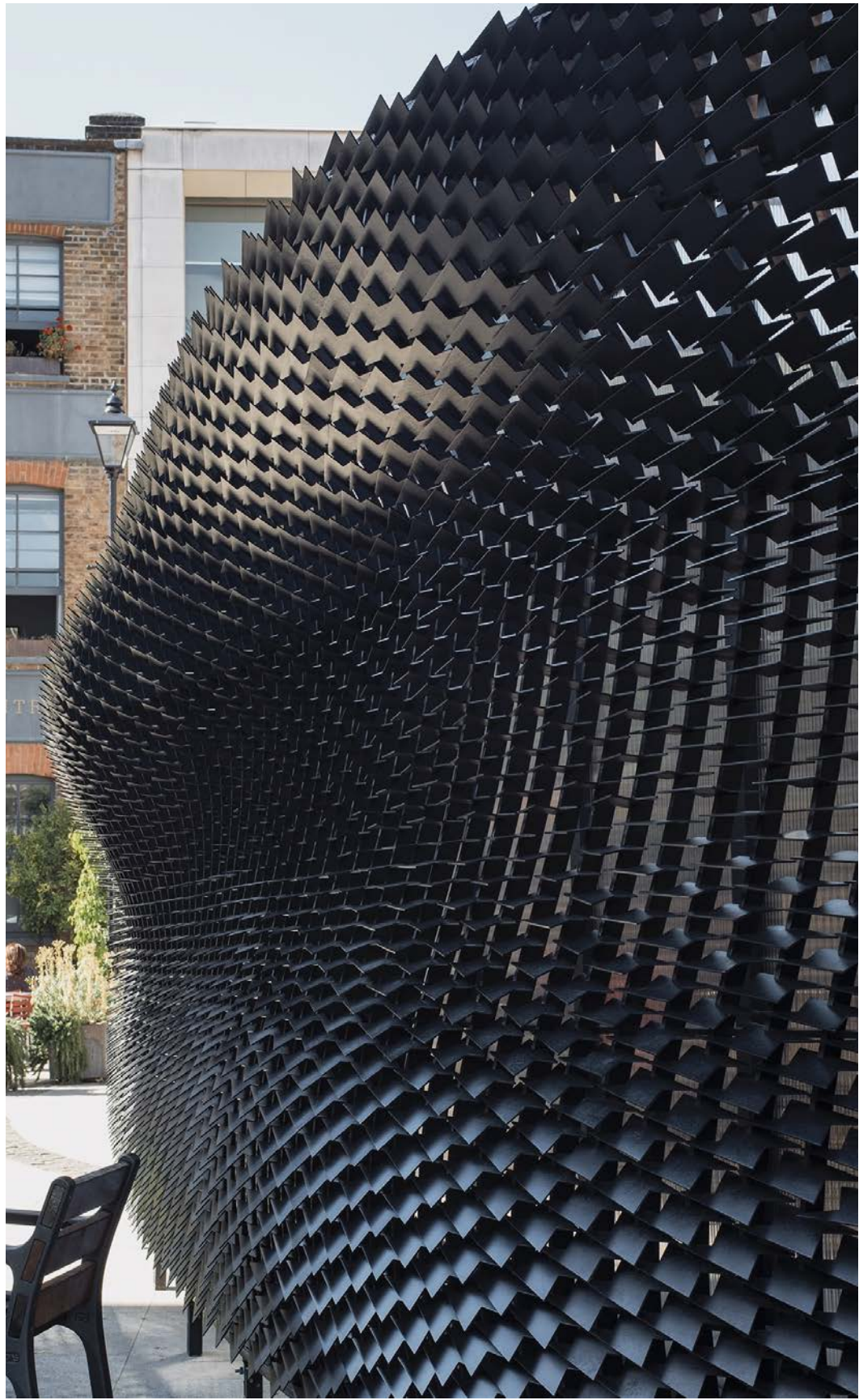
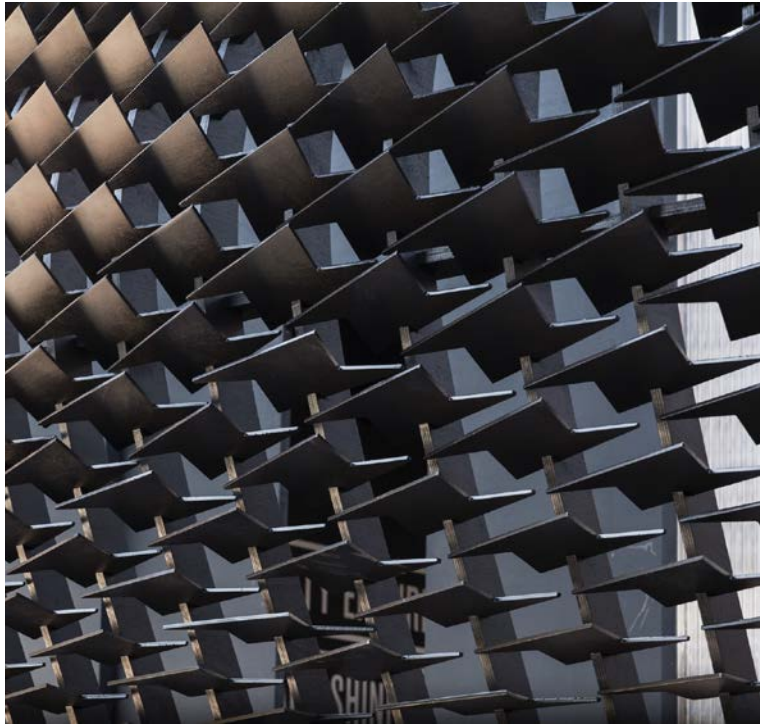
## The Bolt

*St. Johns Square, London*

For the duration of Clerkenwell Design Week GMS installed a temporary showroom for Detroit-based lifestyle brand Shinola in the heart of St. Johns Square in London.

The building showcased neoteric louvre-generated facade concepts, demonstrating how a surface can control visual and light permeability to generate intrigue surrounding a buildings contents.







# SHINOLA DETROIT

DESIGNED WITH  
GILES MILLER STUDIO

SHINOLA  
DETROIT

PLANT IT,  
GROW IT,  
BUILD IT,  
WELD IT

#SHINOLACITY







## Level Shoe District

*Dubai, UAE*

Commissioned to create a mural for the Womens VIP area at the Dubai Mall Shoe District, the studio worked alongside interior designers Shed to produce a tailor-made ceramic wall covering featuring tiles arrayed in floral formations in a variety of ceramic finishes.



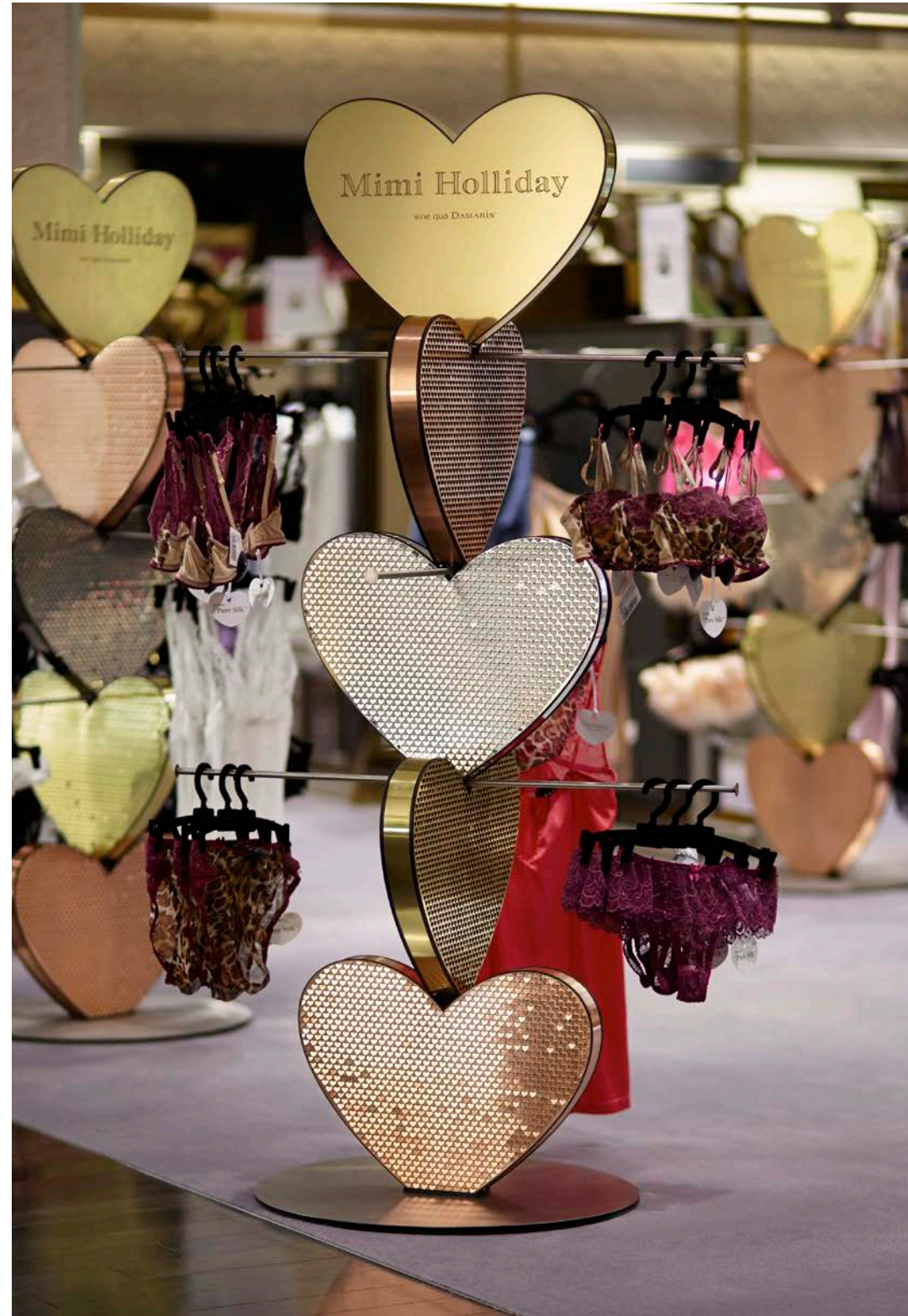




## Damaris in Harrods

*Harrods, London*

A collaboration for our favourite lingerie designer spawned intricate and tailored visual merchandising and retail design for their London store as well as pop-ups in Harrods and beyond.







## Butlers Chocolate Cafe

*Dublin Airport, T2*

Butlers Chocolate needed a robust and durable installation for their new cafe in Dublin Airport. GMS developed the *Harper* tile especially for the project – a cast zinc metal tile with brass plated finish, the tile ended up as robust and strong as it did strikingly beautiful. The *Harper* tile has now been commissioned for Butlers Cafes around the globe.











## Colab Desk

*Dubai, UAE*

GMS surface artworks are not only applicable to wall-based contexts - this beautiful desk was designed as a one-off for a materials library in the UAE, showcasing the studio's 'Fin' tile in matt white ceramic.







## Yas Mall

*Abu Dhabi, UAE*

Commissioned to create a unique surface system incorporating triangular 3-dimensional tiles, the studio produced both mirror and corian-backed surface artworks for the largest handbag store in the world, located in Yas Mall, Abu Dhabi. Our compositions framed stores including Burberry, Chanel, Dolce and Gabbana, Louis Vuitton and Fendi.









## Harrods Tech Department

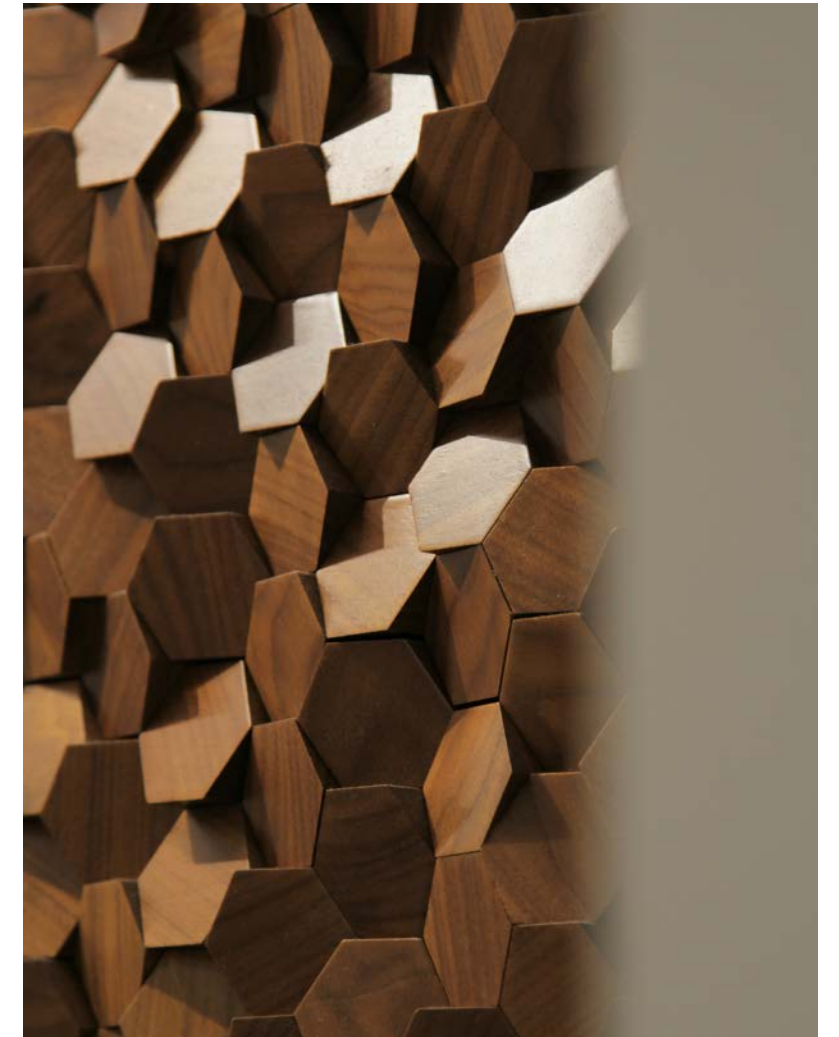
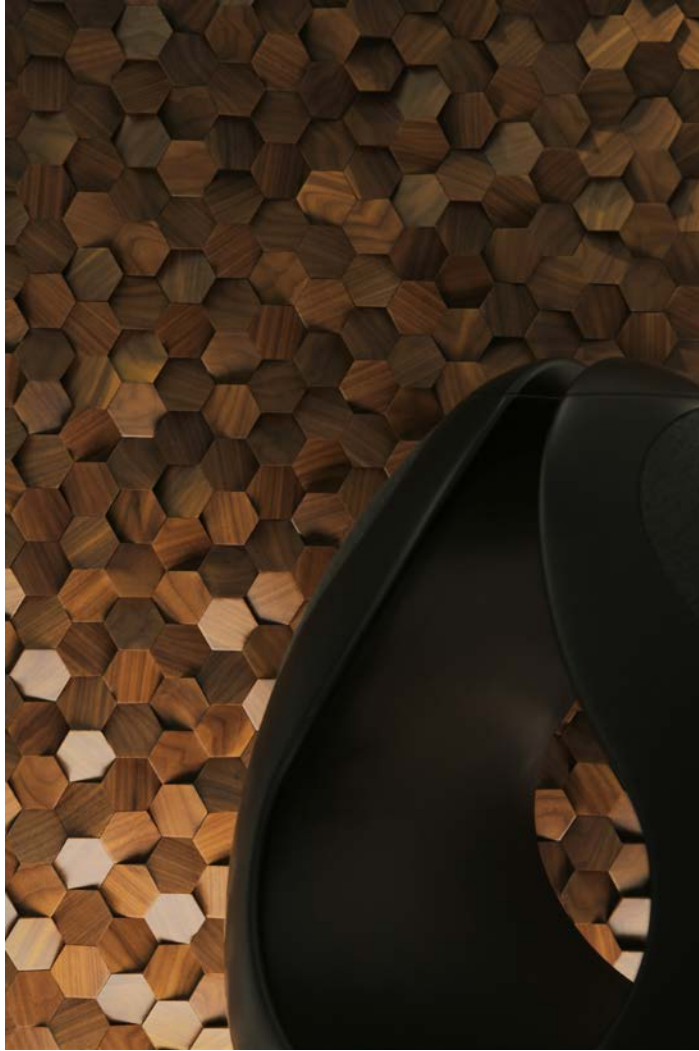
*London, United Kingdom*

Harrods commissioned Giles Miller Studio to produce a variety of surface artworks to complement the modern and refined interior of it's new Technology department.

The murals were created using the studio's hexagonal walnut Alexander tile, to reflect the light in the space and to draw attention to the products on display.

The resulting effect enriches the luxury shopping experiences and creates the perfect backdrop to some of the world's more innovative products.







# Fauchon

*Paris, France*

Our tiled installations often become a true part of the DNA of a brand or retail experience. Commissioned by the famous Fauchon in Paris, GMS created a variety of material combinations in our Harper tile, bringing character and depth as well as a sense of definition to the different areas within the store.



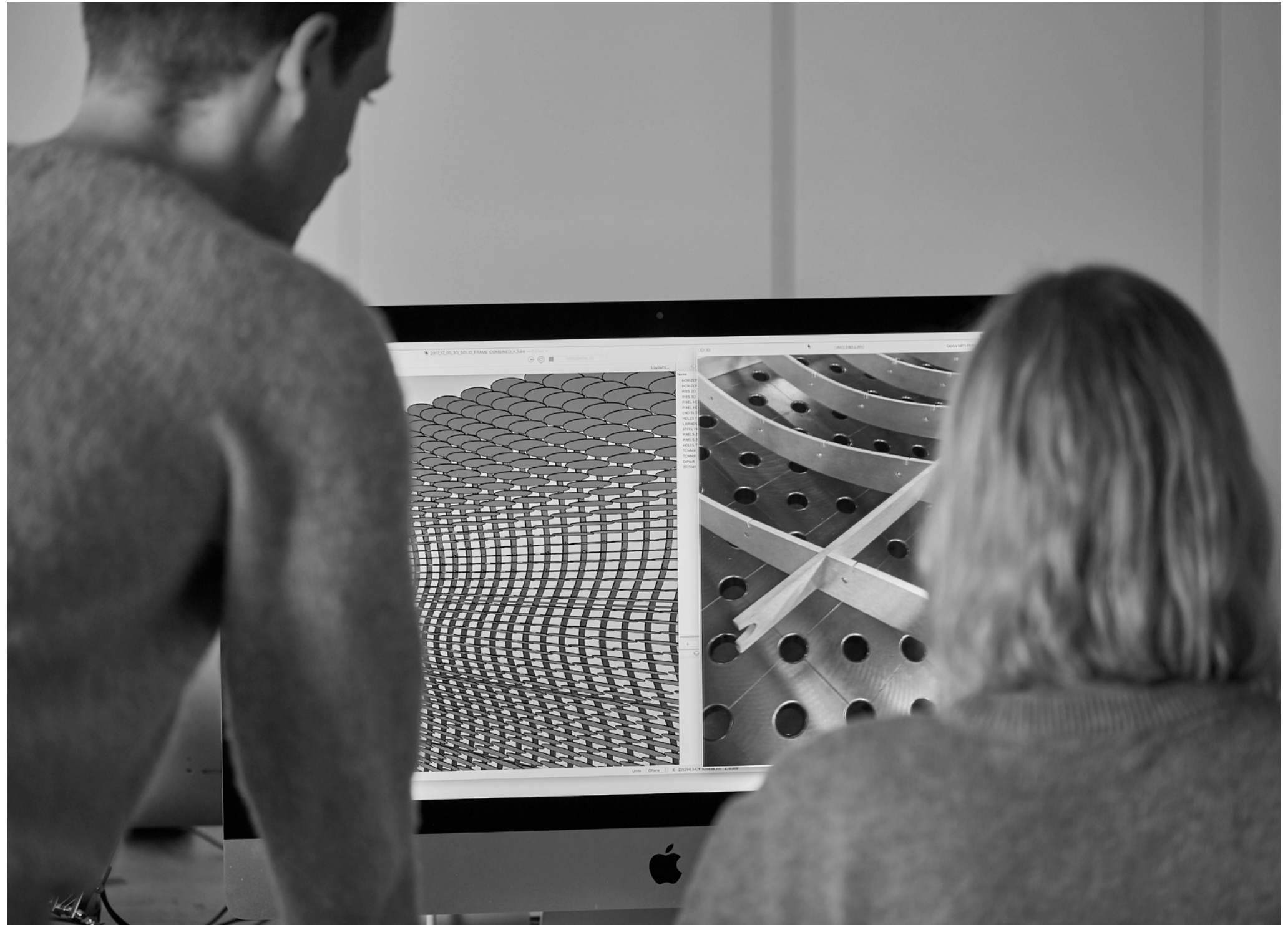






## Commissions

Due to the bespoke nature of our retail collaborations, all projects are priced individually. Please contact the studio for more information.





# Giles Miller Studio

1 Carriage Way  
Deptford Market Yard  
London  
SE8 4BZ

+44 (0) 20 7293 0253  
[enquiries@gilesmiller.com](mailto:enquiries@gilesmiller.com)  
[gilesmiller.com](http://gilesmiller.com)

Surface  
Architecture  
Sculpture